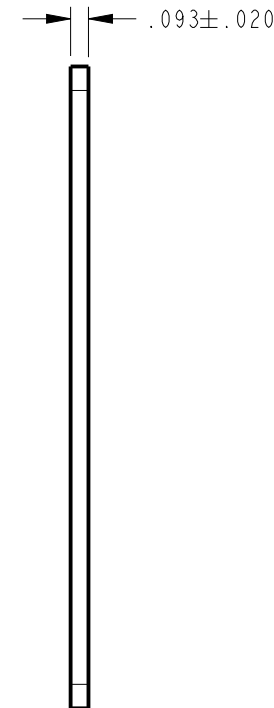
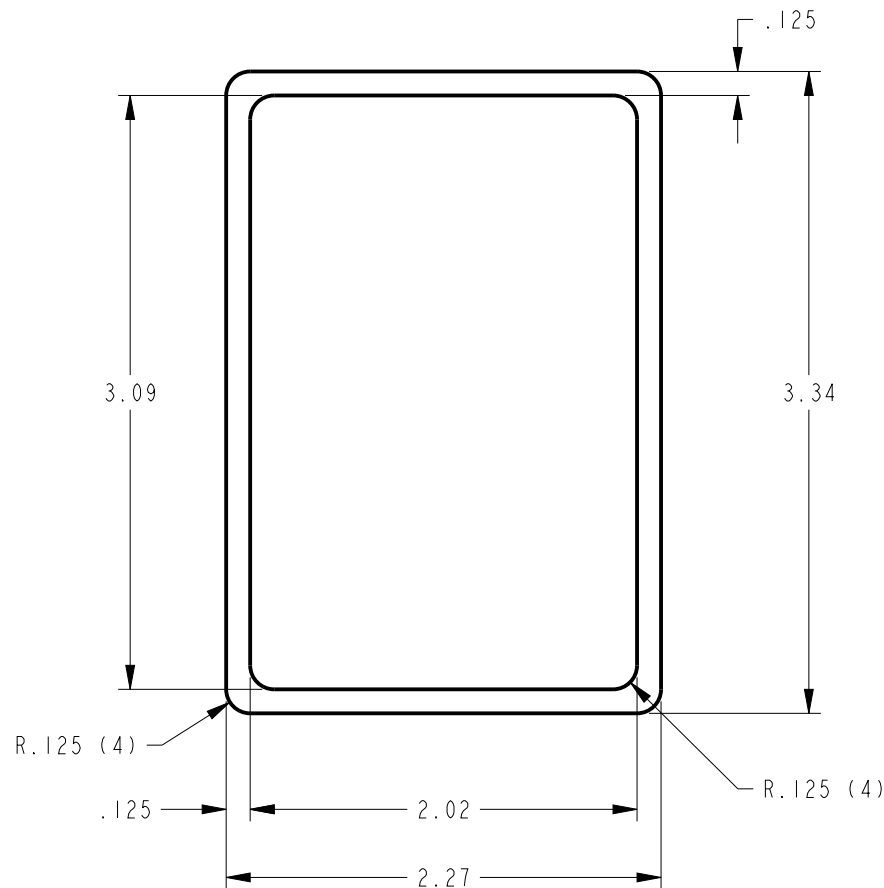


NOTES:

1. CHANGE OF MATERIAL IS NOT PERMITTED UNLESS APPROVED IN WRITING BY FETCO PERSONNEL.
2. DRAWING TO BE INTERPRETED IN ACCORDANCE WITH THE CURRENT REVISION OF ASME Y14.5M.
3. TSI TO BE INTERPRETED AS THEORETICAL SHARP INTERSECTION.
4. PARTS SHALL BE PACKAGE IN A MANNER TO PREVENT SCRATCHING, BOWING OR OTHER DAMAGE DURING SHIPMENT.



SCALE 0.250



REVISIONS

REV	DATE	ECO NO	DESCRIPTION	BY:	B
A	11/15/2011	N/A	ORIGINAL	DK	
B	07/18/2012	N/A	VENDOR AND MATERIAL CHANGE	AG	

TOLERANCES		FETCO [®] FOOD EQUIPMENT TECHNOLOGIES COMPANY 600 ROSE ROAD, LAKE ZURICH, IL 60047. USA PHONE: (800) 338-2699 FAX: (847) 719-3001 E-MAIL: engineering@fetco.com www.fetco.com	
UNLESS OTHERWISE SPECIFIED		DRAWING NAME: GASKET, TOUCH DISPLAY	
ALL DIMENSIONS IN INCHES		CREATED BY: DK	DATE 11/15/2011
ALL DECIMAL $\pm .005$ " ANGULAR $\pm 1/2^\circ$		DRAWING BY: DK	SCALE 1.000
THIRD-ANGLE		APP'D BY: LMW	SHEETS 1 of 1
MATERIAL BLACK CLOSED CELL NEOPRENE/EPDM/SBR, SCE42B		GAUGE N/A	DRAWING NO 1024.00046.00
		FINISH N/A	REVISION B

PROPRIETARY AND CONFIDENTIAL.
 THE INFORMATION CONTAINED IN THIS DRAWING IS THE SOLE PROPERTY OF FETCO.
 ANY REPRODUCTION IN PART OR AS A WHOLE WITHOUT THE WRITTEN PERMISSION OF FETCO IS PROHIBITED.