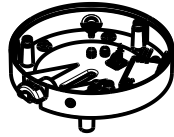
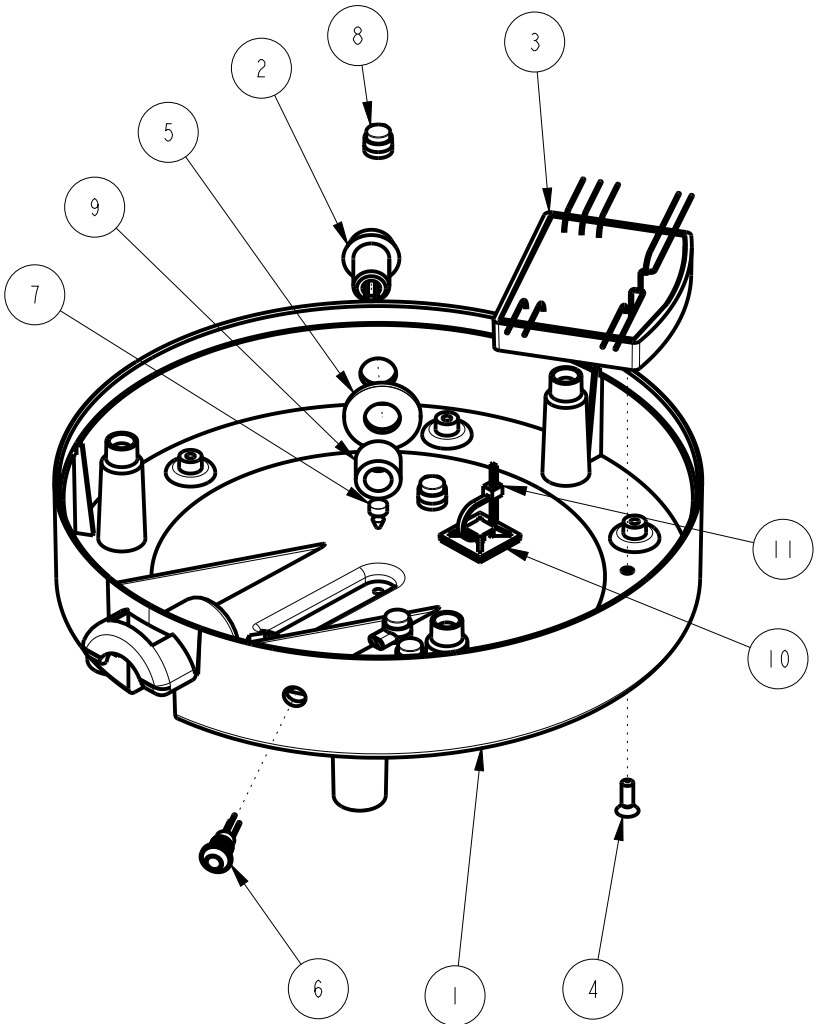


NOTES:

1. DRAWING TO BE INTERPRETED IN ACCORDANCE WITH THE CURRENT REVISION OF ASME Y14.5M.
2. TSI TO BE INTERPRETED AS THEORETICAL SHARP INTERSECTION.
3. PARTS SHALL BE FREE OF ALL CONTAMINANTS, INCLUDING GREASE, DIRT, MACHINING OIL AND OTHER CONTAMINANTS.
4. PARTS SHALL BE PACKAGE IN A MANNER TO PREVENT SCRATCHING, BOWING OR OTHER DAMAGE DURING SHIPMENT

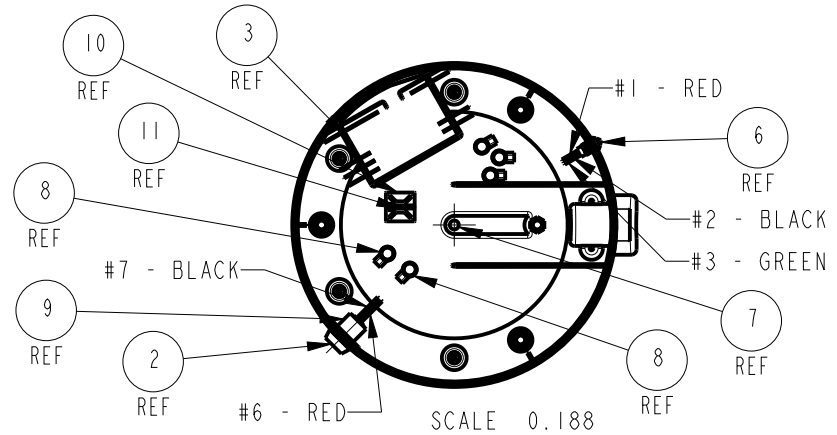


SCALE 0.094



REVISIONS

| REV | DATE | ECO NO | DESCRIPTION | BY: | C |
|-----|------------|--------|---|-----------|---|
| A | 10/22/2014 | N/A | ORIGINAL | E.FORONDA | |
| B | 01/13/2015 | N/A | REVISED DRAWING PER PART CHANGES; ADDED ITEM 7, 8 & 9 | E.FORONDA | |
| C | 05/18/2015 | N/A | ITEM 4 WAS 1082.00083.00; ADDED ITEM 10 & 11 | E.FORONDA | |



| (C) | 11 | 1 | 1066.00002.00 | TIE, 6" LONG, CABLE, NATURAL |
|---------|-----|---------|---------------|---|
| | 10 | 1 | 1029.00005.00 | MOUNT, .75' X .75" ADHESIVE, TIE |
| | 9 | 1 | 1025.00103.00 | TUBE, 5/8"OD X 3/8"ID X 1/2" LG. |
| | 8 | 5 | 1064.00023.00 | BUTTON CONNECTOR, 19-26 AWG |
| | 7 | 1 | 1024.00075.00 | SILICONE, BOTTOM PLUG |
| | 6 | 1 | 1058.00026.00 | LED, TRI COLOR, INDICATOR LAMP |
| | 5 | 1 | 1024.00073.00 | RUBBER WASHER, 1/2" X 1 1/16" X .094 THK. |
| (C) | 4 | 2 | 1082.00045.00 | SCREW, # 8-18x1/2"LG, FL HD PH, T/F, Z/P |
| | 3 | 1 | 1102.00270.00 | ASSY, CONTROL BOARD, HEATED DISPENSER |
| | 2 | 1 | 1102.00267.00 | ASSEMBLY, POWER SOCKET HEATED CONTAINER |
| | 1 | 1 | 1021.00021.00 | BOTTOM DRILLED, 1.5 GAL. HEATED DISPENSER |
| ITEM NO | QTY | PART NO | | DESCRIPTION |

BILL OF MATERIALS

| | | | |
|---------------------------------------|--|--|------------------------------------|
| TOLERANCES UNLESS OTHERWISE SPECIFIED | | FETCO FOOD EQUIPMENT TECHNOLOGIES COMPANY 600 ROSE ROAD, LAKE ZURICH, IL 60047. USA PHONE: (800) 338-2699 (847) 719-3002 E-MAIL: engineering@fetco.com www.fetco.com | |
| ALL DIMENSIONS IN INCHES | | DRAWING NAME: ASSY. BOTTOM GREY, 15 GAL., HEATED DISPENSER | |
| ALL DECIMAL ± .005" ANGULAR ± 1/2° | | CREATED BY: E.FORONDA | DATE 10/22/2014 |
| THIRD-ANGLE | | DRAWING BY: E.FORONDA | SCALE 0.375 |
| MATERIAL N/A | | APP'D BY: AG | DRAWING NO 1102.00277.00 |
| GAUGE N/A | | SHEETS 1 of 1 | REVISION C |
| FINISH N/A | | | |