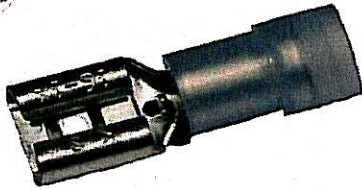




Catalog Number	11924
UPC Number	60198611924
Description	Nylon Insulated Female Disconnect Connectors 16-14 AWG



Features

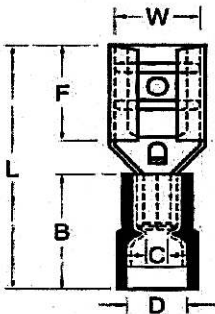
- Nylon Color Coded insulation for easy identification
- Manufactured from high strength copper alloy
- Electro-tin plated for corrosion resistance
- Expanded insulation eliminates strand "Hang Up", provides strain relief & excellent UV, temperature and chemical resistance
- Wire range stamped on the surface for easy interpretation
- Brazed seams prevent splitting under maximum pressure
- Serrated barrel provides excellent electrical contact & pull-out force resistance

General

Insulation Type	Nylon
Material	Brass
Finish	Electro-Tin Plated
Color	Blue
Wire Range	16-14
Tab Size	.032 X .250

Dimension Information

Stock Thickness	0.016
L Inches (mm)	0.846
B Inches (mm)	0.433
C Inches (mm)	0.091
D Inches (mm)	0.197
F Inches (mm)	0.287
W Inches (mm)	0.26



Specifications

Temperature Rating	105°C
Voltage Rating	300 V
Flammability Rating	UL94V-O
Amp Rating	14 AWG 30 Amps 16 AWG 18 Amps

Packaging

Bag Qty	100
Master Bag Qty	1000

Certifications

UL	Yes
cUL	Yes
RoHS	Yes

Morris Products 53 Carey Road, Queensbury, NY 12804

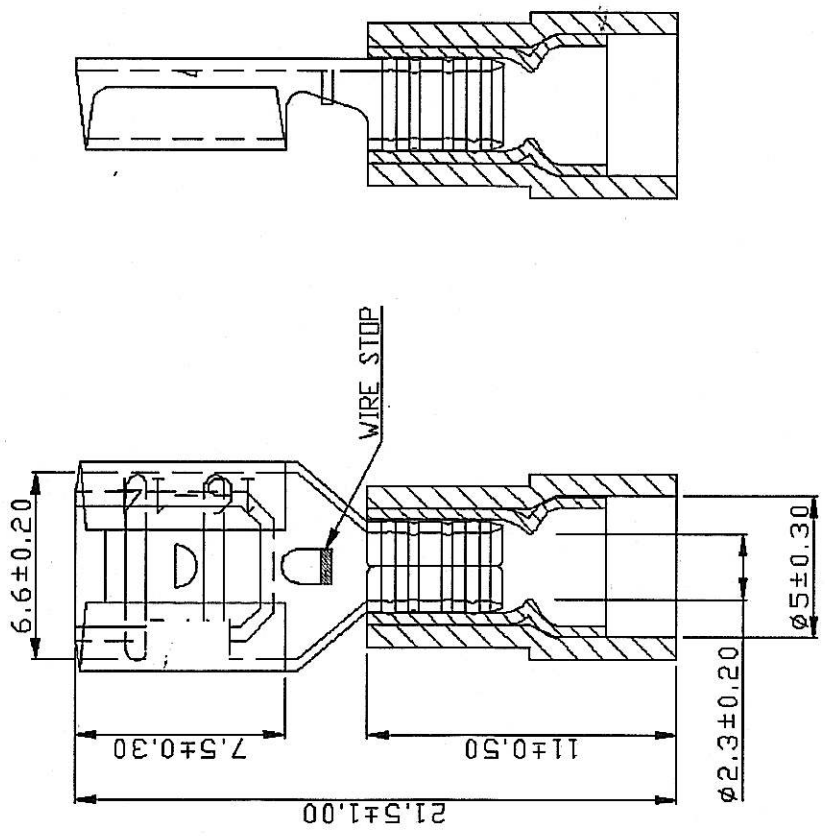
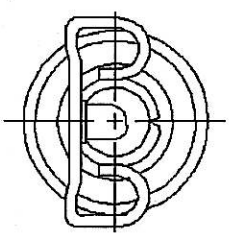
www.morrisproducts.com

A B C D E F G H DATE

REV DESCRIPTION

1 2 3 4 5 6

X



- NOTE:
1. MAXIMUM ELECTRIC CURRENT :

A.W.G.	16	14
AMP.	10	15
 2. MAXIMUM ELECTRICAL RATING : 105°C 600 VOLTS MAX.
 3. INSULATION MATERIAL : NYLON
 4. INSULATION COLOR : BLUE
 5. TERMINAL MATERIAL : BRASS
 6. WIRE RANGE : 16-14 A.W.G.(1.5-2.5 mm²)
 7. TERMINALS SURFACE TREATMENT : TIN PLATED
 8. DOUBLE CRIMP : WITH COPPER SLEEVE ON BARREL
 9. NEMA TAB : 0.032 * 0.250 (0.8 * 6.35)
 10. TERMINALS THICKNESS : 0.40 mm

Tolerance Unless	UNIT	mm
Otherwise Specified		
0 > 6 mm ±0.20	ANGLE	
6 > 18 mm ±0.30	° REF ±	
18 > 30 mm ±0.40	°	±
30 > 75 mm ±0.50	°	±

NAME	NYLON-INSULATED DOUBLE CRIMP FEMALE DISCONNECTORS	UNIT	mm
PART NO.	11924	MATERIAL	-----
NUMBER		SCALE	SHEET PAGE CHECKED
DATE	2006/08/14	4/1	1-0 10F2 DRAWN

Morris Products Inc.

A B C D E F G H DATE

X