

NOTES:

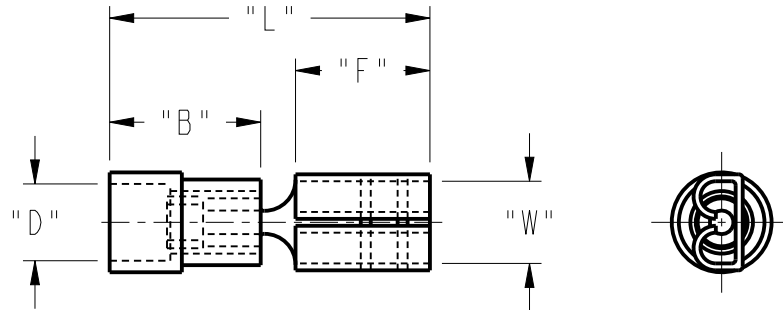
- CHANGE OF MATERIAL IS NOT PERMITTED UNLESS APPROVED IN WRITING BY FETCO PERSONNEL.
- DRAWING TO BE INTERPRETED IN ACCORDANCE WITH THE CURRENT REVISION OF ASME Y14.5M.
- TSI TO BE INTERPRETED AS THEORETICAL SHARP INTERSECTION.
- PARTS SHALL BE FREE OF ALL CONTAMINANTS INCLUDING GREASE, DIRT, MACHINING OIL AND OTHER CONTAMINANTS.
- PARTS SHALL BE PACKAGED IN A MANNER TO PREVENT SCRATCHING, BOWING OR OTHER DAMAGE DURING SHIPMENT.
- PURCHASED FROM: SEE DATA TABLE



SCALE 1.000

REVISIONS

REV	DATE	ECO NO	DESCRIPTION	BY:	A
A	12/07/2015	N/A	ORIGINAL	DK	



SPECIFICATIONS:

GENERAL:

INSULATION TYPE: NYLON
 MATERIAL: BRASS
 FINISH: ELECTRO-TIN PLATED
 COLOR: BLUE
 WIRE RANGE: 16-14
 TAB SIZE: .032 x .250
 TEMPERATURE RATING: 105°C
 VOLTAGE RATING: 300V
 FLAMMABILITY RATING: UL94V-0
 AMP RATING: 14 AWG, 30 AMPS
 16 AWG, 18 AMPS
 CERTIFICATIONS: UL, cUL, RoHS

D A T A T A B L E

FETCO PART NO.	VENDOR	VENDOR PART NO.	DIMENSIONS					STOCK THICKNESS
			"B"	"D"	"F"	"L"	W	
1064.00028.00	MORRIS	11924	.433	.197	.287	.846	.26	.016

PROPRIETARY AND CONFIDENTIAL.
 THE INFORMATION CONTAINED IN THIS DRAWING IS THE SOLE PROPERTY OF FETCO.
 ANY REPRODUCTION IN PART OR AS A WHOLE WITHOUT THE WRITTEN PERMISSION OF FETCO IS PROHIBITED.

TOLERANCES		FOOD EQUIPMENT TECHNOLOGIES COMPANY 600 ROSE ROAD, LAKE ZURICH, IL 60047, USA PHONE: (800) 338-2699 FAX: (847) 719-3001 E-MAIL: engineering@fetco.com www.fetco.com	
UNLESS OTHERWISE SPECIFIED	DRAWING NAME: TERMINAL, FEM, DOUBLE CRIMP, .250" x .032", 16-14 AWG.		
ALL DIMENSIONS IN INCHES	CREATED BY: DK	DATE 12/07/2015	DRAWING NO 1064.00028.00
ALL DECIMAL ± .005" ANGULAR ± 1/2°	DRAWING BY: E. FORONDA	SCALE 2.000	REVISION A
THIRD-ANGLE	APP'D BY: AG	SHEETS 1 of 1	
MATERIAL PURCHASED	GAUGE N/A	FINISH N/A	