

NOTES:

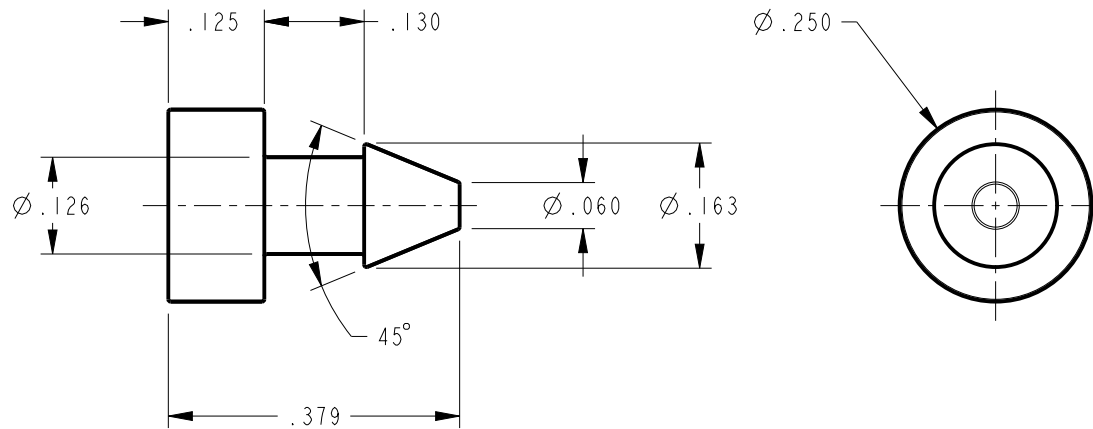
1. CHANGE OF MATERIAL IS NOT PERMITTED UNLESS APPROVED IN WRITING BY FETCO PERSONNEL.
2. DRAWING TO BE INTERPRETED IN ACCORDANCE WITH THE CURRENT REVISION OF ASME Y14.5M.
3. TSI TO BE INTERPRETED AS THEORETICAL SHARP INTERSECTION.
4. PARTS SHALL BE PACKAGE IN A MANNER TO PREVENT SCRATCHING, BOWING OR OTHER DAMAGE DURING SHIPMENT.
5. MATERIAL: SILICONE, BLACK
SHORE A, 50 DUROMETER



SCALE 2.000

REVISIONS

REV	DATE	ECO NO	DESCRIPTION	BY:	A
A	01/14/2015	N/A	ORIGINAL	MK	



PROPRIETARY AND CONFIDENTIAL.
THE INFORMATION CONTAINED IN THIS DRAWING IS THE SOLE PROPERTY OF FETCO.
ANY REPRODUCTION IN PART OR AS A WHOLE WITHOUT THE WRITTEN PERMISSION OF FETCO IS PROHIBITED.

TOLERANCES UNLESS OTHERWISE SPECIFIED		FETCO [®] FOOD EQUIPMENT TECHNOLOGIES COMPANY 600 ROSE ROAD, LAKE ZURICH, IL 60047, USA PHONE: (800) 338-2699 FAX: (847) 719-3001 E-MAIL: engineering@fetco.com www.fetco.com	
ALL DIMENSIONS IN INCHES		DRAWING NAME: SILICONE, BOTTOM PLUG	
ALL DECIMAL ± .005" ANGULAR ± 1/2°	THIRD-ANGLE	CREATED BY: MK	DATE 01/14/2015
		DRAWING BY: E. FORONDA	SCALE 4.000
		APP'D BY: AG	SHEETS 1 of 1
MATERIAL SEE NOTE 5		GAUGE N/A	DRAWING NO 1024.00075.00
		FINISH N/A	REVISION A