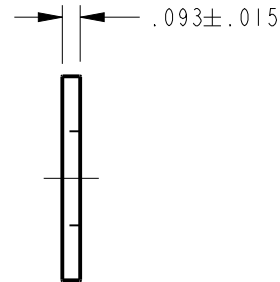
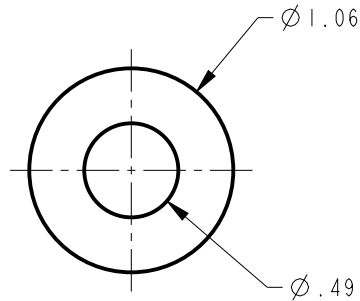


NOTES:

1. CHANGE OF MATERIAL IS NOT PERMITTED UNLESS APPROVED IN WRITING BY FETCO PERSONNEL.
2. DRAWING TO BE INTERPRETED IN ACCORDANCE WITH THE CURRENT REVISION OF ASME Y14.5M.
3. TSI TO BE INTERPRETED AS THEORETICAL SHARP INTERSECTION. SCALE 0.500
4. PARTS SHALL BE PACKAGE IN A MANNER TO PREVENT BOWING, SCRATCHING, OR OTHER DAMAGE DURING SHIPMENT
5. PARTS SHALL BE FREE OF ALL CONTAMINANTS INCLUDING GREASE, DIRT, MACHINING OIL AND OTHER CONTAMINANTS.
6. PURCHASED FROM: McMASTER-CARR  
 VENDOR P/N: 90133A053  
 MATERIAL: NEOPRENE RUBBER  
 HARDNESS: 55A-65A  
 TEMP. RANGE: -30° TO +220°F



SCALE 0.500



REVISIONS

REV	DATE	ECO NO	DESCRIPTION	BY:	A
A	10/15/2014	N/A	ORIGINAL	E.FORONDA	

PROPRIETARY AND CONFIDENTIAL.  
 THE INFORMATION CONTAINED IN THIS DRAWING IS THE SOLE PROPERTY OF FETCO.  
 ANY REPRODUCTION IN PART OR AS A WHOLE WITHOUT THE WRITTEN PERMISSION OF FETCO IS PROHIBITED.

TOLERANCES UNLESS OTHERWISE SPECIFIED		<b>FETCO</b> <sup>®</sup>		FOOD EQUIPMENT TECHNOLOGIES COMPANY 600 ROSE ROAD, LAKE ZURICH, IL 60047, USA PHONE: (800) 338-2699 FAX: (847) 719-3001 E-MAIL: <a href="mailto:engineering@fetco.com">engineering@fetco.com</a> <a href="http://www.fetco.com">www.fetco.com</a>	
ALL DIMENSIONS IN INCHES		DRAWING NAME: <b>WASHER, RUBBER, (1/2" x 1 1/16" x .094 THK.)</b>			
ALL DECIMAL ± .005" ANGULAR ± 1/2°		CREATED BY: E.FORONDA	DATE 10/15/2014	DRAWING NO <b>1024.00073.00</b>	
THIRD-ANGLE 		DRAWING BY: E.FORONDA	SCALE 1.000	REVISION <b>A</b>	
		APP'D BY: AG	SHEETS 1 of 1		
MATERIAL PURCHASED			GAUGE N/A	FINISH N/A	