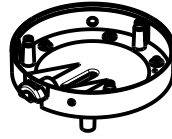


NOTES:

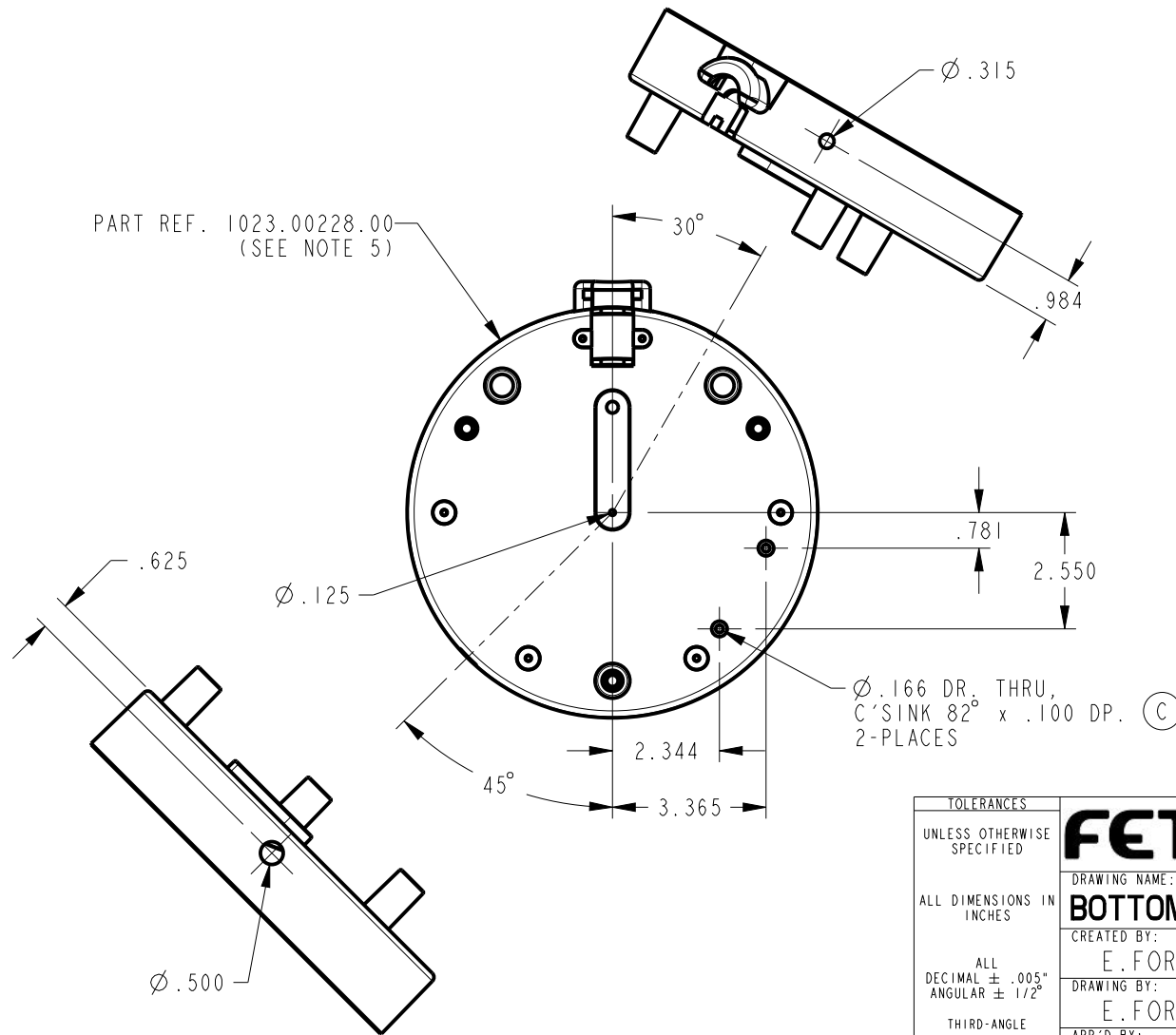
1. DRAWING TO BE INTERPRETED IN ACCORDANCE WITH THE CURRENT REVISION OF ASME Y14.5M.
2. TSI TO BE INTERPRETED AS THEORETICAL SHARP INTERSECTION.
3. PARTS SHALL BE FREE OF ALL CONTAMINANTS, INCLUDING GREASE, DIRT, MACHINING OIL AND OTHER CONTAMINANTS.
4. PARTS SHALL BE PACKAGE IN A MANNER TO PREVENT BOWING, SCRATCHING, OR OTHER DAMAGE DURING SHIPMENT
5. REWORK PART # 1023.00228.00 TO DRILL HOLES AFTER PART MOLD. USE FIXTURE PART #1011.00035.00 FOR DRILLING



SCALE 0.094

REVISIONS

REV	DATE	ECO NO	DESCRIPTION	BY:	C
A	10/15/2014	N/A	ORIGINAL	E.FORONDA	
B	01/12/2015	N/A	LED MTG. HOLES MOVED TO OPP. SIDE, Ø.125 HOLE WAS Ø.500	E.FORONDA	
C	05/18/2015	N/A	ADDED (2) C'SINK HOLES	E.FORONDA	



TOLERANCES		FETCO FOOD EQUIPMENT TECHNOLOGIES COMPANY 600 ROSE ROAD, LAKE ZURICH, IL 60047. USA PHONE: (800) 338-2699 (847) 719-3002 E-MAIL: engineering@fetco.com www.fetco.com	
UNLESS OTHERWISE SPECIFIED		DRAWING NAME:	
ALL DIMENSIONS IN INCHES		BOTTOM DRILLED, 15 GAL. HEATED DISPENSER	
ALL DECIMAL ± .005" ANGULAR ± 1/2°		CREATED BY:	DATE
THIRD-ANGLE		E.FORONDA	10/15/2014
		DRAWING BY:	DRAWING NO
MATERIAL		E.FORONDA	1021.00021.00
1023.00228.00		APP'D BY:	SCALE
GAUGE		AG	0.250
FINISH		SHEETS	REVISION
N/A		1 of 1	C
N/A			

PROPRIETARY AND CONFIDENTIAL.
 THE INFORMATION CONTAINED IN THIS DRAWING IS THE SOLE PROPERTY OF FETCO.
 ANY REPRODUCTION IN PART OR AS A WHOLE WITHOUT THE WRITTEN PERMISSION OF FETCO IS PROHIBITED.