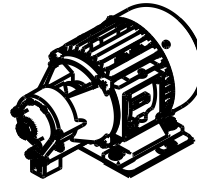
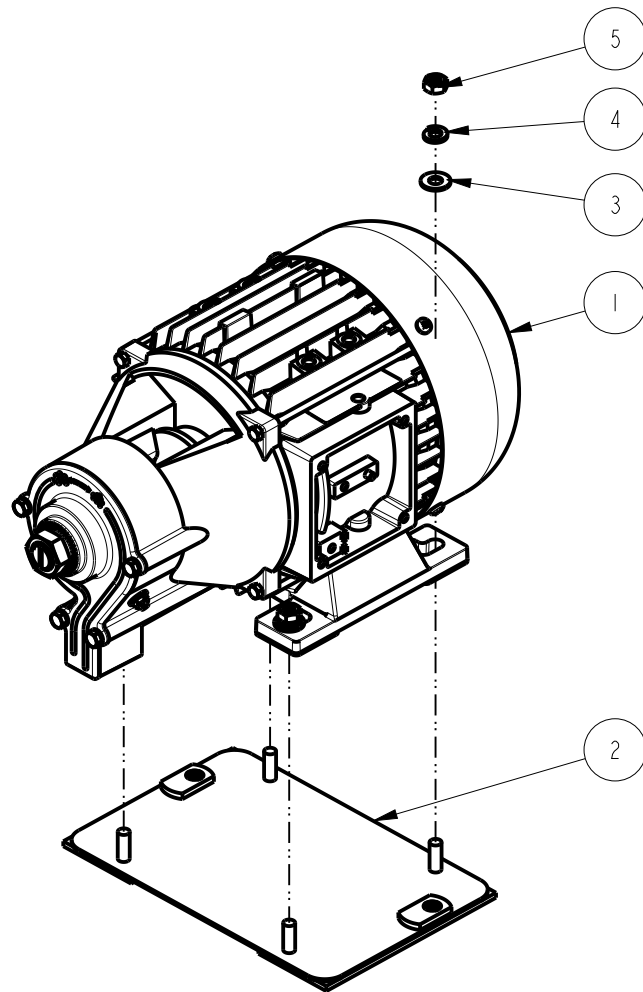


NOTES:

1. DRAWING TO BE INTERPRETED IN ACCORDANCE WITH THE CURRENT REVISION OF ASME Y14.5M.
2. TSI TO BE INTERPRETED AS THEORETICAL SHARP INTERSECTION
3. PARTS SHALL BE FREE OF ALL CONTAMINANTS INCLUDING GREASE, DIRT, MACHINING OIL AND OTHER CONTAMINANTS.
4. PARTS SHALL BE PACKAGED IN A MANNER TO PREVENT SCRATCHING, BOWING OR OTHER DAMAGE DURING SHIPMENT.



SCALE 0.094



REVISIONS

REV	DATE	ECO NO	DESCRIPTION	BY:	B
A	01/05/2012	N/A	ORIGINAL	AG	
B	08/28/2014	N/A	UPDATE TO STANDARD	E.FORONDA	

ITEM NO	QTY	PART NO	DESCRIPTION
5	4	1084.00017.00	NUT, HEX, 1/4"-20
4	4	1083.00021.00	WASHER, 1/4" SCREW SIZE, SPRING LOCK
3	4	1083.00023.00	WASHER, 1/4" SCREW SIZE, FLAT
2	1	1102.00035.00	PLATE ASSEMBLY, GRINDER MOTOR
1	1	1102.00184.00	COMPLETE GRINDING MOTOR ASSY, 230VAC/50Hz

BILL OF MATERIALS

TOLERANCES		FETCO FOOD EQUIPMENT TECHNOLOGIES COMPANY 600 ROSE ROAD, LAKE ZURICH, IL 60047. USA PHONE: (800) 338-2699 (847) 719-3002 E-MAIL: engineering@fetco.com www.fetco.com	
UNLESS OTHERWISE SPECIFIED		DRAWING NAME: GRINDING MOTOR AND PLATE ASSY, 230V/50Hz	
ALL DIMENSIONS IN INCHES		CREATED BY: AG	DATE 01/05/2012
ALL DECIMAL ± .005" ANGULAR ± 1/2°		DRAWING BY: AG	SCALE 0.250
THIRD-ANGLE		APP'D BY: AS	SHEETS 1 of 1
MATERIAL N/A		DRAWING NO 1102.00185.00	
		REVISION B	
		GAUGE N/A	FINISH N/A

PROPRIETARY AND CONFIDENTIAL.
 THE INFORMATION CONTAINED IN THIS DRAWING IS THE SOLE PROPERTY OF FETCO.
 ANY REPRODUCTION IN PART OR AS A WHOLE WITHOUT THE WRITTEN PERMISSION OF FETCO IS PROHIBITED.