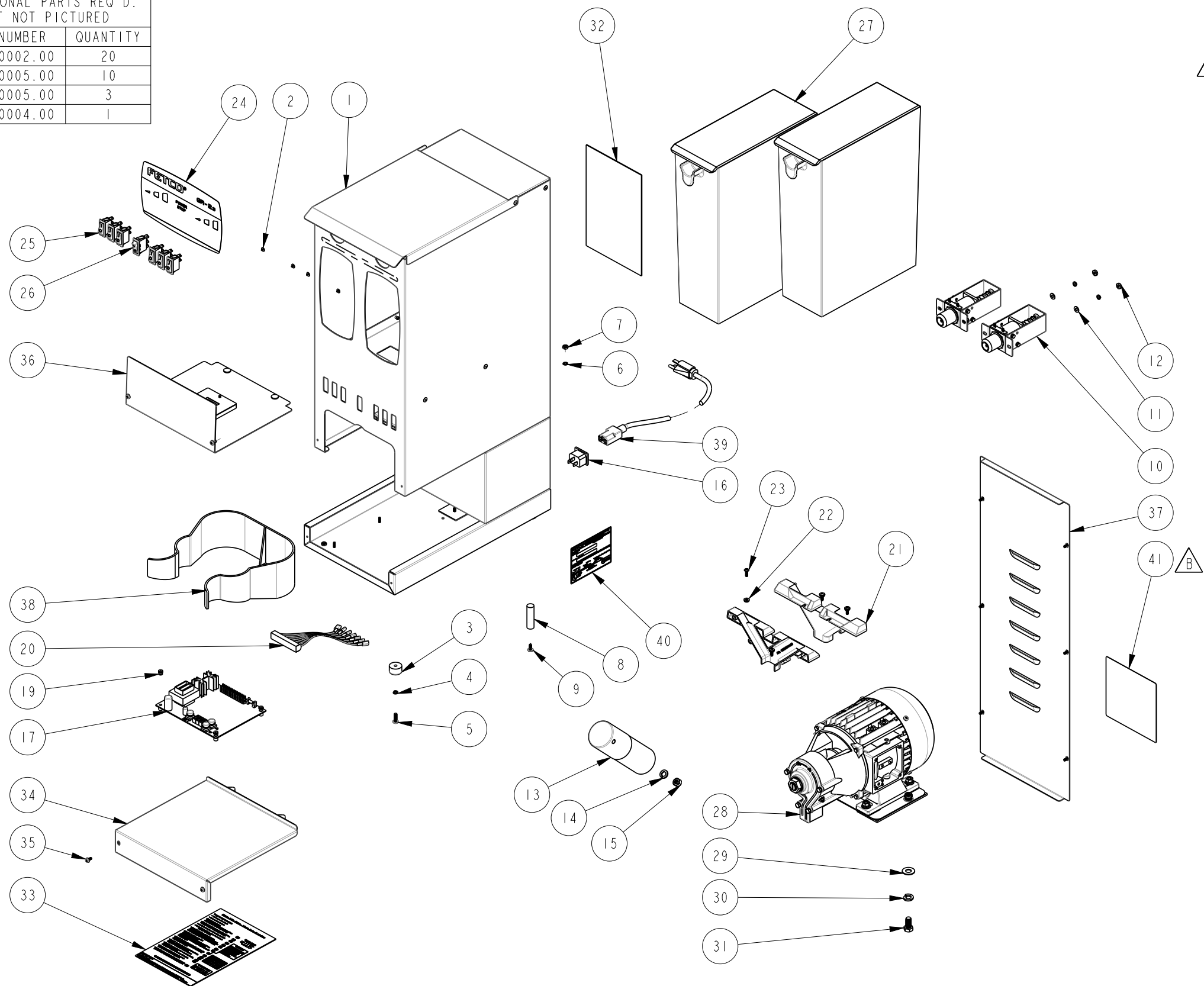


NOTES:

1. DRAWING TO BE INTERPRETED IN ACCORDANCE WITH THE CURRENT REVISION OF ASME Y14.5M.
2. TSI TO BE INTERPRETED AS THEORETICAL SHARP INTERSECTION
3. PARTS SHALL BE FREE OF ALL CONTAMINANTS INCLUDING GREASE, DIRT, MACHINING OIL AND OTHER CONTAMINANTS.
4. PARTS SHALL BE PACKAGED IN A MANNER TO PREVENT SCRATCHING, BOWING OR OTHER DAMAGE DURING SHIPMENT.

| ADDITIONAL PARTS REQ'D. BUT NOT PICTURED | |
|--|----------|
| PART NUMBER | QUANTITY |
| 1066.00002.00 | 20 |
| 1029.00005.00 | 10 |
| 1064.00005.00 | 3 |
| 1064.00004.00 | 1 |



| REVISIONS | | | | |
|-----------|------------|--------|---|-----------|
| REV | DATE | ECO NO | DESCRIPTION | BY: |
| A | 09/19/2015 | N/A | ORIGINAL | DK |
| B | 3/22/2017 | N/A | ADDED ITEM 41, WARNING LABEL ITEM 40 WAS 1042.00004.00 | E.FORONDA |

△ B

| ITEM NO | QTY | PART NO | DESCRIPTION |
|---------|-----|---------------|--|
| 41 | 1 | 1046.00035.00 | LABEL, WARNING "TO REDUCE RISK OF ELECTRIC SHOCK OR FIRE" |
| 40 | 1 | 1043.00036.00 | TEMPLATE, SN LABEL, FETCO PRODUCTS |
| 39 | 1 | 1063.00003.00 | CORD, POWER, AMERICAN, 120VAC, 13A, 6FT LG. |
| 38 | 1 | 1023.00041.00 | HOLDER, BREW BASKET, GR-1/2 |
| 37 | 1 | 1001.00035.00 | COVER, REAR, GR-2 |
| 36 | 1 | 1102.00023.00 | COVER, GRINDER SERVICE ASSEMBLY, W/O RAILS |
| 35 | 10 | 1082.00033.00 | SCREW, PAN HD PHIL. MACH., W/DUAL ACT WASHER, #6-32x3/8LG. |
| 34 | 1 | 1112.00023.00 | BASE COVER WELDMENT, GR/GRF |
| 33 | 1 | 1046.00009.00 | LABEL "GR PROGRAMMING" |
| 32 | 1 | 1401.00007.00 | WIRING DIAGRAM, UNIVERSAL, GR-2 |
| 31 | 2 | 1082.00032.00 | SCREW, 3/8"-16 X 3/4" LG, HEX HEAD CAP |
| 30 | 2 | 1083.00020.00 | WASHER, 3/8" SCREW SIZE, SPRING LOCK |
| 29 | 2 | 1083.00022.00 | WASHER, 3/8" SCREW SIZE, FLAT |
| 28 | 1 | 1102.00038.00 | GRINDING MOTOR AND PLATE ASSY, 120V/60Hz |
| 27 | 2 | 1102.00033.00 | HOPPER, ASSEMBLY, GRF-2.3 |
| 26 | 1 | 1058.00006.00 | SWITCH, POWER ROCKER RED, ILLUMINATED 120V |
| 25 | 6 | 1058.00007.00 | SWITCH, START ROCKER, MOMENTARY, 250VAC |
| 24 | 1 | 1045.00007.00 | OVERLAY, GR-2.3 |
| 23 | 4 | 1082.00017.00 | SCREW, TRUSS HD. PHIL. MACHINE, # 6-32 X 1/2 LG. |
| 22 | 4 | 1083.00010.00 | WASHER, #10 SCREW W/NEOPRENE-BONDED SEAL |
| 21 | 2 | 1023.00044.00 | MANIFOLD, GR-2 |
| 20 | 1 | 1402.00010.00 | ELECTRICAL HARNESS, GR 2.3 |
| 19 | 4 | 1029.00006.00 | NUT, FINGER, #4-40 NYLON |
| 18 | 1 | 1050.00003.00 | SOFTWARE, GRINDERS, V 1.2 |
| 17 | 1 | 1108.00028.00 | ASSY, BOARD CONTROL AND SOFTWARE, GR-1/2 100-120VAC |
| 16 | 1 | 1065.00003.00 | CONNECTOR, POWER INLET, 15A, 250VAC |
| 15 | 1 | 1084.00018.00 | NUT, HEX, M8 SCREW SIZE |
| 14 | 1 | 1083.00025.00 | WASHER, M8 SCREW SIZE, SPRING LOCK |
| 13 | 1 | 1067.00005.00 | CAPACITOR, 120VAC VER. 80uF, 450VAC, 50-60Hz |
| 12 | 4 | 1084.00014.00 | NUT, HEX, #10-32, MACHINE SCREW |
| 11 | 4 | 1083.00026.00 | WASHER, #10 SCREW SIZE, FLAT |
| 10 | 2 | 1102.00305.00 | SOLENOID ASSEMBLY, 100VAC, GR-2 |
| 9 | 1 | 1082.00018.00 | SCREW, TRUSS HD. PHIL. SM, #8 X 1/2 LG. |
| 8 | 1 | 1021.00005.00 | ROD, VIBRATION DAMPENING, GR-2 |
| 7 | 1 | 1084.00006.00 | NUT, 8-32 18-8 HEX MACHINE SCREW |
| 6 | 1 | 1083.00011.00 | WASHER, #8 SCREW SIZE, INTERNAL TOOTH LOCK |
| 5 | 4 | 1082.00031.00 | SCREW, #10-32 X 5/8", PAN HD PHIL, MACHINE |
| 4 | 8 | 1083.00019.00 | WASHER, #10 SCREW SIZE, SPRING LOCK |
| 3 | 4 | 1073.00006.00 | FOOT, GRINDER |
| 2 | 4 | 1029.00009.00 | FASTENER, 9/32" HEAD DIA X .165" LG, PUSH IN |
| 1 | 1 | 1111.00011.00 | BODY, WELDMENT, GR-2 |

BILL OF MATERIALS

TOLERANCES
UNLESS OTHERWISE SPECIFIED

ALL DIMENSIONS IN INCHES

ALL DECIMAL ± .005"
ANGULAR ± 1/2°

THIRD-ANGLE

MATERIAL N/A

GAUGE N/A

FINISH N/A

FETCO FOOD EQUIPMENT TECHNOLOGIES COMPANY
600 ROSE ROAD, LAKE ZURICH, IL 60047, USA
PHONE: (800) 338-2699 FAX: (847) 719-3001
E-MAIL: engineering@fetco.com www.fetco.com

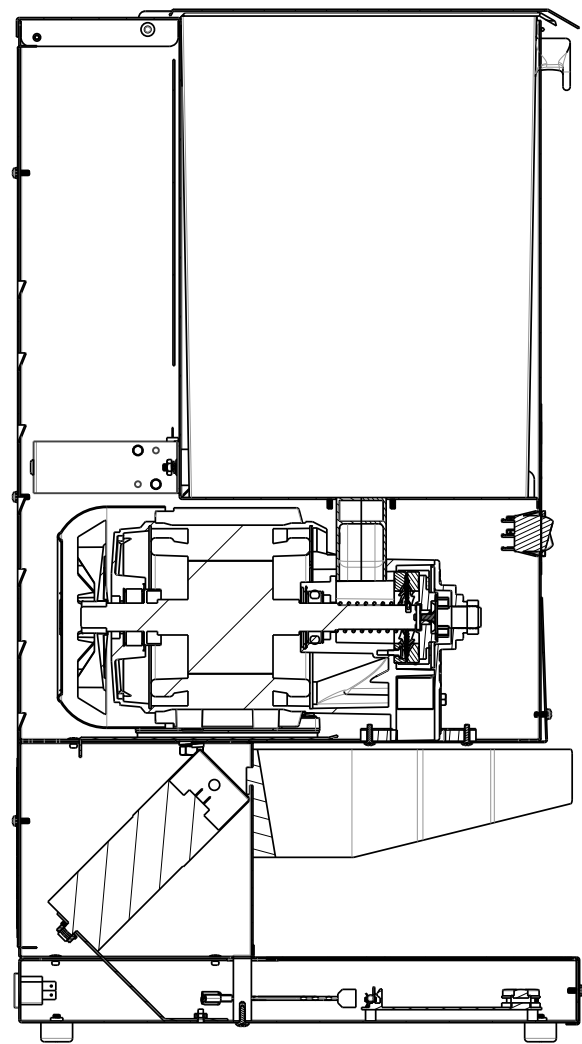
DRAWING NAME:
GRINDER ASSEMBLY, GR-2.3, 100VAC, JAPAN

CREATED BY: DK DATE: 09/19/2015 DRAWING NO.: 1101.00278.00

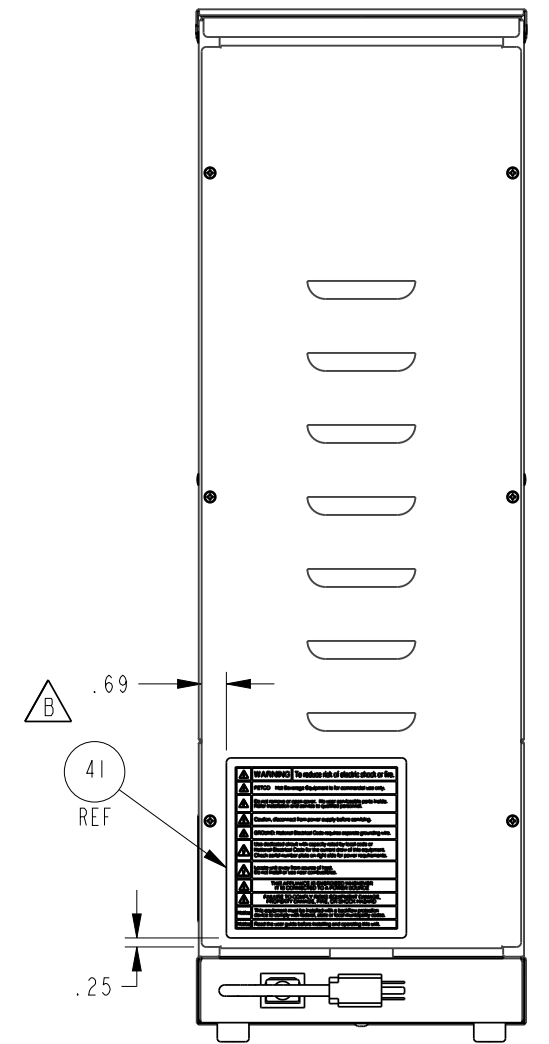
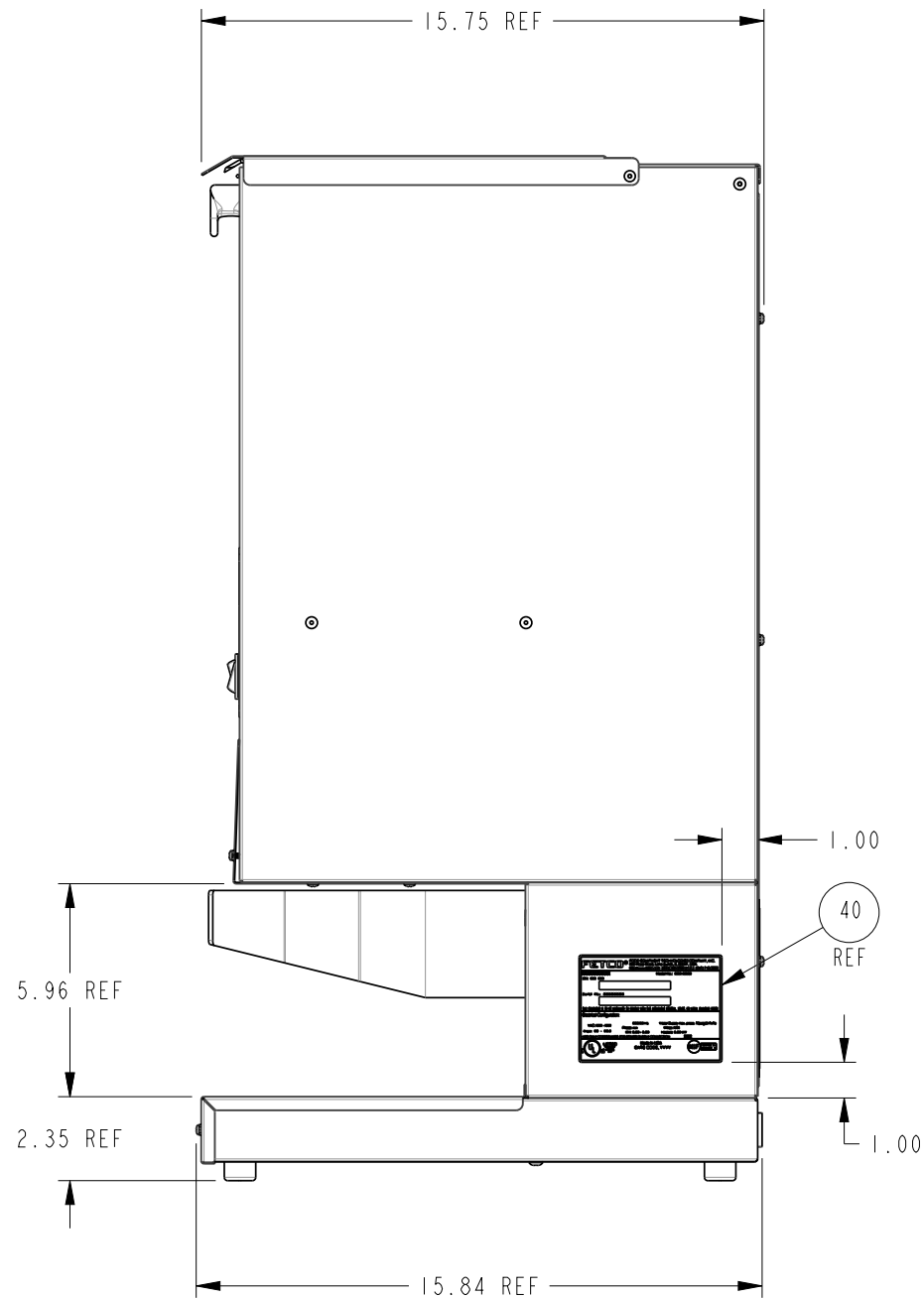
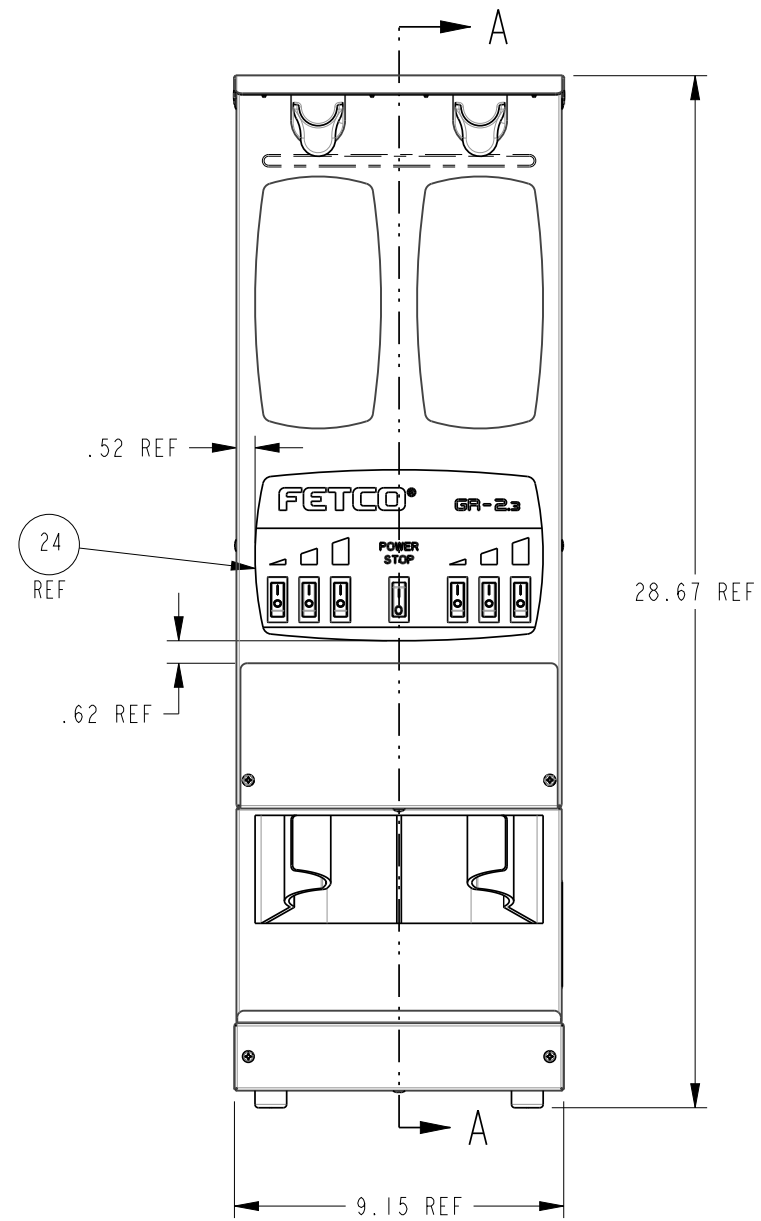
DRAWING BY: DK SCALE: 0.125

APP'D BY: AS SHEETS: 1 of 2 REVISION: B

PROPRIETARY AND CONFIDENTIAL.
THE INFORMATION CONTAINED IN THIS DRAWING IS THE SOLE PROPERTY OF FETCO.
ANY REPRODUCTION IN PART OR AS A WHOLE WITHOUT THE WRITTEN PERMISSION OF FETCO IS PROHIBITED.



SECTION A-A



PROPRIETARY AND CONFIDENTIAL.
 THE INFORMATION CONTAINED IN THIS DRAWING IS THE SOLE PROPERTY OF FETCO.
 ANY REPRODUCTION IN PART OR AS A WHOLE WITHOUT THE WRITTEN PERMISSION OF FETCO IS PROHIBITED.

| TOLERANCES | | |
|----------------------------|-------|--------|
| UNLESS OTHERWISE SPECIFIED | | |
| ALL DIMENSIONS IN INCHES | | |
| ALL DECIMAL ± .005" | | |
| ANGULAR ± 1/2° | | |
| THIRD-ANGLE | | |
| MATERIAL | GAUGE | FINISH |
| N/A | N/A | N/A |

| | | |
|---|------------------|----------------------------------|
| FETCO FOOD EQUIPMENT TECHNOLOGIES COMPANY 600 ROSE ROAD, LAKE ZURICH, IL 60047, USA PHONE: (800) 338-2699 FAX: (847) 719-3001 E-MAIL: engineering@fetco.com www.fetco.com | | |
| DRAWING NAME: GRINDER ASSEMBLY, GR-2.3, 100VAC, JAPAN | | |
| CREATED BY: DK | DATE: 09/19/2015 | DRAWING NO. 1101.00278.00 |
| DRAWING BY: E. FORONDA | SCALE: 0.188 | REVISION B |
| APP'D BY: AS | SHEETS: 2 of 2 | |