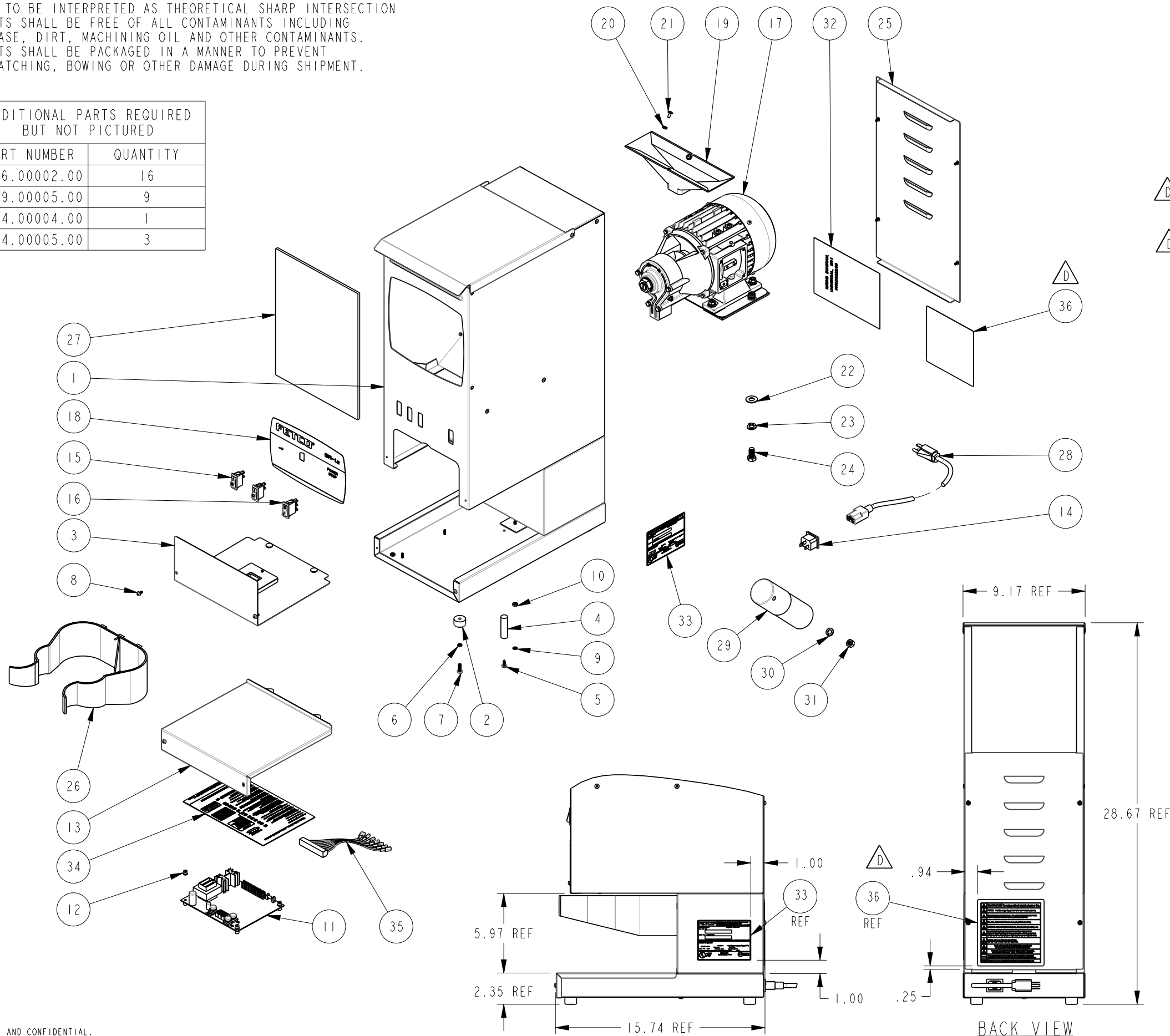


NOTES:

1. DRAWING TO BE INTERPRETED IN ACCORDANCE WITH THE CURRENT REVISION OF ASME Y14.5M.
2. TSI TO BE INTERPRETED AS THEORETICAL SHARP INTERSECTION
3. PARTS SHALL BE FREE OF ALL CONTAMINANTS INCLUDING GREASE, DIRT, MACHINING OIL AND OTHER CONTAMINANTS.
4. PARTS SHALL BE PACKAGED IN A MANNER TO PREVENT SCRATCHING, BOWING OR OTHER DAMAGE DURING SHIPMENT.

ADDITIONAL PARTS REQUIRED BUT NOT PICTURED

PART NUMBER	QUANTITY
1066.00002.00	16
1029.00005.00	9
1064.00004.00	1
1064.00005.00	3



REVISIONS

REV	DATE	ECO NO	DESCRIPTION	BY:	D
A	07/22/2011	N/A	ORIGINAL	SAK	
B	11/12/2013	N/A	UPDATE TO STANDARD	E.FORONDA	
C	08/13/2015	N/A	DRW UPDATED WITH CTR. BOARD INFO	DK	
D	3/20/2017	N/A	ADDED ITEM 36, WARNING LABEL ITEM 33 WAS 1042.00004.00	E.FORONDA	

△	36	1	1046.00035.00	LABEL, WARNING "TO REDUCE RISK OF ELECTRIC SHOCK OR FIRE"
	35	1	1402.00010.00	ELECTRICAL HARNESS, GR 2.3
	34	1	1046.00009.00	LABEL "GR PROGRAMMING"
△	33	1	1043.00036.00	TEMPLATE, SN LABEL, FETCO PRODUCTS
	32	1	1401.00022.00	WIRING DIAGRAM, UNIVERSAL, GR-1
	31	1	1084.00018.00	NUT, HEX, M8 SCREW SIZE
	30	1	1083.00025.00	WASHER, M8 SCREW SIZE, SPRING LOCK
	29	1	1067.00001.00	CAPACITOR, 120VAC VERSION, 40uF, 450VAC, 50-60Hz
	28	1	1063.00003.00	CORD, POWER, AMERICAN, 120VAC, 13A, 6FT LG.
	27	1	1028.00001.00	WINDOW, GR-1
	26	1	1023.00041.00	HOLDER, BREW BASKET, GR-1/2
	25	1	1001.00020.00	COVER, REAR, GR-1/GRF-2
	24	2	1082.00032.00	SCREW, 3/8"-16 X 3/4" LG, HEX HEAD CAP
	23	2	1083.00020.00	WASHER, 3/8" SCREW SIZE, SPRING LOCK
	22	2	1083.00022.00	WASHER, 3/8" SCREW SIZE, FLAT
	21	2	1082.00023.00	SCREW, #8-32 X 3/8 TRUSS HD PHIL., MACHINE
	20	2	1083.00010.00	WASHER, #10 SCREW W/NEOPRENE-BONDED SEAL
	19	1	1023.00148.00	FUNNEL, HOPPER, GR-1
	18	1	1045.00016.00	OVERLAY, GR-1.2
	17	1	1102.00038.00	GRINDING MOTOR AND PLATE ASSY, 120V/60Hz
	16	1	1058.00006.00	SWITCH, POWER ROCKER RED, ILLUMINATED 120V
	15	2	1058.00007.00	SWITCH, START ROCKER, MOMENTARY, 250VAC
	14	1	1065.00003.00	CONNECTOR, POWER INLET, 15A, 250VAC
	13	1	1112.00023.00	BASE COVER WELDMENT, GR/GRF
	12	4	1029.00006.00	NUT, FINGER, #4-40 NYLON
	11	1	1108.00028.00	ASSY, BOARD CONTROL AND SOFTWARE, GR-1/2 100-120VAC
	10	1	1084.00006.00	NUT, 8-32 18-8 HEX MACHINE SCREW
	9	1	1083.00011.00	WASHER, #8 SCREW SIZE, INTERNAL TOOTH LOCK
	8	8	1082.00033.00	SCREW, PAN HD PHIL. MACH., W/DUAL ACT WASHER, #6-32x3/8LG.
	7	4	1082.00031.00	SCREW, #10-32 X 5/8", PAN HD PHIL, MACHINE
	6	4	1083.00019.00	WASHER, #10 SCREW SIZE, SPRING LOCK
	5	1	1082.00018.00	SCREW, TRUSS HD. PHIL. SM, #8 X 1/2 LG.
	4	1	1021.00005.00	ROD, VIBRATION DAMPENING, GR-2
	3	1	1102.00023.00	COVER, GRINDER SERVICE ASSEMBLY, W/O RAILS
	2	4	1073.00006.00	FOOT, GRINDER
	1	1	1111.00025.00	WELDMENT BODY, COMPLETE, GR-1

ITEM NO		QTY	PART NO	DESCRIPTION
BILL OF MATERIALS				
TOLERANCES				
UNLESS OTHERWISE SPECIFIED				
ALL DIMENSIONS IN INCHES				
ALL DECIMAL ± .005" ANGULAR ± 1/2°				
THIRD-ANGLE				
MATERIAL N/A				
GAUGE N/A				
FINISH N/A				

FETCO FOOD EQUIPMENT TECHNOLOGIES COMPANY
 600 ROSE ROAD, LAKE ZURICH, IL 60047, USA
 PHONE: (800) 338-2699 FAX: (847) 719-3001
 E-MAIL: engineering@fetco.com www.fetco.com

ASSEMBLY, FINAL, GR-1.2

CREATED BY: SAK	DATE: 07/22/2011	DRAWING NO.:
DRAWING BY: SAK	SCALE: 0.125	1101.00118.00
APP'D BY: AG	SHEETS: 1 of 1	REVISION: D