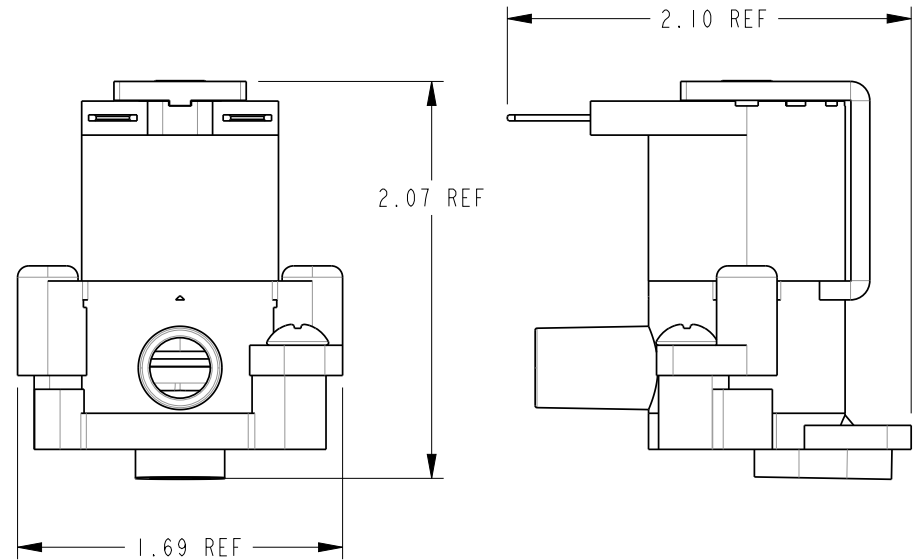
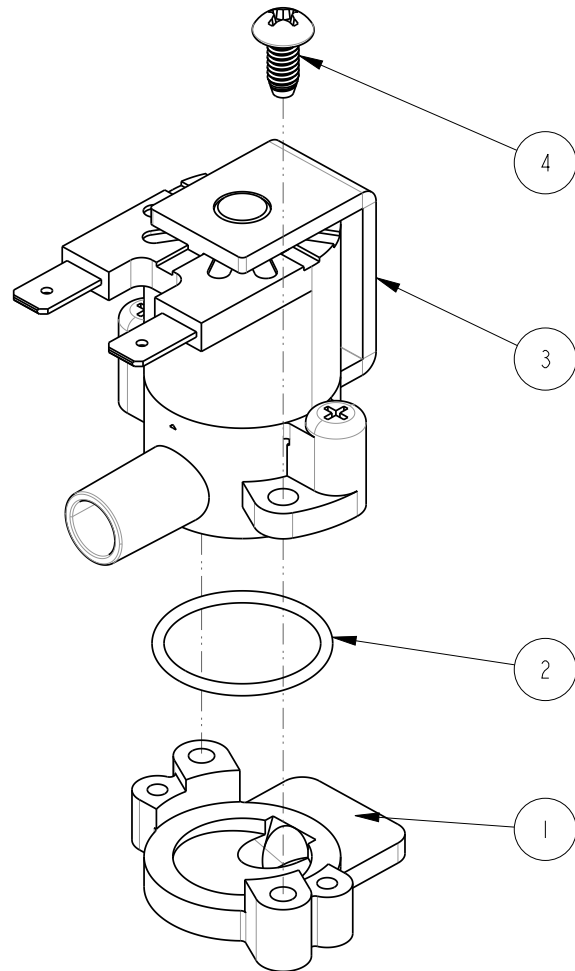


NOTES:

1. DRAWING TO BE INTERPRETED IN ACCORDANCE WITH THE CURRENT REVISION OF ASME Y14.5M.
2. TSI TO BE INTERPRETED AS THEORETICAL SHARP INTERSECTION.
3. PARTS SHALL BE FREE OF ALL CONTAMINANTS INCLUDING GREASE, DIRT, MACHINING OIL AND OTHER CONTAMINANTS.
4. PARTS SHALL BE PACKAGED IN A MANNER TO PREVENT SCRATCHING, BOWING OR OTHER DAMAGE DURING SHIPMENT.



REVISIONS				
REV	DATE	ECO NO	DESCRIPTION	BY:
A	06/10/2015	N/A	ORIGINAL	DK

A

ITEM NO	QTY	PART NO	DESCRIPTION
4	2	1082.00054.00	SCREW, #8-18 x 3/8" PAN HD PHIL, THREAD FORMING
3	1	1057.00067.00	VALVE, HOT WATER, 100-120VAC, 50/60HZ
2	1	1024.00002.00	O RING, 15/16 X 1/16 CS, DASH #019
1	1	1023.00266.00	HOUSING, HOT WATER VALVE, CBS-2121 AUTOMATIC

BILL OF MATERIALS

<p>TOLERANCES UNLESS OTHERWISE SPECIFIED</p> <p>ALL DIMENSIONS IN INCHES</p> <p>ALL DECIMAL ± .005" ANGULAR ± 1/2°</p> <p>THIRD-ANGLE</p>	<p>FETCO FOOD EQUIPMENT TECHNOLOGIES COMPANY 600 ROSE ROAD, LAKE ZURICH, IL 60047, USA PHONE: (800) 338-2699 FAX: (847) 719-3001 E-MAIL: engineering@fetco.com www.fetco.com</p>		
	<p>DRAWING NAME: ASS'Y., HOT WATER DISPENSE VALVE, CBS-2121, AUTO.</p>		
	<p>CREATED BY: DK</p>	<p>DATE 06/10/2015</p>	<p>DRAWING NO 1102.00326.00</p>
	<p>DRAWING BY: DK</p>	<p>SCALE 1.000</p>	<p>REVISION A</p>
<p>APP'D BY: LMW</p>	<p>SHEETS 1 of 1</p>	<p>FINISH N/A</p>	
<p>MATERIAL N/A</p>	<p>GAUGE N/A</p>	<p>FINISH N/A</p>	

PROPRIETARY AND CONFIDENTIAL.
THE INFORMATION CONTAINED IN THIS DRAWING IS THE SOLE PROPERTY OF FETCO.
ANY REPRODUCTION IN PART OR AS A WHOLE WITHOUT THE WRITTEN PERMISSION OF FETCO IS PROHIBITED.