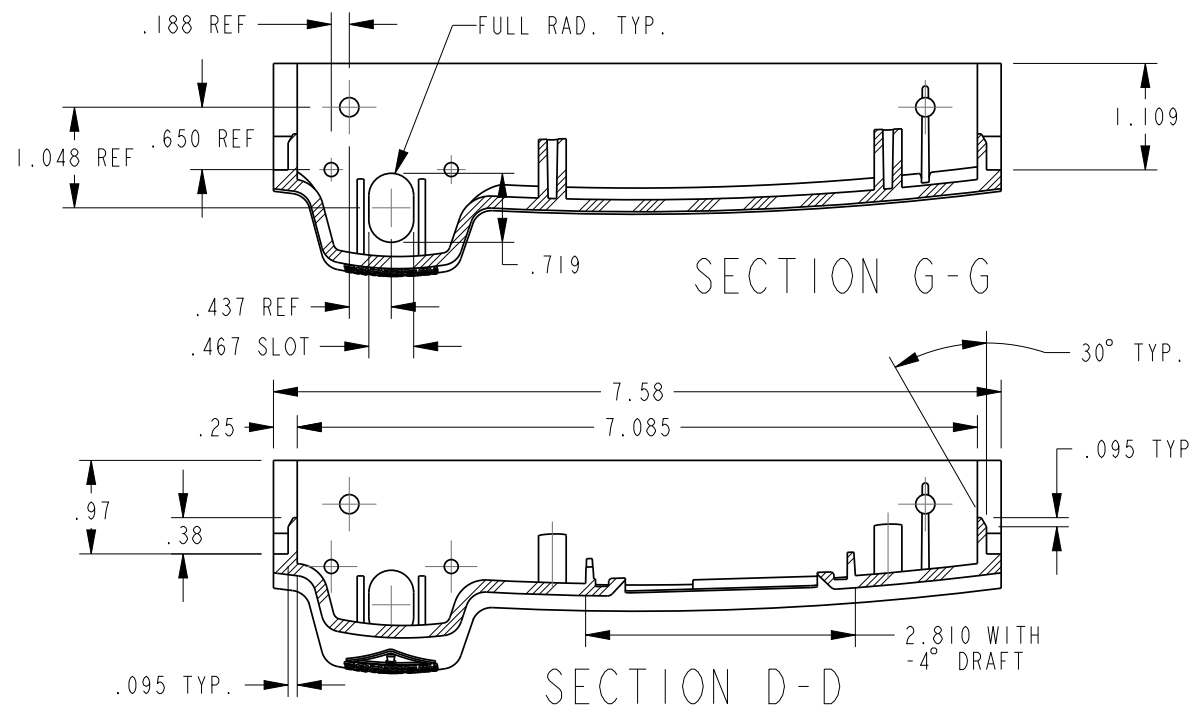
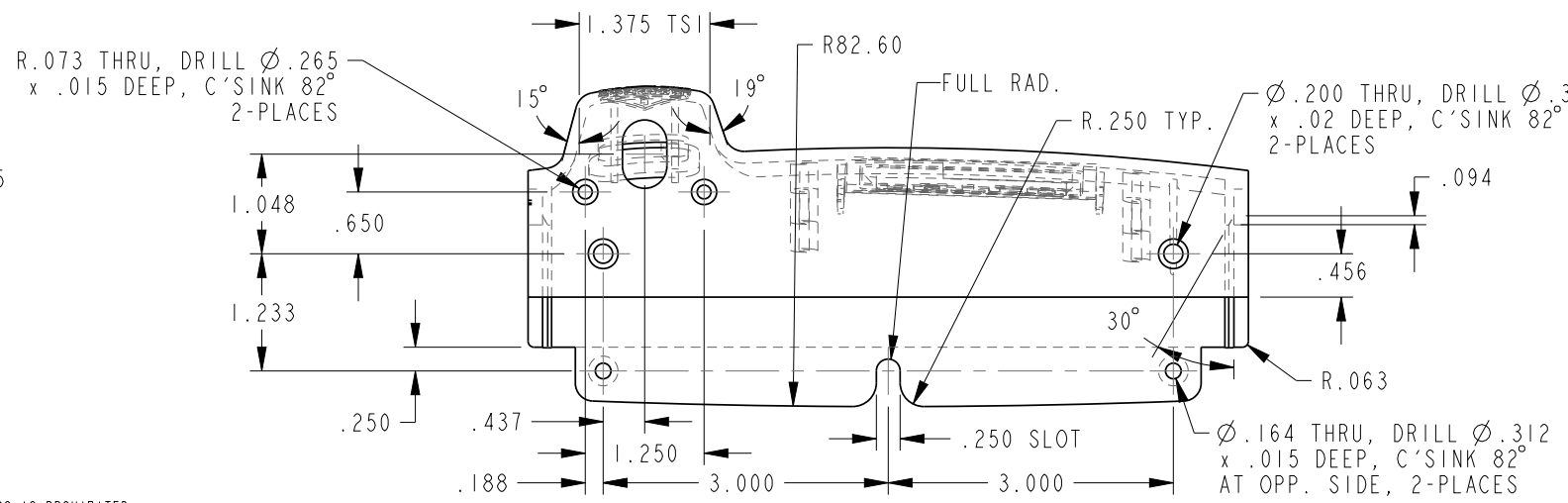
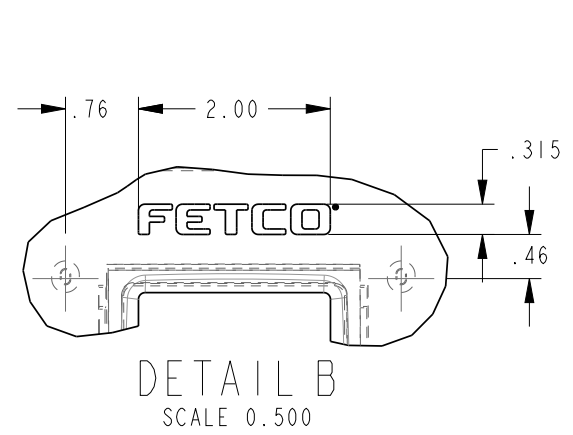
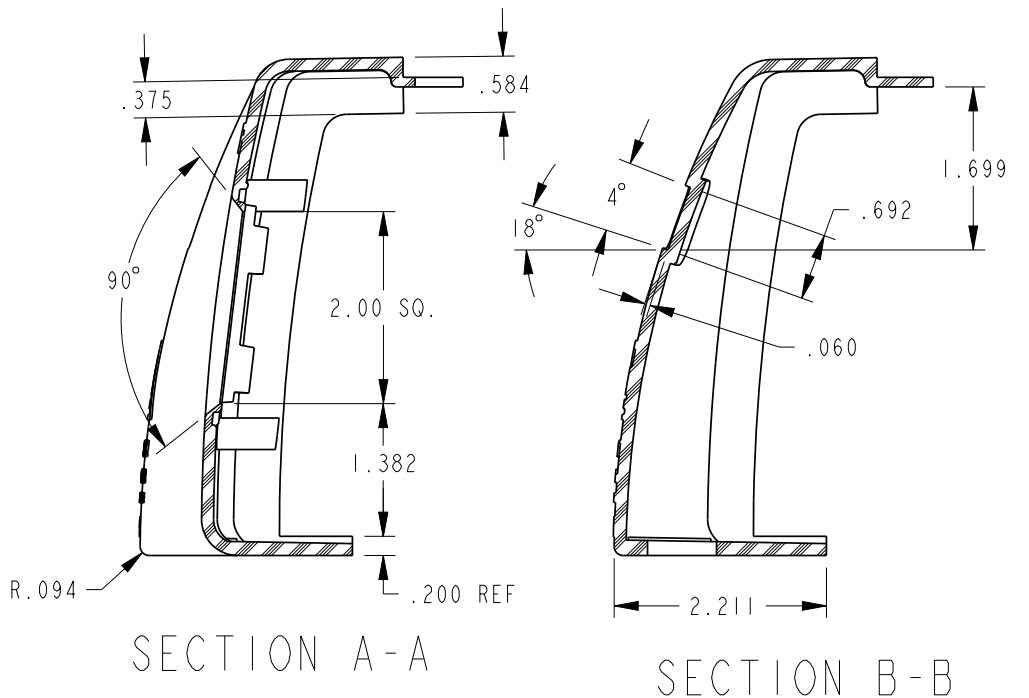
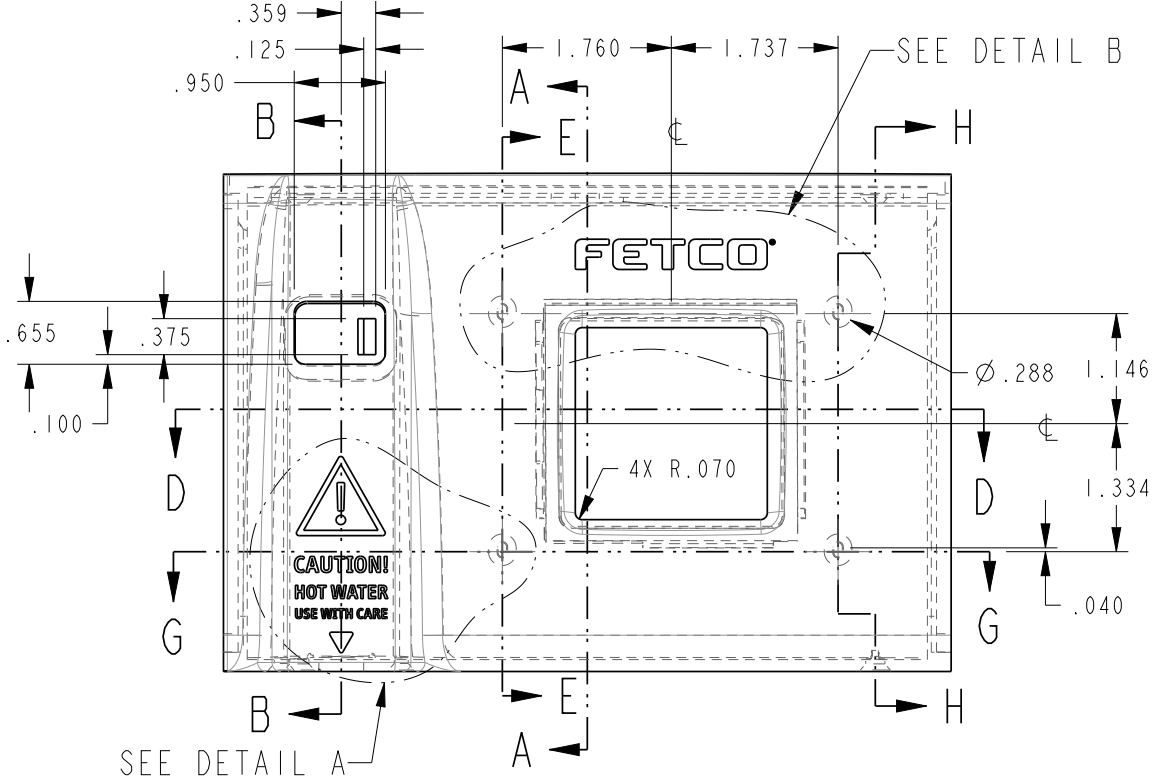
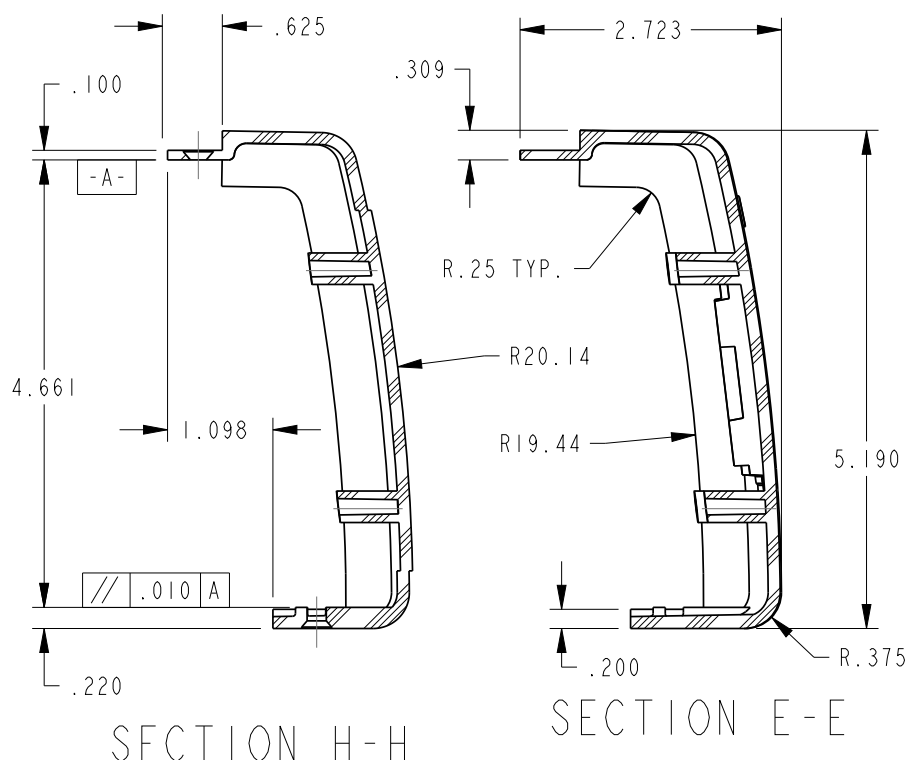
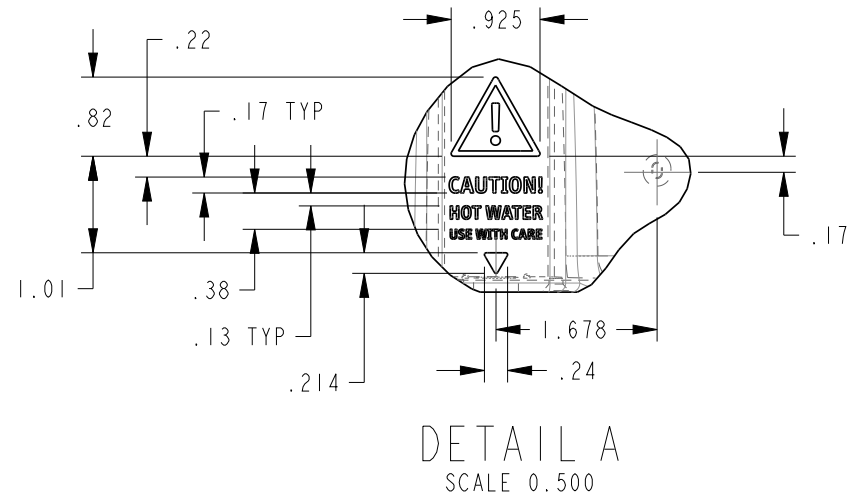


NOTES:

1. CHANGE OF MATERIAL IS NOT PERMITTED UNLESS APPROVED IN WRITING BY FETCO PERSONNEL.
2. DRAWING TO BE INTERPRETED IN ACCORDANCE WITH THE CURRENT REVISION OF ASME Y14.5M.
3. TSI TO BE INTERPRETED AS THEORETICAL SHARP INTERSECTION.
4. FLASH NOT TO EXCEED .005 UNLESS OTHERWISE STATED.
5. PARTING LINE AND EJECTOR MISMATCH SHALL NOT EXCEED .005 UNLESS OTHERWISE STATED.
6. ALL DIMENSIONS ARE MINUS DRAFT UNLESS OTHERWISE STATED.
7. USE OF MOLD RELEASE IS PROHIBITED UNLESS APPROVED IN WRITING BY FETCO ENGINEERING PERSONEL.
8. TOOL DESIGN, INCLUDING GATE AND EJECTOR LOCATION, SHALL BE APPROVED BY FETCO ENGINEERING PERSONEL PRIOR TO TOOLING FABRICATION.
9. PARTS SHALL BE PACKAGE IN A MANNER TO PREVENT BOWING, SCRATCHING, OR OTHER DAMAGE DURING SHIPMENT



REVISIONS				
REV	DATE	ECO NO	DESCRIPTION	BY:
A	07/23/2014	N/A	ORIGINAL	DK



TOLERANCES		FETCO FOOD EQUIPMENT TECHNOLOGIES COMPANY	
UNLESS OTHERWISE SPECIFIED		600 ROSE ROAD, LAKE ZURICH, IL 60047, USA PHONE: (800) 338-2699 FAX: (847) 719-3001 E-MAIL: engineering@fetco.com www.fetco.com	
ALL DIMENSIONS IN INCHES		DRAWING NAME: FRONT PANEL, CBS-2121, COMBO	
ALL DECIMAL ± .005"	ANGULAR ± 1/2°	CREATED BY: DK	DATE: 07/23/2014
THIRD-ANGLE		DRAWING BY: E. FORONDA	SCALE: 0.500
		APP'D BY: SP	SHEETS: 1 of 1
MATERIAL: KING FA, PC+ABS, JH960-6205	GAUGE: N/A	DRAWING NO. 1023.00258.00	
		REVISION A	
		FINISH N/A	

PROPRIETARY AND CONFIDENTIAL. THE INFORMATION CONTAINED IN THIS DRAWING IS THE SOLE PROPERTY OF FETCO. ANY REPRODUCTION IN PART OR AS A WHOLE WITHOUT THE WRITTEN PERMISSION OF FETCO IS PROHIBITED.