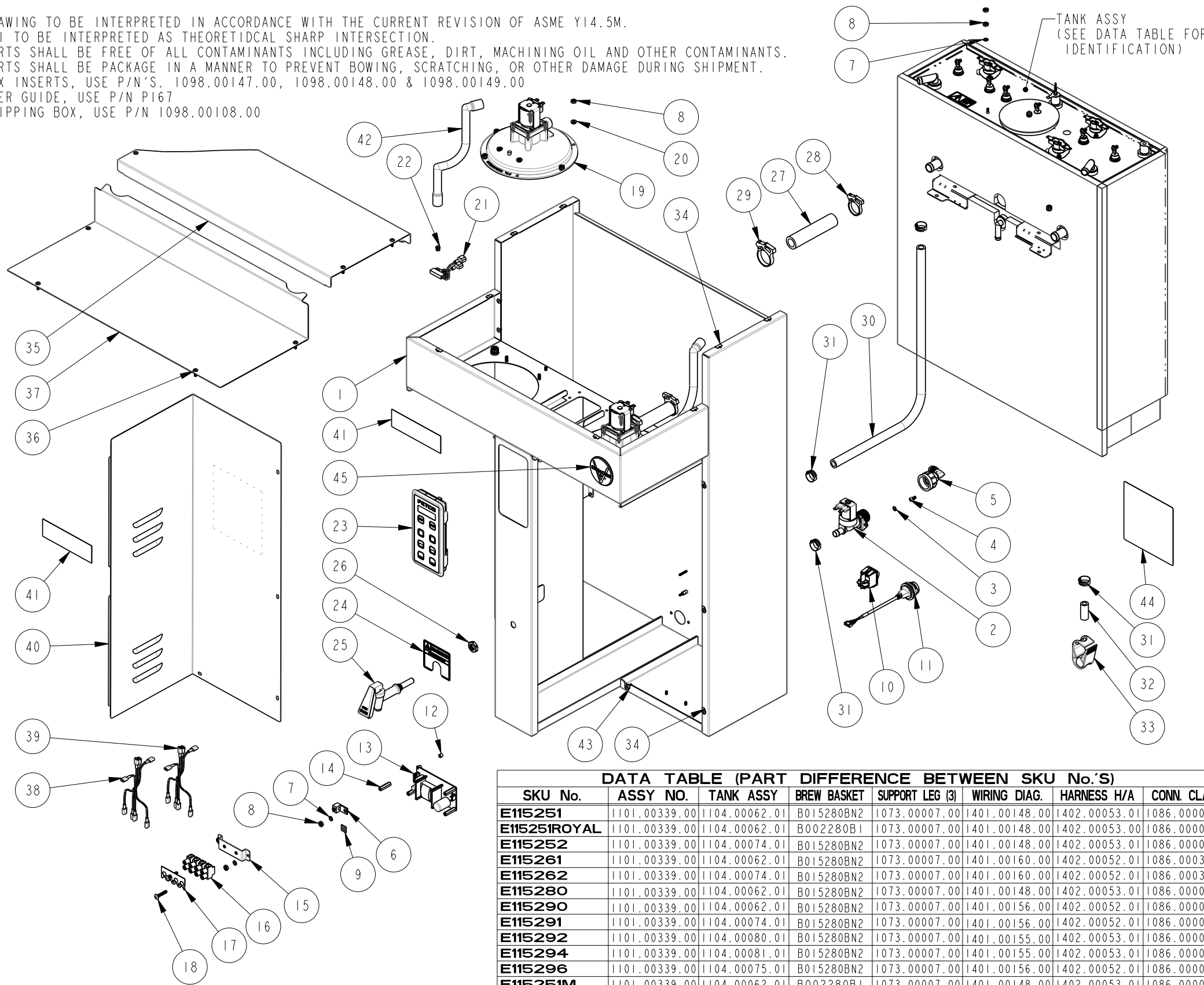


NOTES:

1. DRAWING TO BE INTERPRETED IN ACCORDANCE WITH THE CURRENT REVISION OF ASME Y14.5M.
2. TSI TO BE INTERPRETED AS THEORETICAL SHARP INTERSECTION.
3. PARTS SHALL BE FREE OF ALL CONTAMINANTS INCLUDING GREASE, DIRT, MACHINING OIL AND OTHER CONTAMINANTS.
4. PARTS SHALL BE PACKAGED IN A MANNER TO PREVENT BOWING, SCRATCHING, OR OTHER DAMAGE DURING SHIPMENT.
5. BOX INSERTS, USE P/N'S. 1098.00147.00, 1098.00148.00 & 1098.00149.00
6. USER GUIDE, USE P/N PI67
7. SHIPPING BOX, USE P/N 1098.00108.00



DATA TABLE (PART DIFFERENCE BETWEEN SKU No.'S)

| SKU No. | ASSY NO. | TANK ASSY | BREW BASKET | SUPPORT LEG (3) | WIRING DIAG. | HARNESS H/A | CONN. CLAMP |
|--------------|---------------|---------------|-------------|-----------------|---------------|---------------|---------------|
| E115251 | 1101.00339.00 | 1104.00062.01 | B015280BN2 | 1073.00007.00 | 1401.00148.00 | 1402.00053.01 | 1086.00008.00 |
| E115251ROYAL | 1101.00339.00 | 1104.00062.01 | B002280B1 | 1073.00007.00 | 1401.00148.00 | 1402.00053.00 | 1086.00008.00 |
| E115252 | 1101.00339.00 | 1104.00074.01 | B015280BN2 | 1073.00007.00 | 1401.00148.00 | 1402.00053.01 | 1086.00008.00 |
| E115261 | 1101.00339.00 | 1104.00062.01 | B015280BN2 | 1073.00007.00 | 1401.00160.00 | 1402.00052.01 | 1086.00031.00 |
| E115262 | 1101.00339.00 | 1104.00074.01 | B015280BN2 | 1073.00007.00 | 1401.00160.00 | 1402.00052.01 | 1086.00031.00 |
| E115280 | 1101.00339.00 | 1104.00062.01 | B015280BN2 | 1073.00007.00 | 1401.00148.00 | 1402.00053.01 | 1086.00008.00 |
| E115290 | 1101.00339.00 | 1104.00062.01 | B015280BN2 | 1073.00007.00 | 1401.00156.00 | 1402.00052.01 | 1086.00008.00 |
| E115291 | 1101.00339.00 | 1104.00074.01 | B015280BN2 | 1073.00007.00 | 1401.00156.00 | 1402.00052.01 | 1086.00008.00 |
| E115292 | 1101.00339.00 | 1104.00080.01 | B015280BN2 | 1073.00007.00 | 1401.00155.00 | 1402.00053.01 | 1086.00008.00 |
| E115294 | 1101.00339.00 | 1104.00081.01 | B015280BN2 | 1073.00007.00 | 1401.00155.00 | 1402.00053.01 | 1086.00008.00 |
| E115296 | 1101.00339.00 | 1104.00075.01 | B015280BN2 | 1073.00007.00 | 1401.00156.00 | 1402.00052.01 | 1086.00008.00 |
| E115251M | 1101.00339.00 | 1104.00062.01 | B002280B1 | 1073.00007.00 | 1401.00148.00 | 1402.00053.01 | 1086.00008.00 |
| E115252M | 1101.00339.00 | 1104.00074.01 | B002280B1 | 1073.00007.00 | 1401.00148.00 | 1402.00053.01 | 1086.00008.00 |
| E115261M | 1101.00339.00 | 1104.00062.01 | B002280B1 | 1073.00007.00 | 1401.00160.00 | 1402.00052.01 | 1086.00008.00 |
| E115262M | 1101.00339.00 | 1104.00074.01 | B002280B1 | 1073.00007.00 | 1401.00160.00 | 1402.00052.01 | 1086.00031.00 |
| E115280M | 1101.00339.00 | 1104.00062.01 | B002280B1 | 1073.00007.00 | 1401.00148.00 | 1402.00053.01 | 1086.00031.00 |
| E115290M | 1101.00339.00 | 1104.00062.01 | B002280B1 | 1073.00007.00 | 1401.00156.00 | 1402.00052.01 | 1086.00008.00 |
| E115291M | 1101.00339.00 | 1104.00074.01 | B002280B1 | 1073.00007.00 | 1401.00156.00 | 1402.00052.01 | 1086.00008.00 |
| E115292M | 1101.00339.00 | 1104.00080.01 | B002280B1 | 1073.00007.00 | 1401.00155.00 | 1402.00053.01 | 1086.00008.00 |
| E115294M | 1101.00339.00 | 1104.00081.01 | B002280B1 | 1073.00007.00 | 1401.00155.00 | 1402.00053.01 | 1086.00008.00 |
| E115296M | 1101.00339.00 | 1104.00075.01 | B002280B1 | 1073.00007.00 | 1401.00156.00 | 1402.00052.01 | 1086.00008.00 |

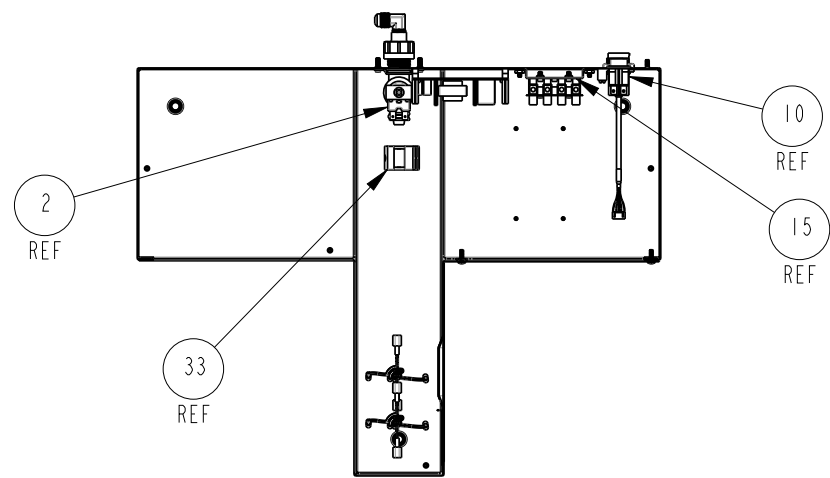
| REVISIONS | | | | |
|-----------|------------|--------|-------------|-----|
| REV | DATE | ECO NO | DESCRIPTION | BY: |
| A | 07/18/2016 | N/A | ORIGINAL | DK |

| | | | |
|----|----|---------------|---|
| 45 | 1 | 1041.00031.00 | LABEL, EXTRACTOR V+ LOGO |
| 44 | 1 | 1046.00035.00 | LABEL, WARNING "TO REDUCE RISK OF ELECTRIC SHOCK OR FIRE" |
| 43 | 1 | 1084.00024.00 | NUT, CLIP ON (J-NUT), #6-32, 1050 SPR. STL. |
| 42 | 2 | 1024.00098.00 | VENT TUBE, XTS AND I1XX |
| 41 | 2 | 1046.00003.00 | LABEL, CSD WARNING, 1.5" X 5.0" |
| 40 | 1 | 1112.00470.00 | WELDMENT, RIGHT COVER, CBS-1150 XV+ |
| 39 | 1 | 1402.00097.02 | HARNESS ADDITION, LOW AMP, CBS-1152-XV+, UL |
| 38 | 1 | 1402.00097.01 | HARNESS, LOW AMP, CBS-1151-XV+, UL |
| 37 | 1 | 1001.00352.00 | COVER, UPPER BASE, CBS-1152 EXTRACTOR V+ |
| 36 | 12 | 1082.00017.00 | SCREW, TRUSS HD. PHIL. MACHINE, # 6-32 X 1/2 LG. |
| 35 | 1 | 1001.00372.00 | COVER, TOP, CBS-1152 EXTRACTOR V+ |
| 34 | 11 | 1084.00011.00 | NUT, CLIP ON (J-NUT), #6-32, 22-20 GA., BLK-PH FINISH |
| 33 | 1 | 1086.00009.00 | CLAMP, 3/4" MAX TUBE OD FLOW CONTROL |
| 32 | 1 | 1025.00058.00 | TUBE, 9/16"OD X 5/16"ID X 25.00"LG |
| 31 | 4 | 1086.00003.00 | UNICLAMP, 15.9 HOSE OD CLAMP |
| 30 | 1 | 1025.00082.00 | TUBE, 5/8"OD X 3/8"ID X 19.00"LG. |
| 29 | 2 | 1086.00017.00 | HEYCO HOSE CLAMP DIA. .1031-1.187 |
| 28 | 2 | 1086.00018.00 | HEYCO HOSE CLAMP DIA. .875-1.00 |
| 27 | 2 | 1025.00021.00 | TUBE, 31/32"OD X 5/8"ID X 4 1/4"LG, BREW |
| 26 | 1 | 1084.00048.00 | JAM NUT, 1/2-20 UNF, NICKEL PLATED BRASS |
| 25 | 1 | 1071.00055.00 | FAUCET, HOT WATER, PSC-BR-8, WITH FLAT AND STEM |
| 24 | 1 | 1046.00051.00 | LABEL, "WARNING, EXTREMELY HOT WATER" |
| 23 | 1 | 1102.00372.00 | ASSEMBLY, FRONT PANEL, CBS-1100 DUAL |
| 22 | 4 | 1029.00006.00 | NUT, FINGER, #4-40 NYLON |
| 21 | 2 | 1102.00113.00 | SWITCH, REED, ASSEMBLY |
| 20 | 12 | 1083.00010.00 | WASHER, #10 SCREW W/NEOPRENE-BONDED SEAL |
| 19 | 2 | 1102.00223.01 | SPRAY HOUSING, LARGE, 24 VDC, STRONGER COIL |
| 18 | 2 | 1082.00082.00 | SCREW, PHILLIP HD., 8-32 THREAD |
| 17 | 1 | 1052.00025.00 | PLATE, MARKING #BS1016E |
| 16 | 1 | 1052.00023.00 | EUROSTRIP HE16 TERMINAL BLOCK, 4 POLE, 63 AMP, 18-8 AWG |
| 15 | 1 | 1112.00268.00 | WELDMENT, BRACKET TERMINAL BLOCK, 4 POLE |
| 14 | 4 | 1029.00012.00 | SPACER, .25" HEX X 1" LG, FEM #4-40 THREAD |
| 13 | 1 | 1052.00001.00 | POWER SUPPLY, 90-264VAC/24VDC, 1.8A |
| 12 | 8 | 1081.00006.00 | SPACER, 6MM OD X 3.2MM ID X 5MM LG, Z/P |
| 11 | 1 | 1058.00055.00 | USB CONNECTOR |
| 10 | 1 | 1058.00024.00 | SWITCH, POWER, DOUBLE POLE, 16A, 125/250 VAC |
| 9 | 1 | 1044.00012.00 | LABEL GROUND, CE |
| 8 | 19 | 1084.00006.00 | NUT, 8-32 18-8 HEX MACHINE SCREW |
| 7 | 5 | 1083.00011.00 | WASHER, #8 SCREW SIZE, INTERNAL TOOTH LOCK |
| 6 | 1 | 1065.00009.00 | GROUND LUG CONNECTOR, 14-2 AWG, ALUMINUM |
| 5 | 1 | 1102.00243.00 | ADAPTER ASSY, 3/4" BSP X 1/4" NPT X 3/8" TUBE |
| 4 | 2 | 1082.00010.00 | SCREW, M4X10 ZINC-PLATED PAN HD. PHILLIPS MACH. |
| 3 | 2 | 1083.00005.00 | WASHER, M4 18-8 INTERNAL TOOTH LOCKWASHER |
| 2 | 1 | 1057.00043.00 | SOLENOID VALVE, 5.5L/min, 180 DEG, 24VDC |
| 1 | 1 | 1111.00086.00 | WELDMENT BODY COMPLETE, CBS-1152 XV+ |

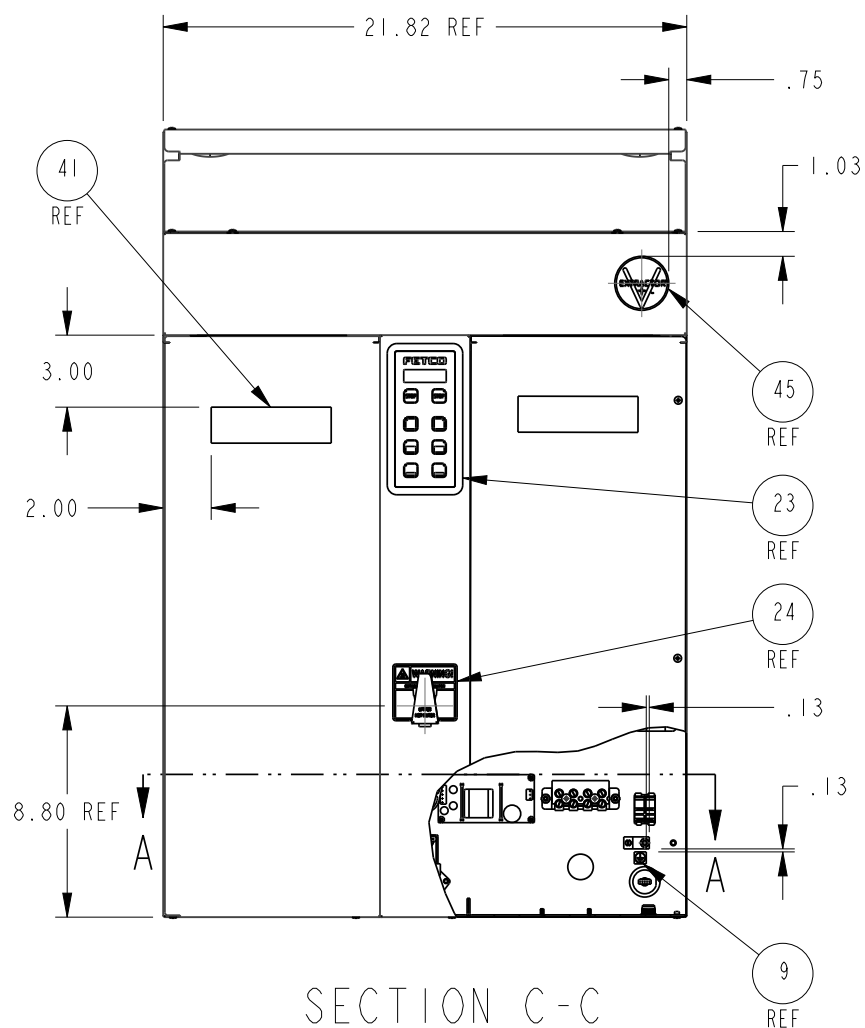
| BILL OF MATERIALS | | | |
|----------------------------|-----|---------|-------------|
| ITEM NO | QTY | PART NO | DESCRIPTION |
| TOLERANCES | | | |
| UNLESS OTHERWISE SPECIFIED | | | |
| ALL DIMENSIONS IN INCHES | | | |
| DECIMAL ± .005" | | | |
| ANGULAR ± 1/2° | | | |
| THIRD-ANGLE | | | |
| MATERIAL N/A | | | |
| GAUGE N/A | | | |
| FINISH N/A | | | |

| | | |
|--|------------|---------------|
| FETCO FOOD EQUIPMENT TECHNOLOGIES COMPANY | | |
| 600 ROSE ROAD, LAKE ZURICH, IL 60047, USA | | |
| PHONE: (800) 338-2699 FAX: (847) 719-3001 | | |
| E-MAIL: engineering@fetco.com www.fetco.com | | |
| DRAWING NAME: | | |
| ASSEMBLY, CBS-1152 XV+, COMMON | | |
| CREATED BY: | DATE: | DRAWING NO.: |
| DK | 07/18/2016 | 1101.00339.00 |
| DRAWING BY: | SCALE: | REVISION: |
| DK | 0.125 | A |
| APP'D BY: | SHEETS: | REVISION: |
| AG | 1 of 13 | A |

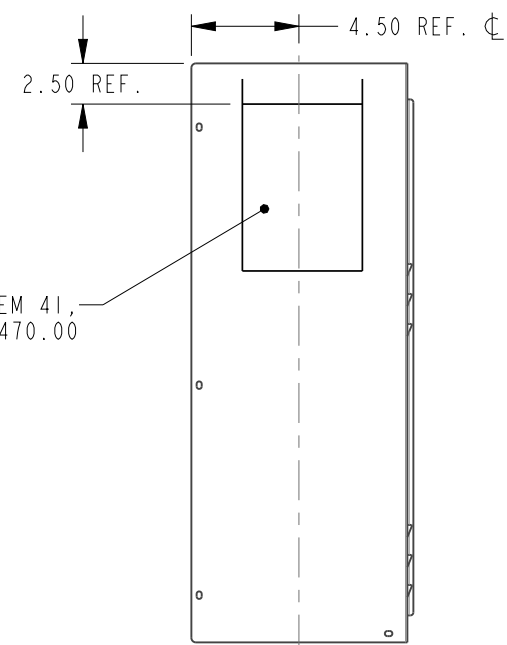
PROPRIETARY AND CONFIDENTIAL. THE INFORMATION CONTAINED IN THIS DRAWING IS THE SOLE PROPERTY OF FETCO. ANY REPRODUCTION IN PART OR AS A WHOLE WITHOUT THE WRITTEN PERMISSION OF FETCO IS PROHIBITED.



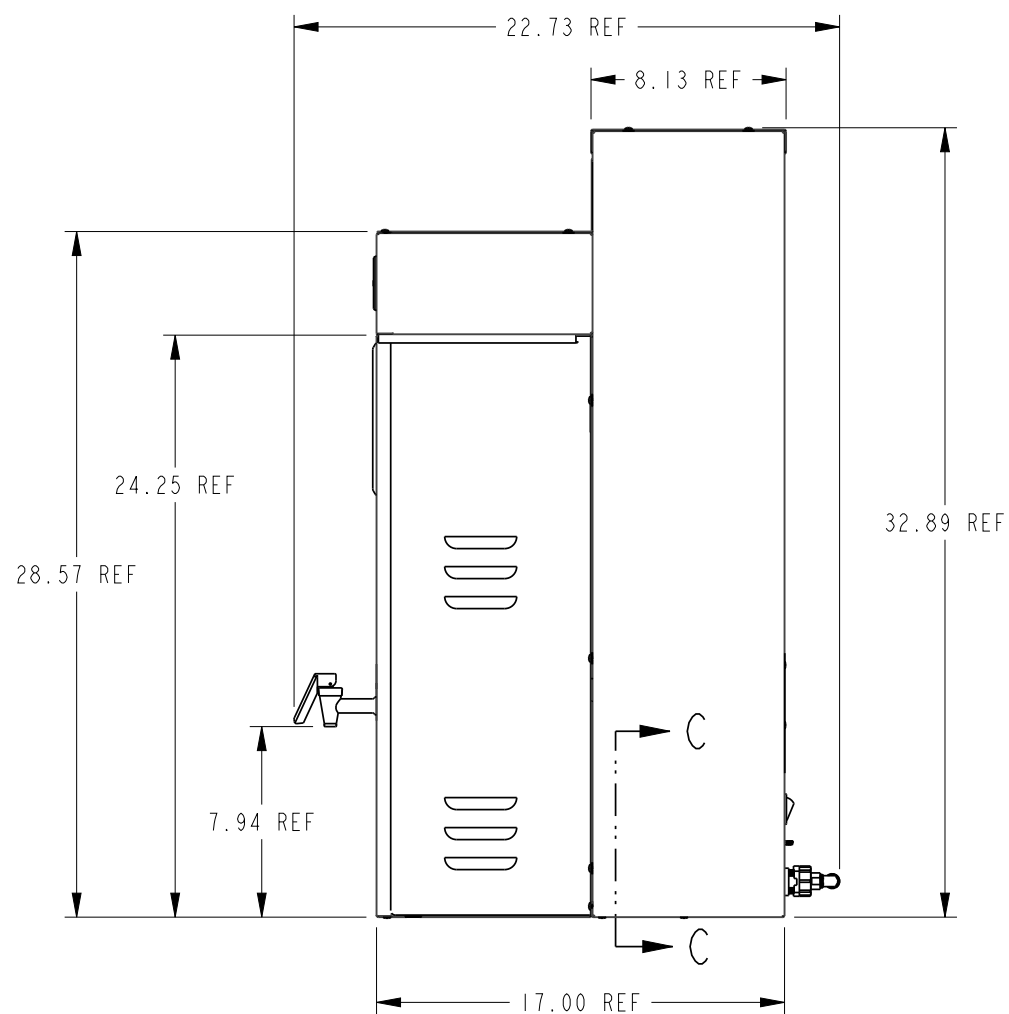
SECTION A-A



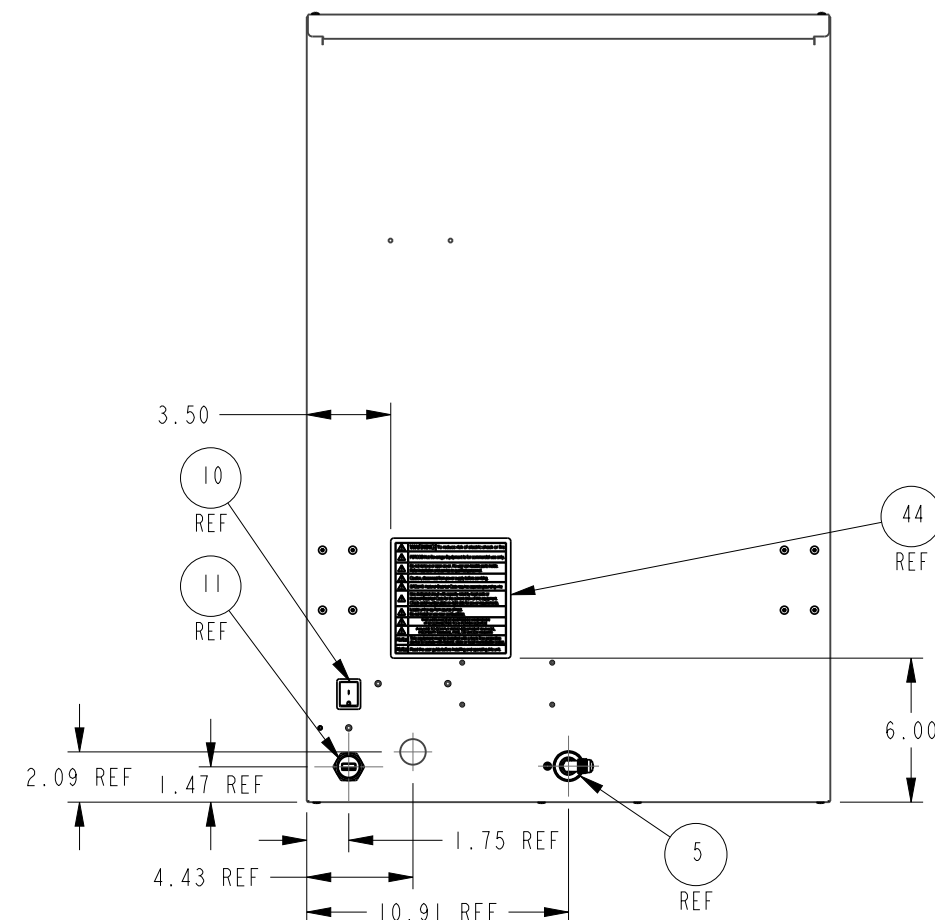
SECTION C-C



SCHEMATIC ON THE BACK OF ITEM 41,
1112.00470.00



POSITION LABELS AS SHOWN

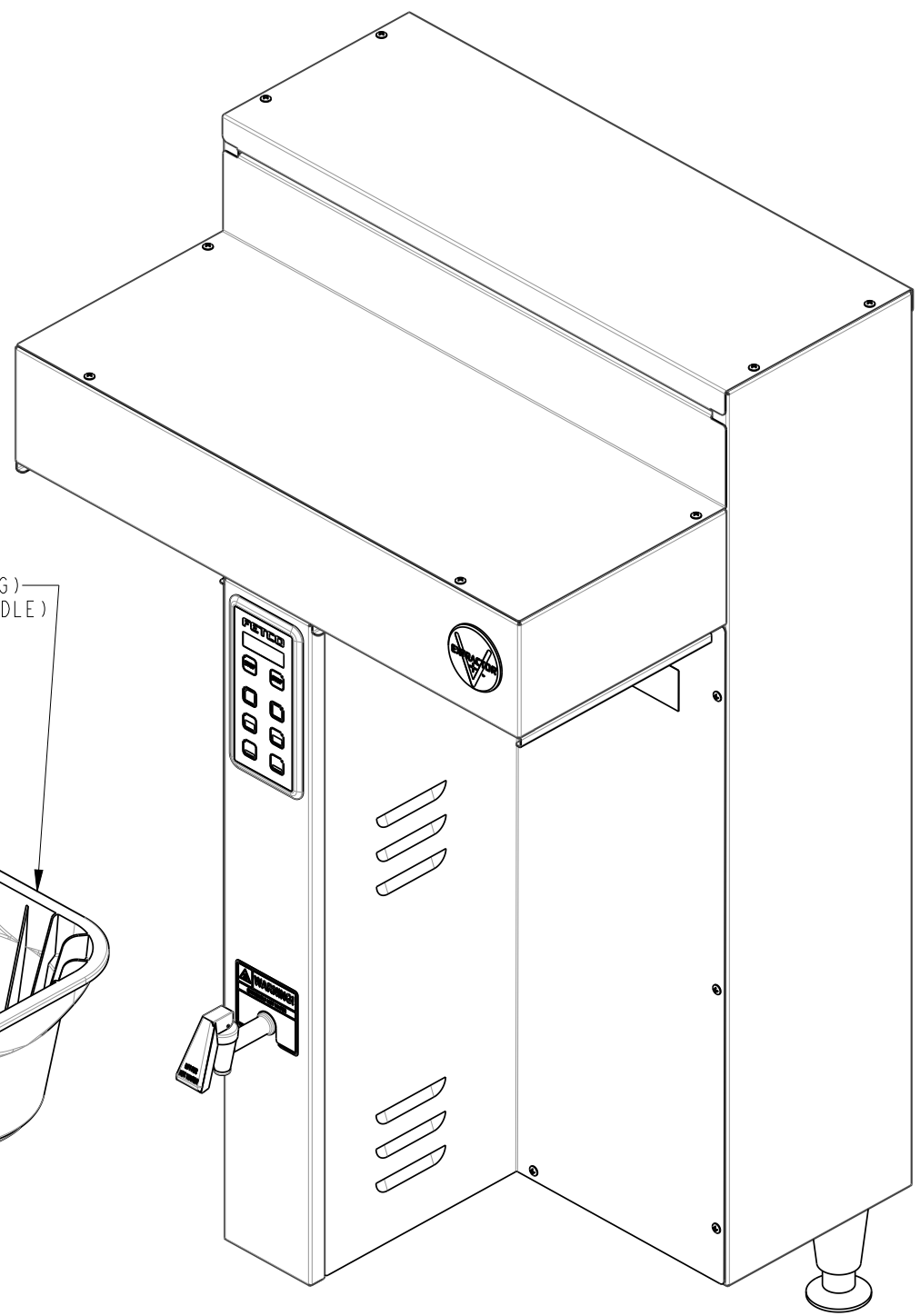


PROPRIETARY AND CONFIDENTIAL.
THE INFORMATION CONTAINED IN THIS DRAWING IS THE SOLE PROPERTY OF FETCO.
ANY REPRODUCTION IN PART OR AS A WHOLE WITHOUT THE WRITTEN PERMISSION OF FETCO IS PROHIBITED.

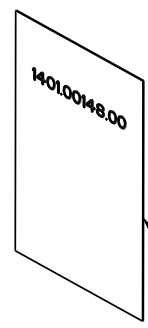
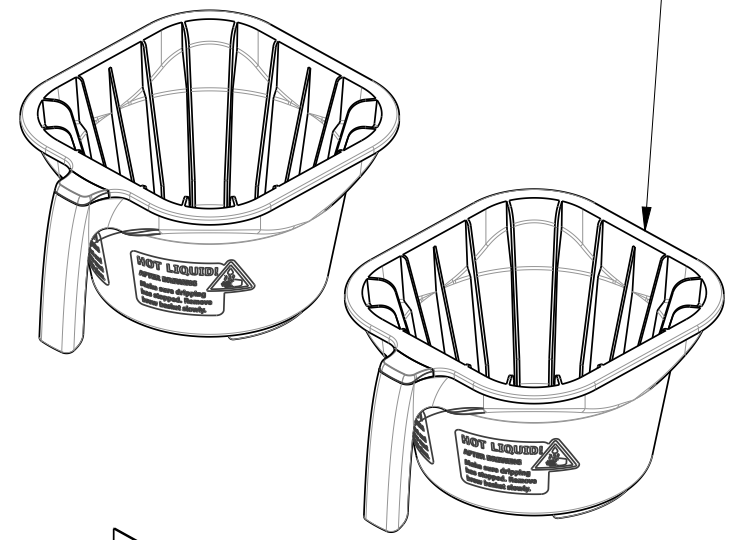
| | | |
|---|--------------------|-------------------------------------|
| TOLERANCES | | |
| UNLESS OTHERWISE SPECIFIED | | |
| ALL DIMENSIONS IN INCHES | | |
| ALL DECIMAL ± .005" ANGULAR ± 1/2° | | |
| THIRD-ANGLE | | |
| MATERIAL N/A | | |
| GAUGE N/A | | |
| FINISH N/A | | |
| FETCO FOOD EQUIPMENT TECHNOLOGIES COMPANY 600 ROSE ROAD, LAKE ZURICH, IL 60047, USA PHONE: (800) 338-2699 FAX: (847) 719-3001 E-MAIL: engineering@fetco.com www.fetco.com | | |
| DRAWING NAME: ASSEMBLY, CBS-1152 XV+, COMMON | | |
| CREATED BY: DK | DATE 07/18/2016 | DRAWING NO. 1101.00339.00 |
| DRAWING BY: DK | SCALE 0.125 | REVISION A |
| APP'D BY: AG | SHEETS 2 of 13 | |

| REVISIONS | | | | |
|-----------|------------|--------|-------------|-----|
| REV | DATE | ECO NO | DESCRIPTION | BY: |
| A | 07/18/2016 | N/A | ORIGINAL | DK |

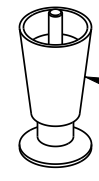
A



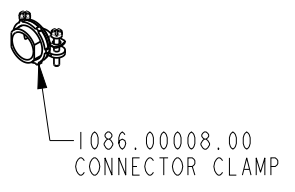
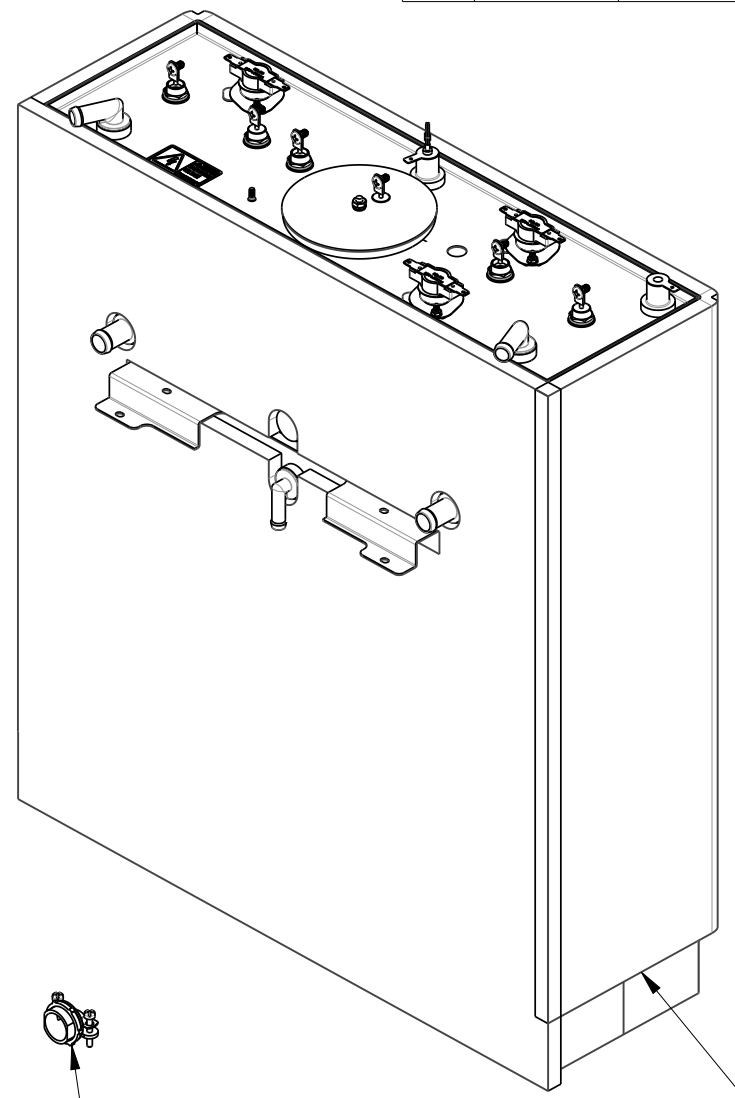
SKU # E115251 - 2X B015280BN2 (BROWN PLUG)
 SKU # E115251M - 2X B002280B1 (BLACK HANDLE)
 BB ASSEMBLY, 16" x 6", Ø.280" HOLE



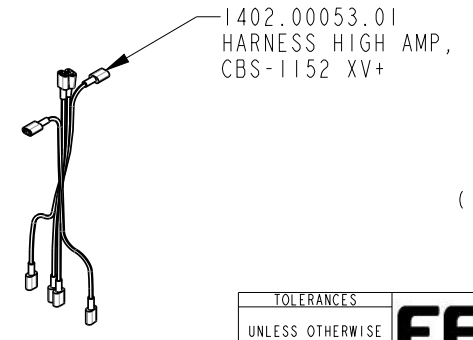
1401.00148.00
 WIRING, CBS-1152 XV+
 (L1, L2, L3 + GND), 3 HEATERS, UL



3X 1073.00007.00
 LEG, FLANGE FOOT,
 4" HIGH



1086.00008.00
 CONNECTOR CLAMP



1402.00053.01
 HARNESS HIGH AMP,
 CBS-1152 XV+

1104.00062.01
 TANK ASSEMBLY, CBS-1152 XV+
 3 x 3kW/240VAC

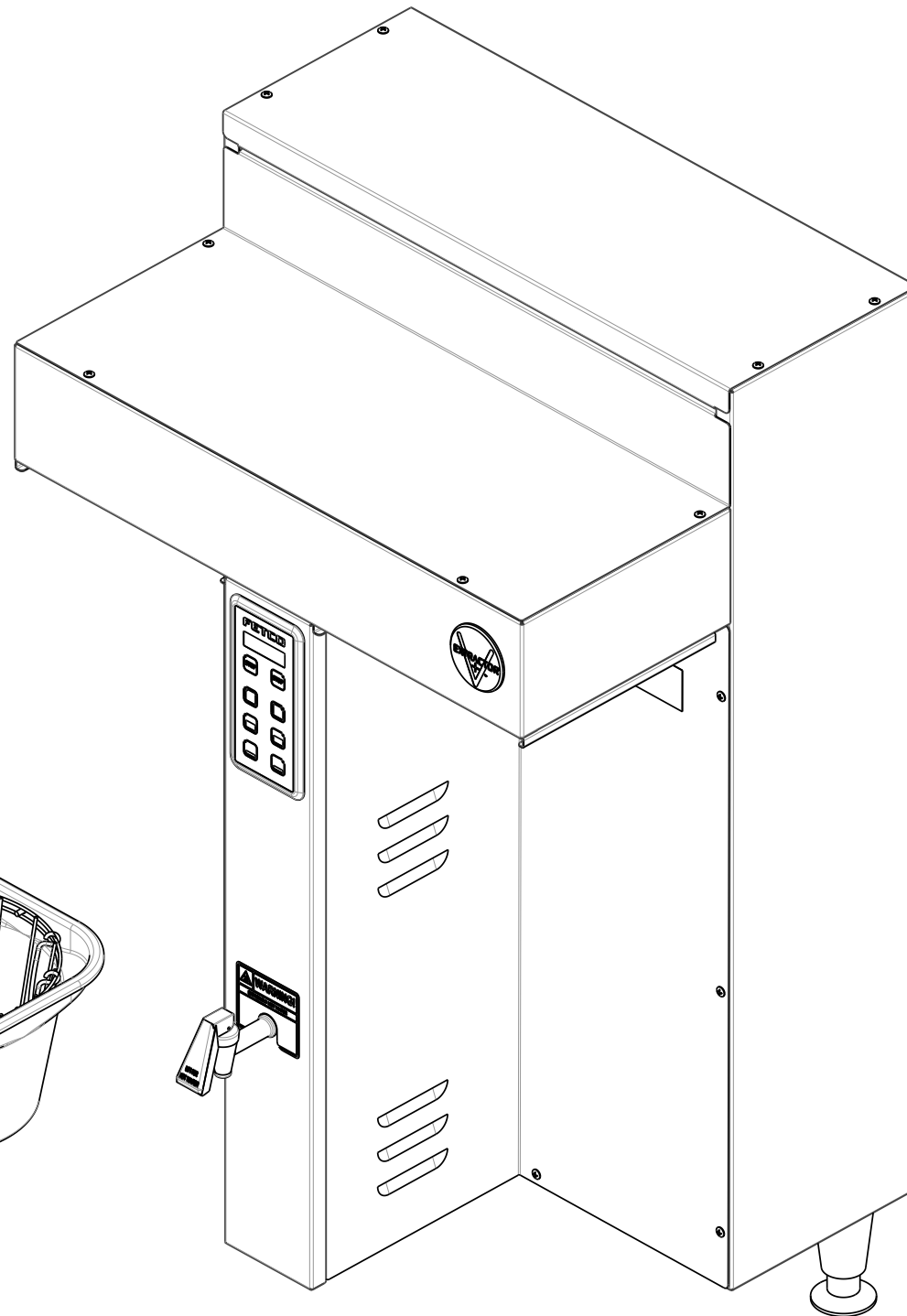
E115251 & E115251M
 (IDENTICAL TO 1101.00339.00 EXCEPT AS NOTED)

PROPRIETARY AND CONFIDENTIAL.
 THE INFORMATION CONTAINED IN THIS DRAWING IS THE SOLE PROPERTY OF FETCO.
 ANY REPRODUCTION IN PART OR AS A WHOLE WITHOUT THE WRITTEN PERMISSION OF FETCO IS PROHIBITED.

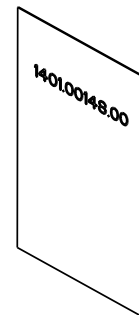
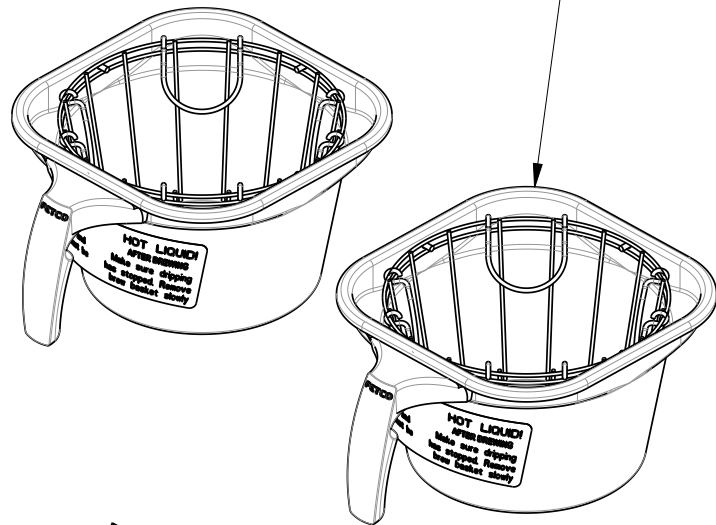
| TOLERANCES | | FETCO® FOOD EQUIPMENT TECHNOLOGIES COMPANY | |
|---------------------------------------|--------------|---|--------------------|
| UNLESS OTHERWISE SPECIFIED | | 600 ROSE ROAD, LAKE ZURICH, IL 60047, USA PHONE: (800) 338-2699 FAX: (847) 719-3001 E-MAIL: engineering@fetco.com www.fetco.com | |
| ALL DIMENSIONS IN INCHES | | DRAWING NAME: CBS-1152 XV⁺, 1 or 3Ph, 2 or 3IG, 3 X 3kW/240VAC, 208-240VAC | |
| ALL DECIMAL ± .005" ANGULAR ± 1/2° | THIRD-ANGLE | CREATED BY: DK | DATE 07/18/2016 |
| | | DRAWING BY: DK | SCALE 0.188 |
| | | APP'D BY: AG | SHEETS 3 of 13 |
| MATERIAL N/A | GAUGE N/A | DRAWING NO. E115251 | |
| | | FINISH N/A | |
| | | REVISION A | |

REVISIONS

| REV | DATE | ECO NO | DESCRIPTION | BY: | A |
|-----|------------|--------|-------------|-----|---|
| A | 07/18/2016 | N/A | ORIGINAL | DK | |



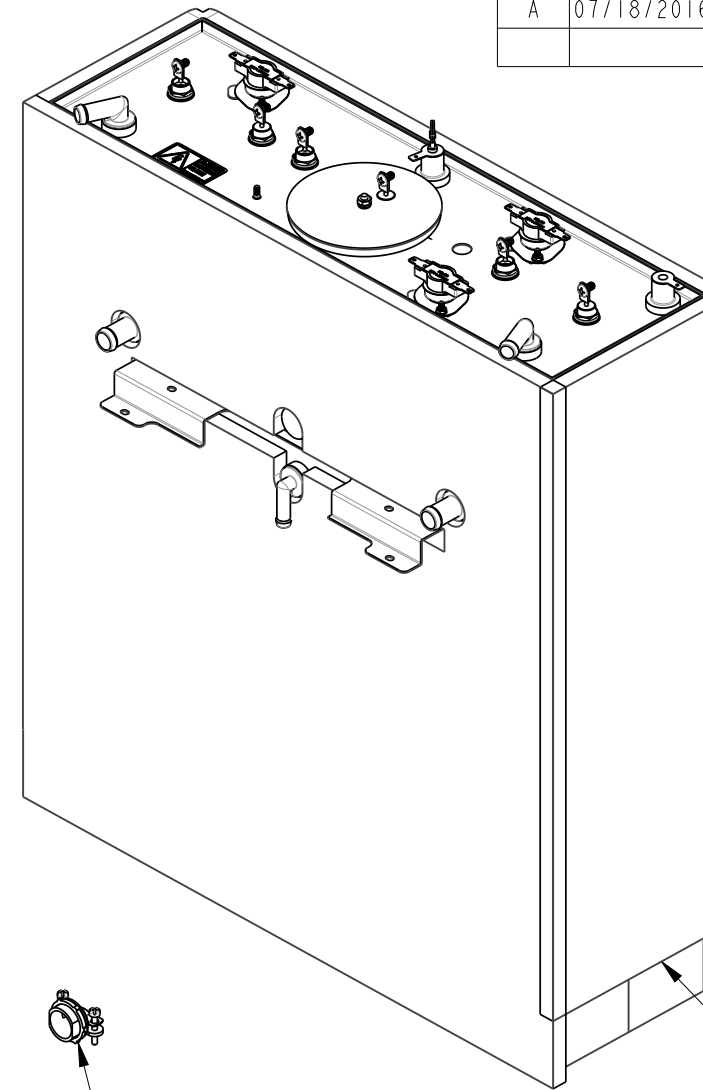
2X B002280B1 (BLACK HANDLE W/ CLIPS)
BB ASSEMBLY, 16" x 6", Ø.280" HOLE



1401.00148.00
WIRING, CBS-1152 XV+
(L1, L2, L3 + GND), 3 HEATERS, UL



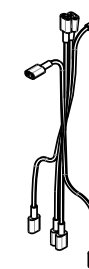
3X 1073.00007.00
LEG, FLANGE FOOT,
4" HIGH



1086.00008.00
CONNECTOR CLAMP

1402.00053.01
HARNESS HIGH AMP
CBS-1152 XV+, UL

1104.00062.01
TANK ASSEMBLY, CBS-1152 XV+
3 x 3kW/240VAC



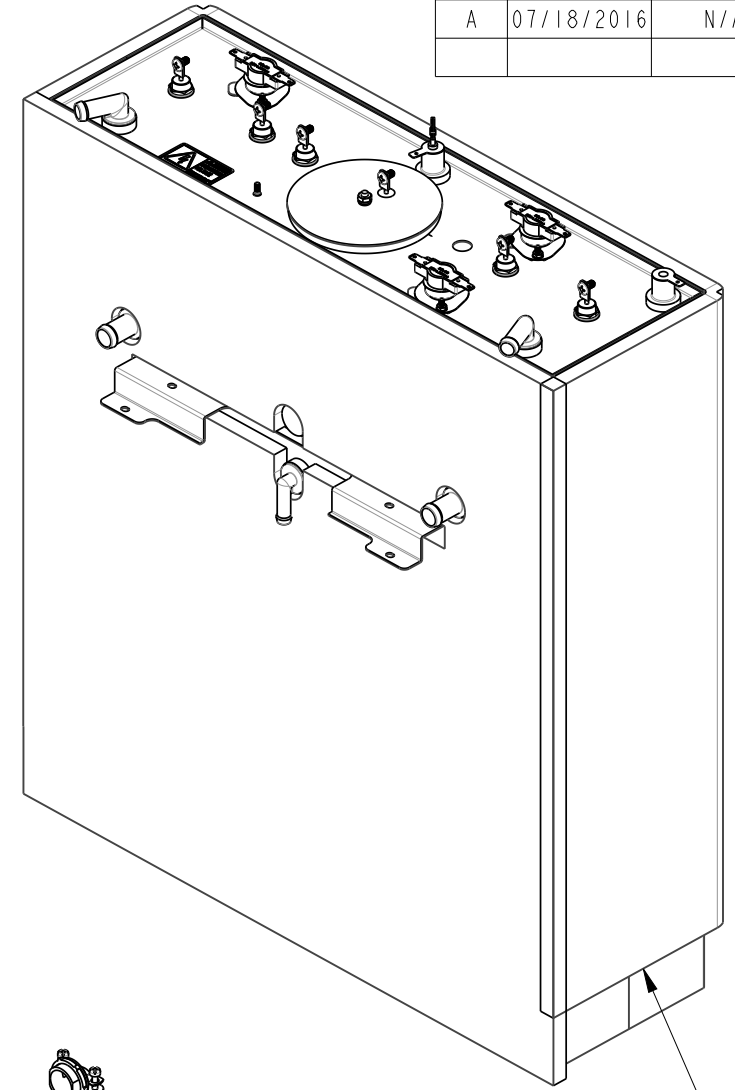
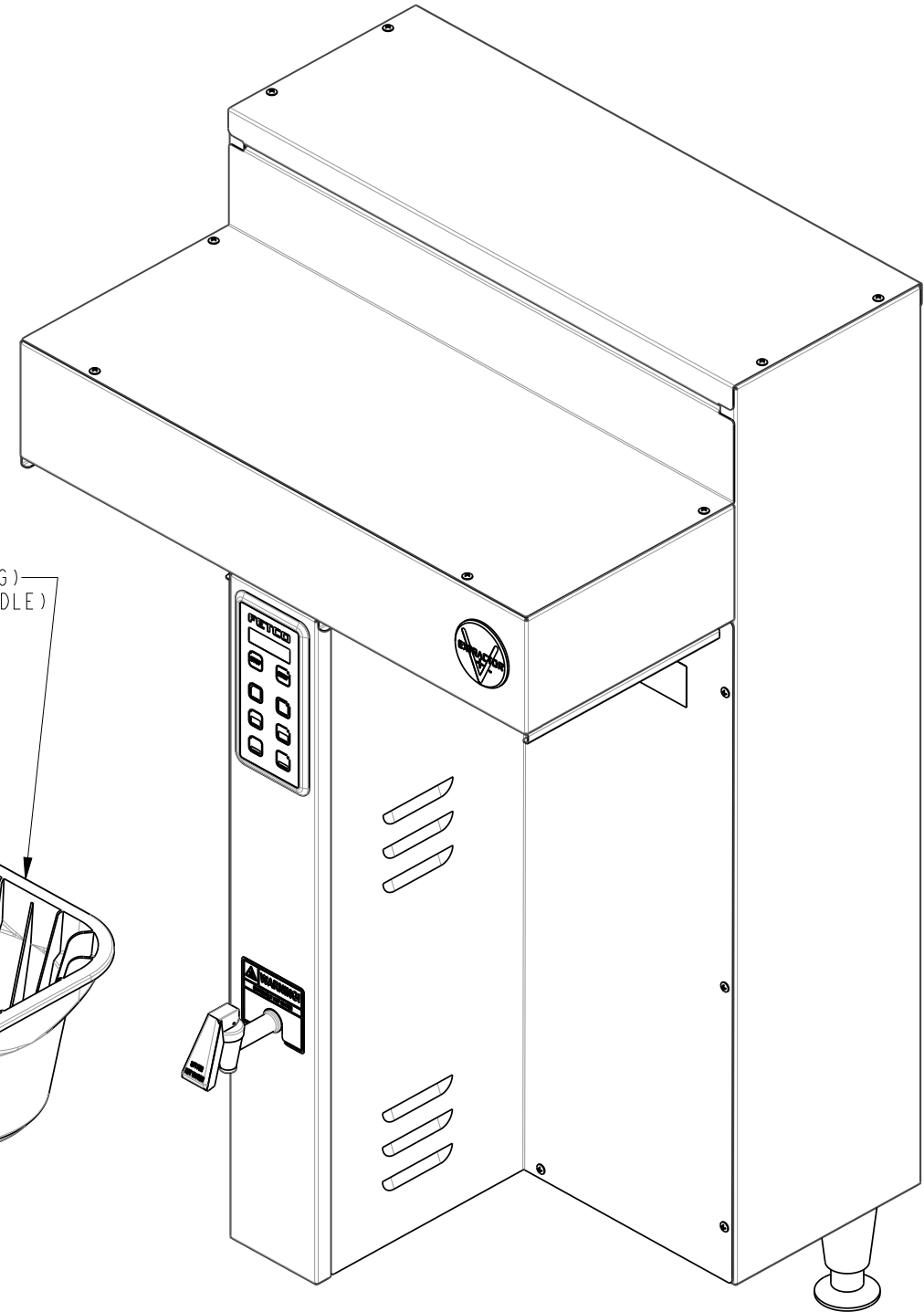
E115251ROYAL

IDENTICAL TO 1101.00339.00 EXCEPT AS NOTED

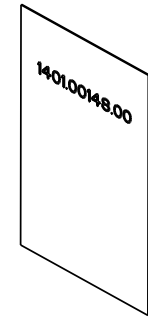
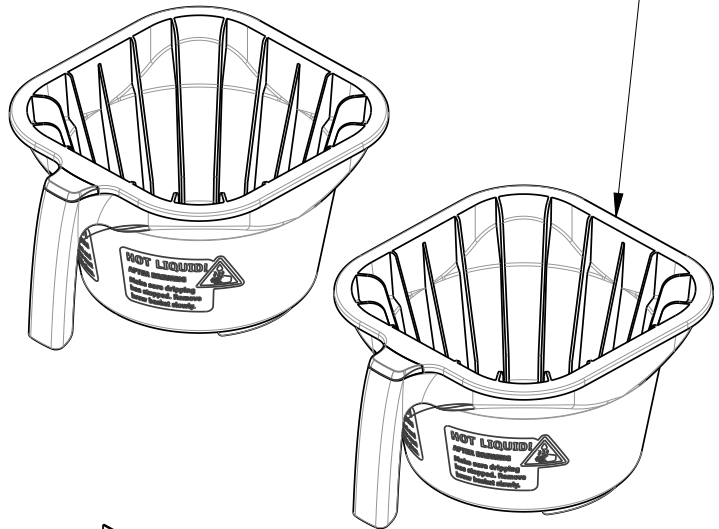
| TOLERANCES | | FETCO® FOOD EQUIPMENT TECHNOLOGIES COMPANY | |
|---------------------------------------|--------------|---|--------------------|
| UNLESS OTHERWISE SPECIFIED | | 600 ROSE ROAD, LAKE ZURICH, IL 60047, USA PHONE: (800) 338-2699 FAX: (847) 719-3001 E-MAIL: engineering@fetco.com www.fetco.com | |
| ALL DIMENSIONS IN INCHES | | DRAWING NAME: CBS-1152 XVⁱ, 1 or 3Ph, 2 or 3G, 3 X 3kW/240VAC, 208-240VAC, ROYAL CUP | |
| ALL DECIMAL ± .005" ANGULAR ± 1/2° | THIRD-ANGLE | CREATED BY: DK | DATE 07/18/2016 |
| | | DRAWING BY: DK | SCALE 0.188 |
| | | APP'D BY: AG | SHEETS 4 of 13 |
| MATERIAL N/A | GAUGE N/A | DRAWING NO. E115251ROYAL | |
| | | REVISION A | |
| | | FINISH N/A | |

REVISIONS

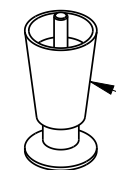
| REV | DATE | ECO NO | DESCRIPTION | BY: | A |
|-----|------------|--------|-------------|-----|---|
| A | 07/18/2016 | N/A | ORIGINAL | DK | |



SKU # E115251 - 2X B015280BN2 (BROWN PLUG)
 SKU # E115251M - 2X B002280B1 (BLACK HANDLE)
 BB ASSEMBLY, 16" x 6", Ø.280" HOLE



1401.00148.00
 WIRING, CBS-1152 XV+
 (L1, L2, L3 + GND), 3 HEATERS, UL



3X 1073.00007.00
 LEG, FLANGE FOOT,
 4" HIGH



1086.00008.00
 CONNECTOR CLAMP



1402.00053.01
 HARNESS HIGH AMP,
 CBS-1152 XV+

1104.00074.01
 TANK ASSEMBLY, CBS-1152 XV+
 3 x 5kW/240VAC

E115252 & E115252M
 (IDENTICAL TO 1101.00339.00 EXCEPT AS NOTED)

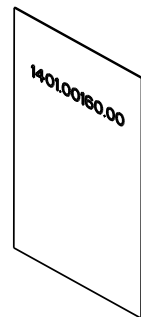
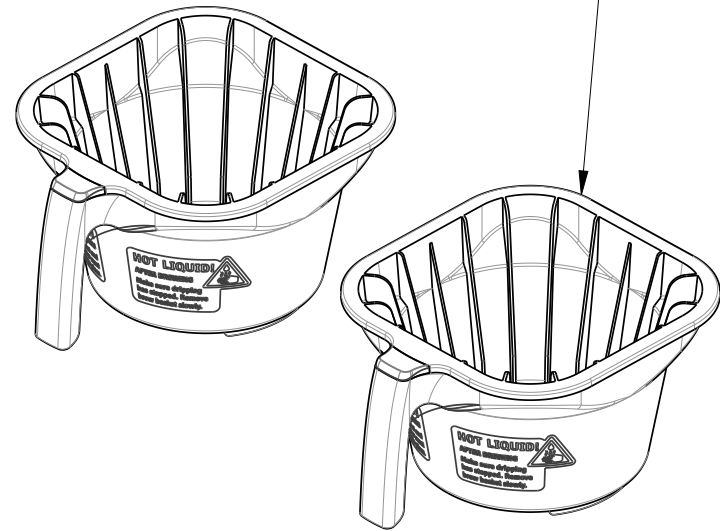
PROPRIETARY AND CONFIDENTIAL.
 THE INFORMATION CONTAINED IN THIS DRAWING IS THE SOLE PROPERTY OF FETCO.
 ANY REPRODUCTION IN PART OR AS A WHOLE WITHOUT THE WRITTEN PERMISSION OF FETCO IS PROHIBITED.

| TOLERANCES | | FETCO® FOOD EQUIPMENT TECHNOLOGIES COMPANY | |
|---------------------------------------|--------------|---|--------------------|
| UNLESS OTHERWISE SPECIFIED | | 600 ROSE ROAD, LAKE ZURICH, IL 60047, USA PHONE: (800) 338-2699 FAX: (847) 719-3001 E-MAIL: engineering@fetco.com www.fetco.com | |
| ALL DIMENSIONS IN INCHES | | DRAWING NAME: CBS-1152 XV[†], 1 or 3Ph, 2 or 3IG, 3 X 5kW/240VAC, 208-240VAC | |
| ALL DECIMAL ± .005" ANGULAR ± 1/2° | THIRD-ANGLE | CREATED BY: DK | DATE 07/18/2016 |
| | | DRAWING BY: DK | SCALE 0.188 |
| | | APP'D BY: AG | SHEETS 5 of 13 |
| MATERIAL N/A | GAUGE N/A | DRAWING NO. E115252 | |
| | | REVISION A | |
| | | FINISH N/A | |

REVISIONS

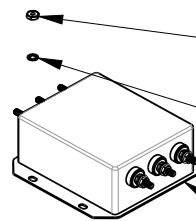
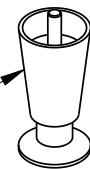
| REV | DATE | ECO NO | DESCRIPTION | BY: | A |
|-----|------------|--------|-------------|-----|---|
| A | 07/18/2016 | N/A | ORIGINAL | DK | |

SKU # E115261 - 2X B015280BN2 (BROWN PLUG)
 SKU # E115261M - 2X B002280B1 (BLACK HANDLE)
 BB ASSEMBLY, 16" x 6", Ø.280" HOLE

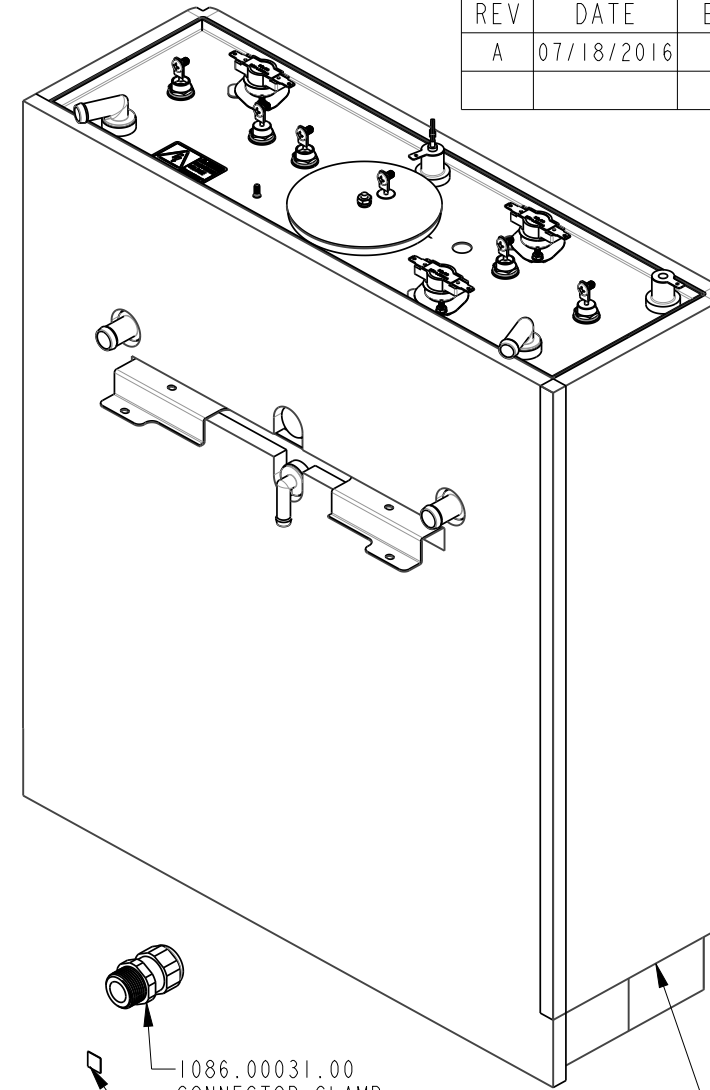
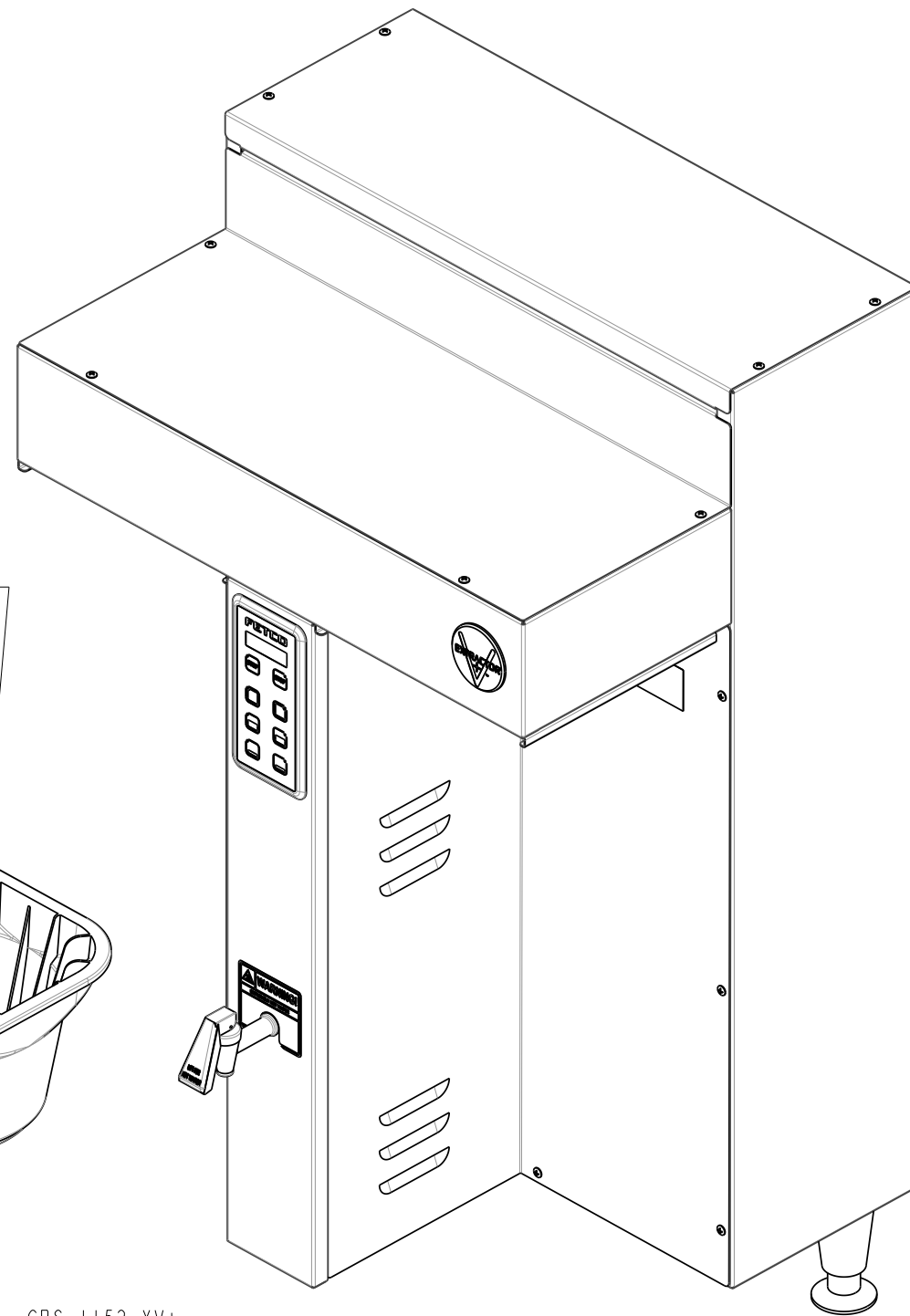


1401.00160.00
 WIRING DIAGRAM, CBS-1152 XV+
 3L, N, PE, 3 HEATERS

3X 1073.00007.00
 LEG, FLANGE FOOT,
 4" HIGH



4X 1084.00012.00
 #6-32 HEX NUT
 4X 1083.00009.00
 #6 INT. TOOTH WASHER
 1052.00027.00
 EMI FILTER THREE LINE 30A,
 250/440VAC



1086.00031.00
 CONNECTOR CLAMP
 1044.00013.00
 LABEL EQUIPOTENTIALITY, CE
 1084.00006.00
 #8-32 HEX NUT
 1083.00011.00
 #8 INT. TOOTH WASHER
 1065.00009.00
 GROUND LUG CONNECTOR
 1402.00052.01
 HARNESS HIGH AMP CE,
 CBS-1152 XV+

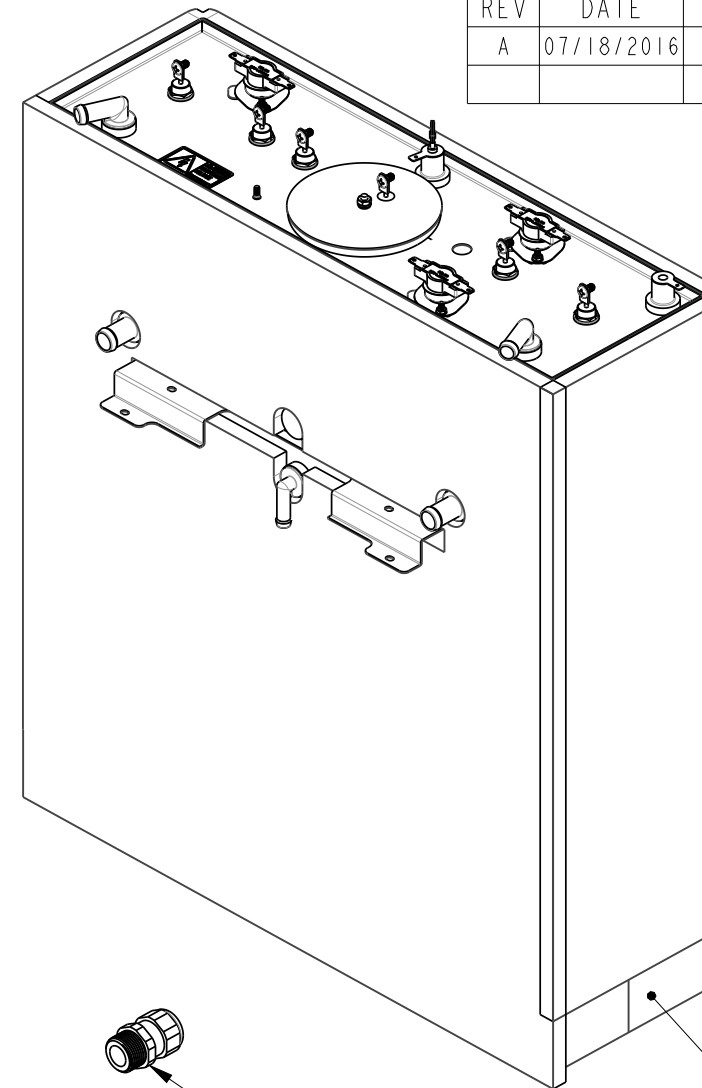
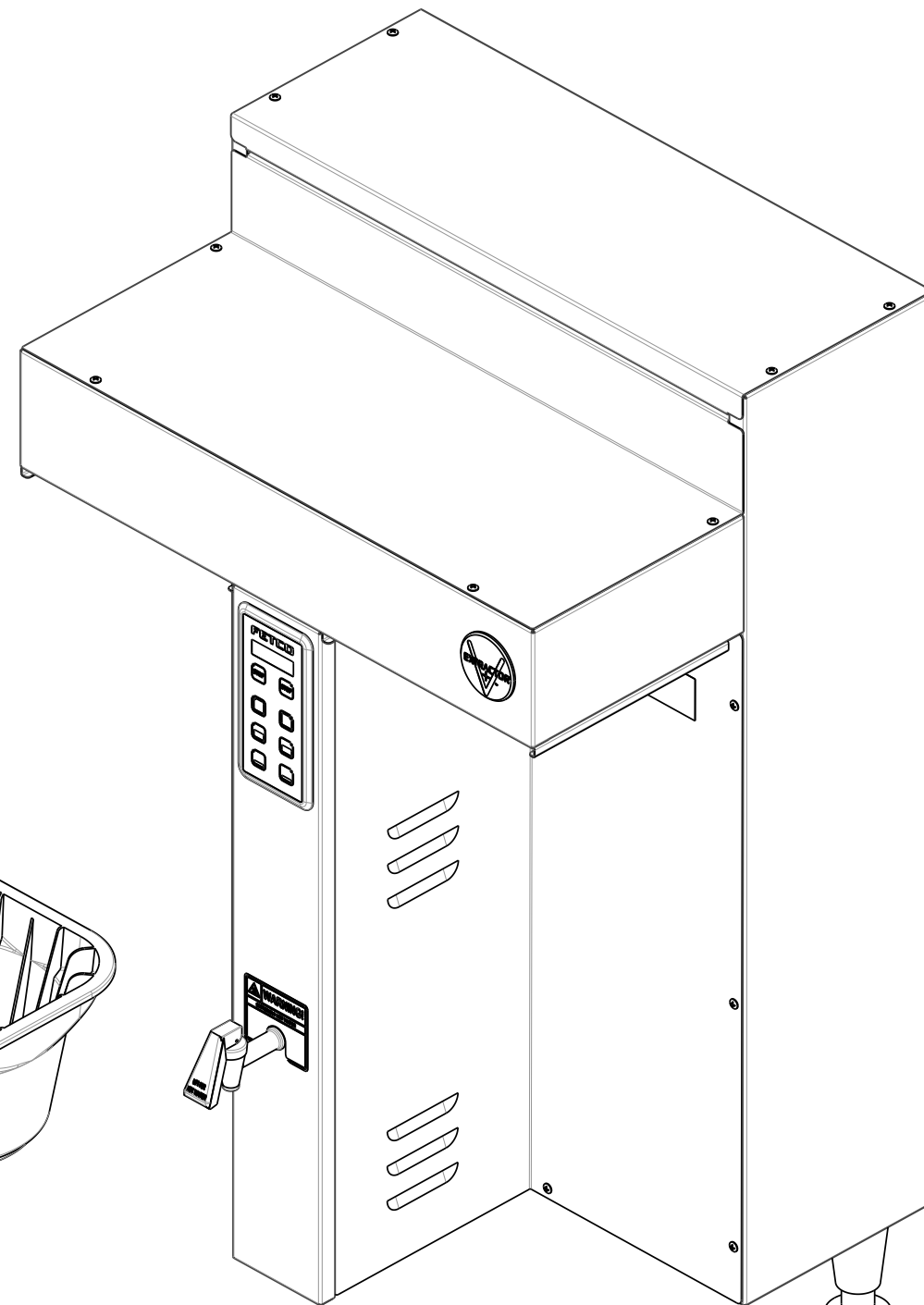
1104.00062.01
 TANK ASSEMBLY, CBS-1152 XV+
 3 x 3kW/240VAC

E115261 & E115261M
 IDENTICAL TO 1101.00339.00 EXCEPT AS NOTED

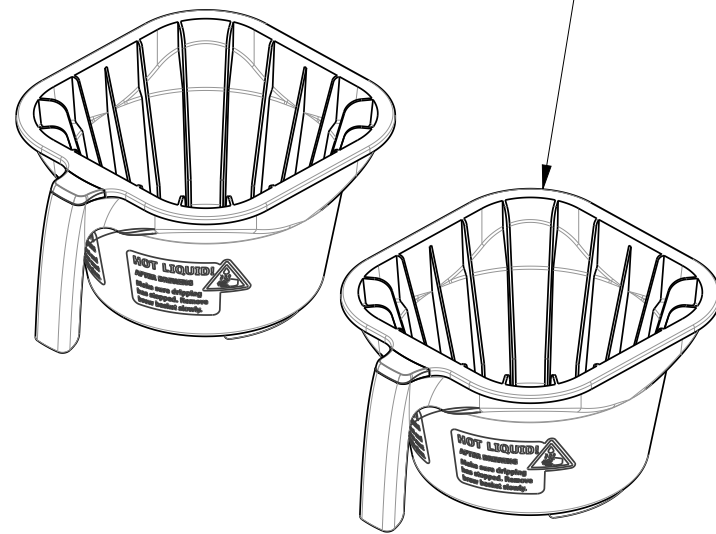
| TOLERANCES | | FETCO® FOOD EQUIPMENT TECHNOLOGIES COMPANY | |
|---------------------------------------|--------------|---|--------------------|
| UNLESS OTHERWISE SPECIFIED | | 600 ROSE ROAD, LAKE ZURICH, IL 60047, USA PHONE: (800) 338-2699 FAX: (847) 719-3001 E-MAIL: engineering@fetco.com www.fetco.com | |
| ALL DIMENSIONS IN INCHES | | DRAWING NAME: CBS-1152 XV+, 3Ph, 3L,N,PE, 3 X 3.0kW/240VAC, 230/400VAC, CE | |
| ALL DECIMAL ± .005" ANGULAR ± 1/2° | THIRD-ANGLE | CREATED BY: DK | DATE 07/18/2016 |
| | | DRAWING BY: DK | SCALE 0.188 |
| | | APP'D BY: AG | SHEETS 6 of 13 |
| MATERIAL N/A | GAUGE N/A | DRAWING NO. E115261 | |
| | | REVISION A | |
| | | FINISH N/A | |

REVISIONS

| REV | DATE | ECO NO | DESCRIPTION | BY: | A |
|-----|------------|--------|-------------|-----|---|
| A | 07/18/2016 | N/A | ORIGINAL | DK | |

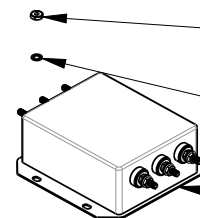
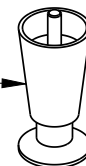


SKU # E115262 - 2X B015280BN2 (BROWN PLUG)
 SKU # E115262M - 2X B002280B1 (BLACK HANDLE)
 BB ASSEMBLY, 16" x 6", Ø.280" HOLE

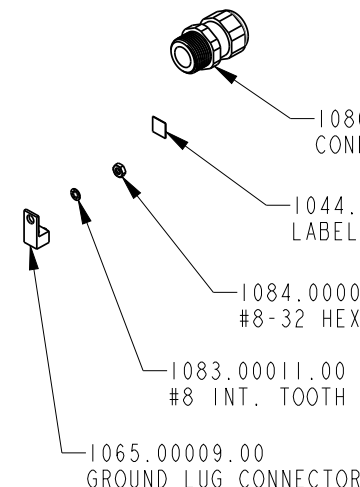


1401.00160.00
 WIRING DIAGRAM, CBS-1152 XV+
 3L, N, PE, 3 HEATERS

3X 1073.00007.00
 LEG, FLANGE FOOT,
 4" HIGH

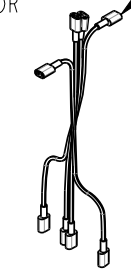


4X 1084.00012.00
 #6-32 HEX NUT
 4X 1083.00009.00
 #6 INT. TOOTH WASHER
 1052.00027.00
 EMI FILTER, THREE LINE 30A,
 250/440VAC



1086.00031.00
 CONNECTOR CLAMP
 1044.00013.00
 LABEL, EQUIPOTENTIALITY, CE
 1084.00006.00
 #8-32 HEX NUT
 1083.00011.00
 #8 INT. TOOTH WASHER
 1065.00009.00
 GROUND LUG CONNECTOR

1402.00052.01
 HARNESS HIGH AMP CE,
 CBS-1152 XV+



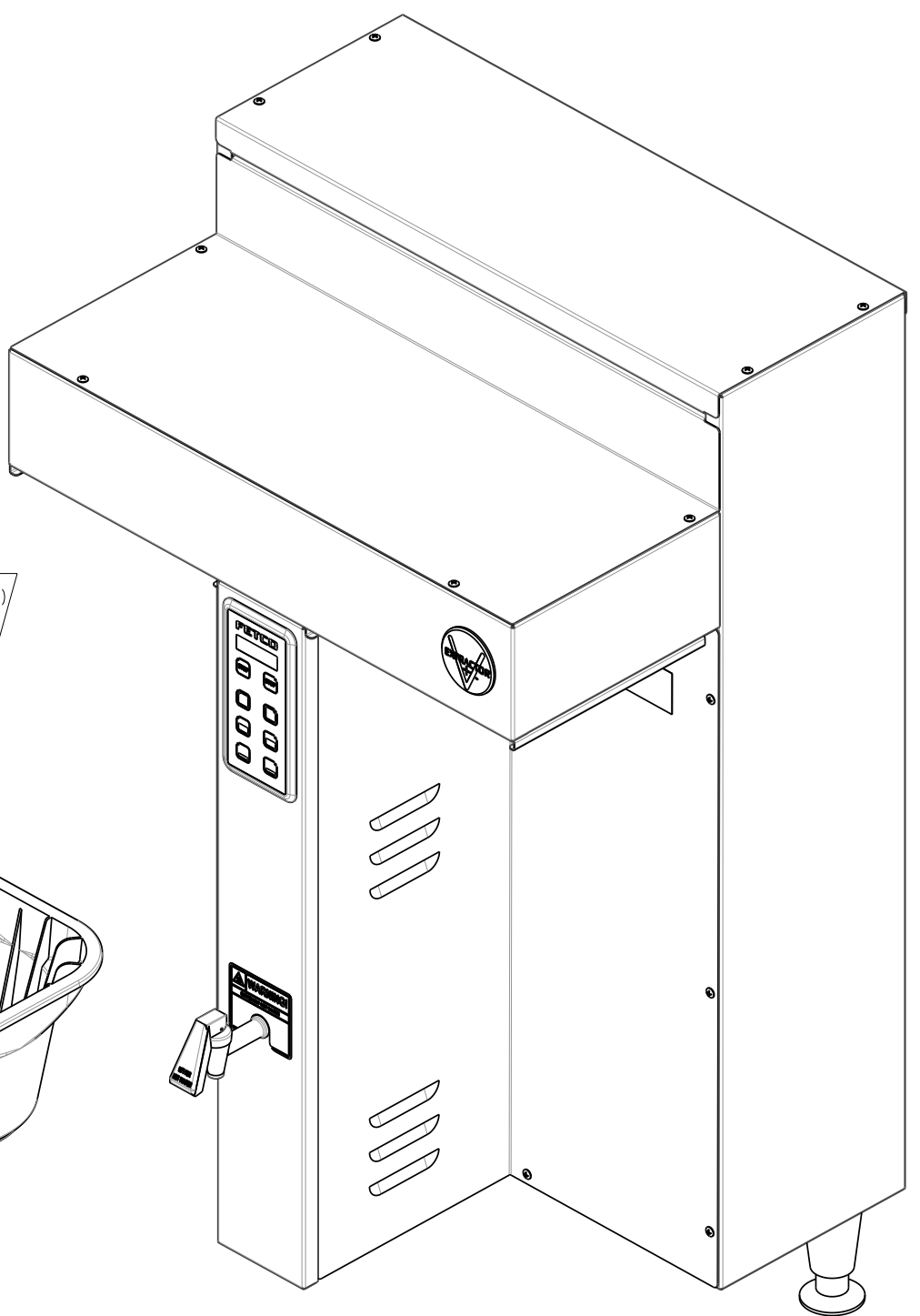
1104.00074.01
 TANK ASSEMBLY, CBS-1152 XV+
 3 x 5kW/240VAC

E115262 & E115262M
 (IDENTICAL TO 1101.00339.00 EXCEPT AS NOTED)

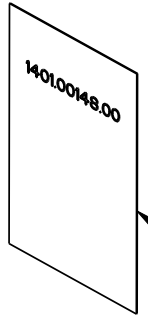
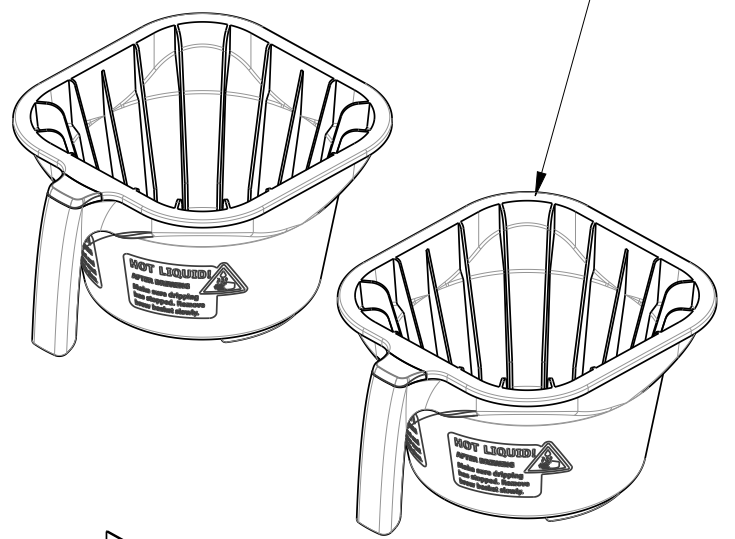
| TOLERANCES | | FETCO® FOOD EQUIPMENT TECHNOLOGIES COMPANY | |
|----------------------------|------------------|---|----------------|
| UNLESS OTHERWISE SPECIFIED | | 600 ROSE ROAD, LAKE ZURICH, IL 60047, USA PHONE: (800) 338-2699 FAX: (847) 719-3001 E-MAIL: engineering@fetco.com www.fetco.com | |
| ALL DIMENSIONS IN INCHES | | DRAWING NAME: CBS-1152 XV+, 3Ph, 3L,N,PE, 3 X 5.0kW/240VAC, 230/400VAC, CE | |
| ALL DECIMAL ± .005" | ANGULAR ± 1/2° | THIRD-ANGLE | |
| CREATED BY: DK | DATE: 07/18/2016 | DRAWING NO.: | E115262 |
| DRAWING BY: DK | SCALE: 0.188 | SHEETS: | 7 of 13 |
| APP'D BY: AG | | REVISION: | A |
| MATERIAL: N/A | GAUGE: N/A | FINISH: | N/A |

| REVISIONS | | | | |
|-----------|------------|--------|-------------|-----|
| REV | DATE | ECO NO | DESCRIPTION | BY: |
| A | 07/18/2016 | N/A | ORIGINAL | DK |

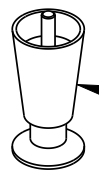
A



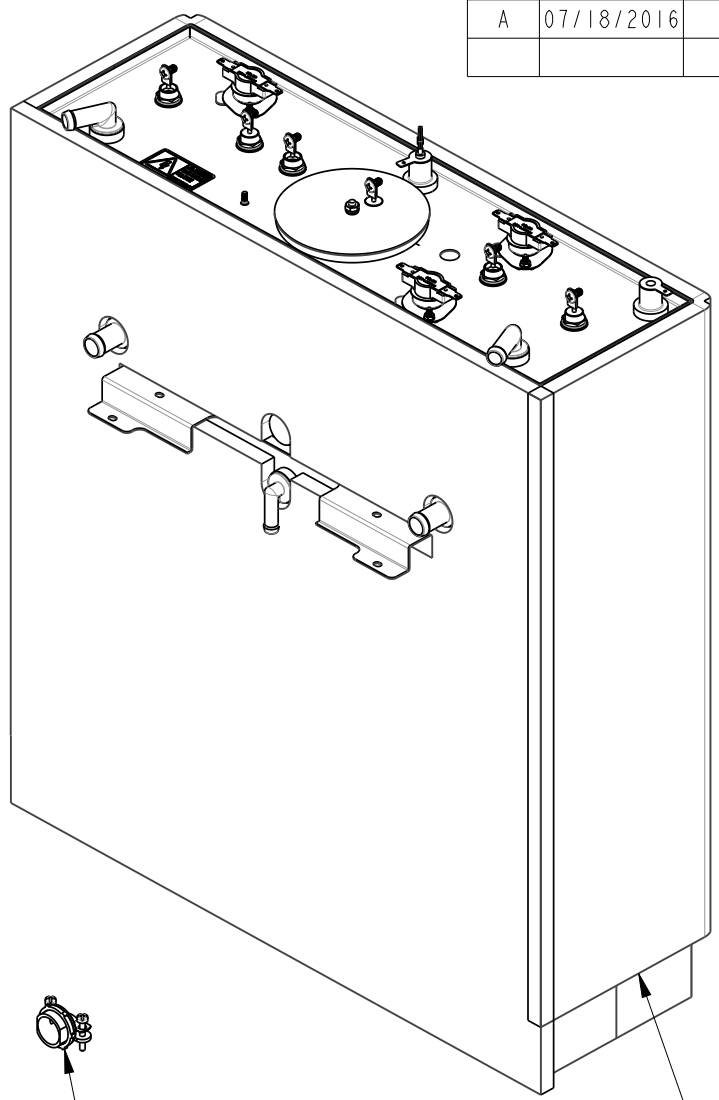
SKU # E115280 - 2X B015280BN2 (BROWN PLUG)
 SKU # E115280M - 2X B002280B1 (BLACK HANDLE)
 BB ASSEMBLY, 16" x 6", Ø.280" HOLE



1401.00148.00
 WIRING, CBS-1152 XV+
 (L1, L2, L3 + GND), 3 HEATERS, UL

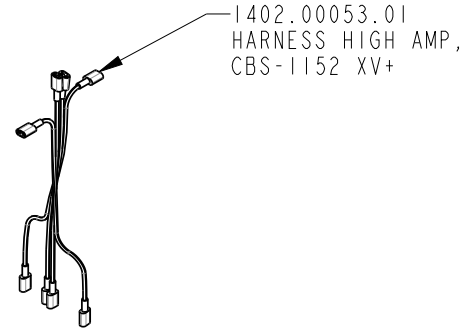


3X 1073.00007.00
 LEG, FLANGE FOOT,
 4" HIGH



1086.00008.00
 CONNECTOR CLAMP

1104.00062.01
 TANK ASSEMBLY, CBS-1152 XV+
 3 x 3kW/240VAC



1402.00053.01
 HARNESS HIGH AMP,
 CBS-1152 XV+

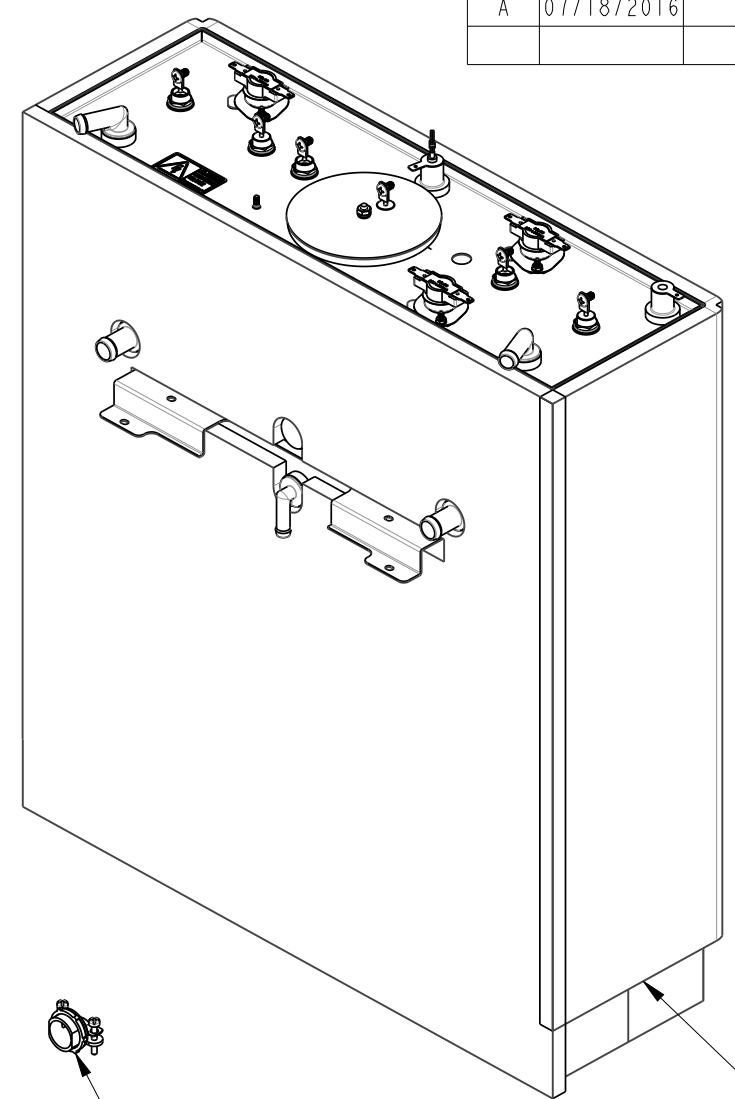
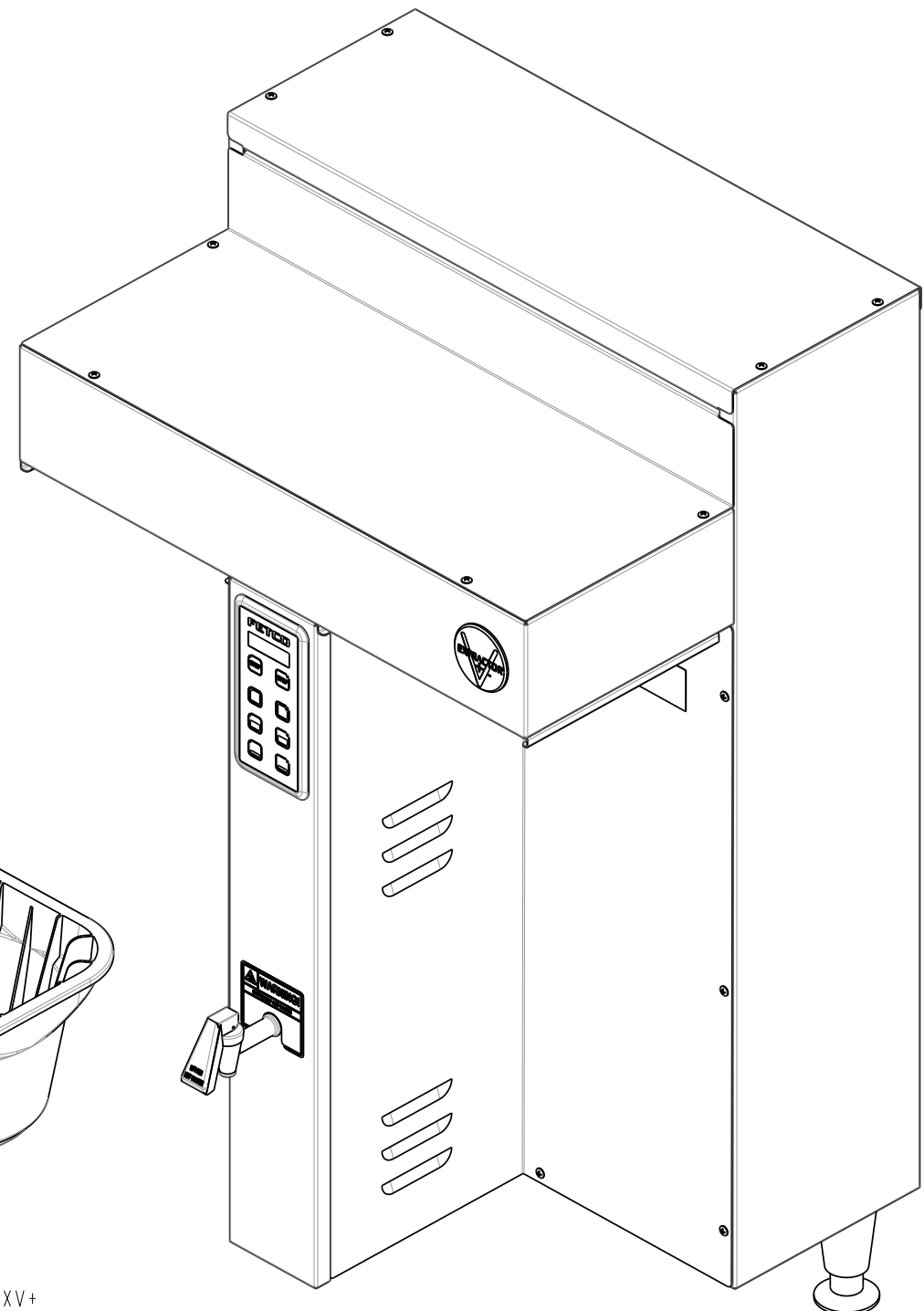
E115280 & E115280M
 (IDENTICAL TO 1101.00339.00 EXCEPT AS NOTED)

| | | | |
|---------------------------------------|---------------|---|----------------|
| TOLERANCES | | FETCO FOOD EQUIPMENT TECHNOLOGIES COMPANY | |
| UNLESS OTHERWISE SPECIFIED | | 600 ROSE ROAD, LAKE ZURICH, IL 60047, USA | |
| ALL DIMENSIONS IN INCHES | | PHONE: (800) 338-2699 FAX: (847) 719-3001 | |
| ALL DECIMAL ± .005" ANGULAR ± 1/2° | | E-MAIL: engineering@fetco.com www.fetco.com | |
| THIRD-ANGLE | DRAWING NAME: | CBS-1152 XV+, 3Ph, 3LG, 3 X 3.0kW/240VAC, 200VAC, JAPAN | |
| | CREATED BY: | DK | DRAWING NO. |
| | DATE: | 07/18/2016 | E115280 |
| | DRAWING BY: | DK | SCALE |
| | APP'D BY: | AG | 0.188 |
| | | | SHEETS |
| | | | 8 of 13 |
| | | | REVISION |
| | | | A |
| MATERIAL | GAUGE | FINISH | |
| N/A | N/A | N/A | |

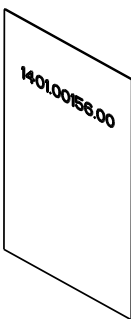
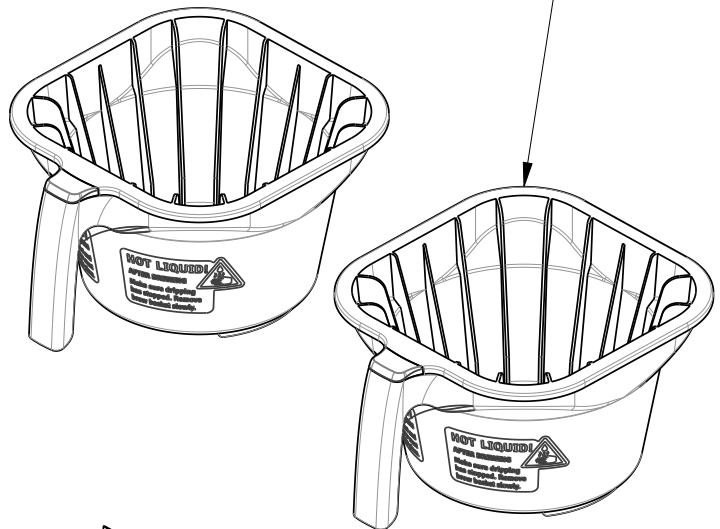
PROPRIETARY AND CONFIDENTIAL.
 THE INFORMATION CONTAINED IN THIS DRAWING IS THE SOLE PROPERTY OF FETCO.
 ANY REPRODUCTION IN PART OR AS A WHOLE WITHOUT THE WRITTEN PERMISSION OF FETCO IS PROHIBITED.

| REVISIONS | | | | |
|-----------|------------|--------|-------------|-----|
| REV | DATE | ECO NO | DESCRIPTION | BY: |
| A | 07/18/2016 | N/A | ORIGINAL | DK |

A

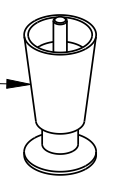


SKU * E115290 - 2X B015280BN2 (BROWN PLUG)
 SKU * E115290M - 2X B002280B1 (BLACK HANDLE)
 BB ASSEMBLY, 16" x 6", Ø.280" HOLE



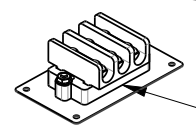
1401.00156.00
 WIRING, CBS-1152 XV+
 L1, L2, L3, N+GND, 3 HEATERS, EXPORT

3X 1073.00007.00
 LEG, FLANGE FOOT,
 4" HIGH



4X 1084.00012.00
 #6-32 HEX NUT

4X 1083.00009.00
 #6 INT. TOOTH WASHER



1102.00284.00
 ASSEMBLY, TERMINAL BRACKET

1086.00008.00
 CONNECTOR CLAMP

1104.00062.01
 TANK ASSEMBLY, CBS-1152 XV+
 3 x 3kW/240VAC

1402.00052.01
 HARNESS HIGH AMP CE,
 CBS-1152 XV+

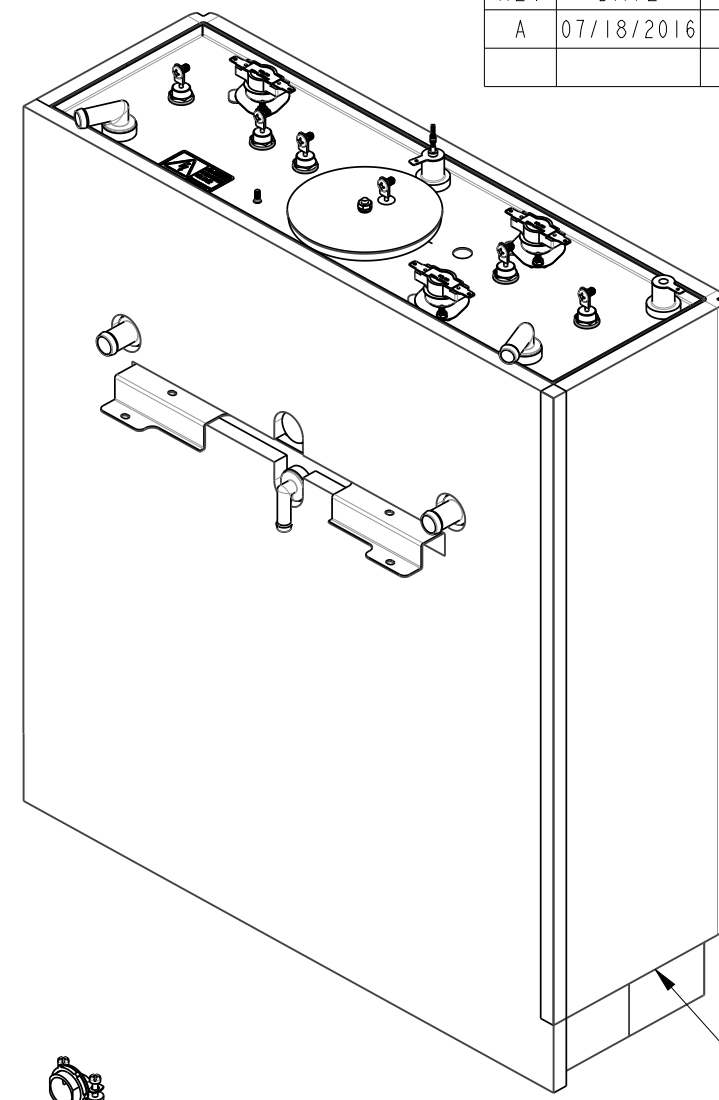
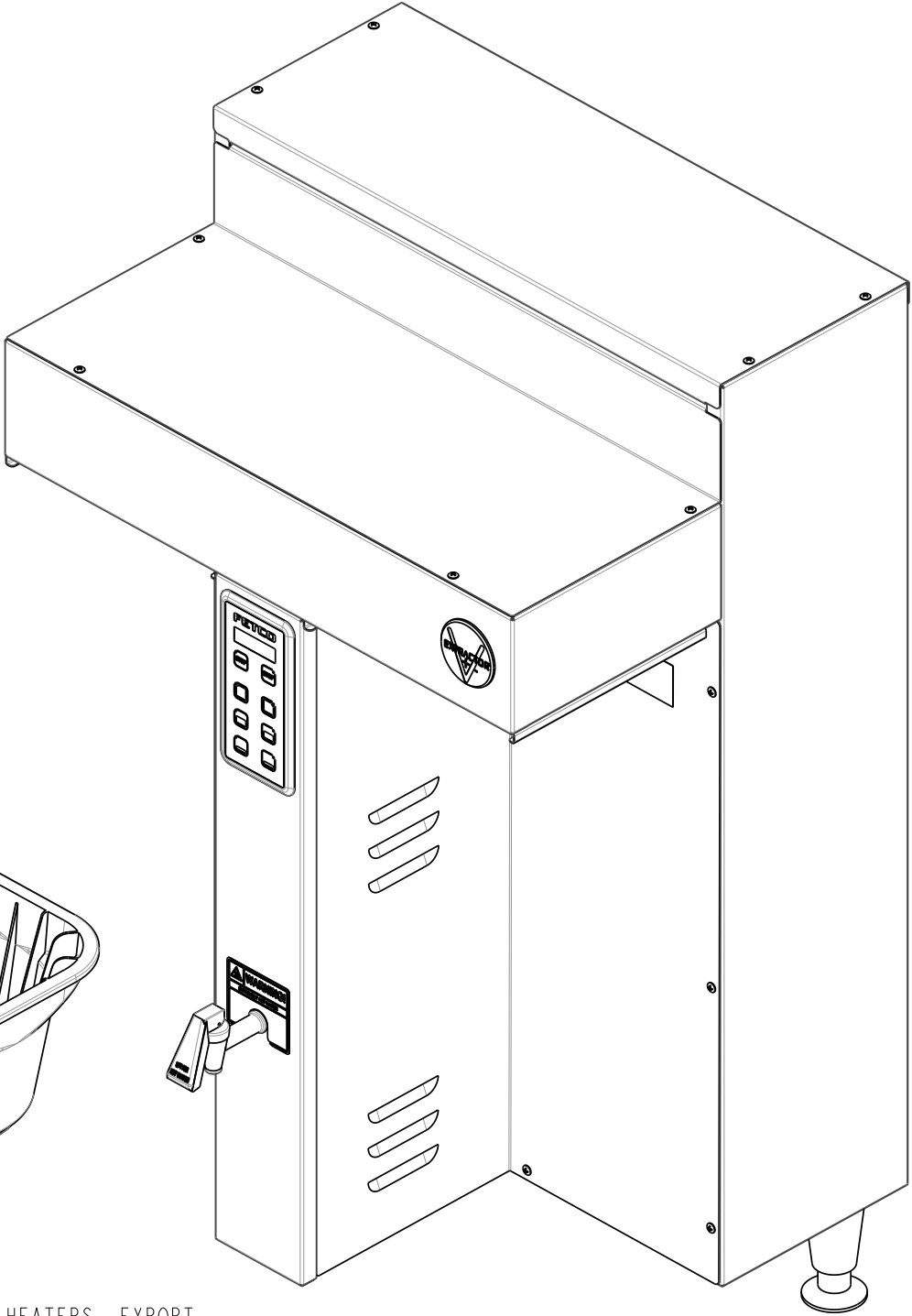
E115290 & E115290M
 (IDENTICAL TO 1101.00339.00 EXCEPT AS NOTED)

| TOLERANCES | | FETCO® FOOD EQUIPMENT TECHNOLOGIES COMPANY | |
|----------------------------|----------------|---|----------------------------|
| UNLESS OTHERWISE SPECIFIED | | 600 ROSE ROAD, LAKE ZURICH, IL 60047, USA PHONE: (800) 338-2699 FAX: (847) 719-3001 E-MAIL: engineering@fetco.com www.fetco.com | |
| ALL DIMENSIONS IN INCHES | | DRAWING NAME: CBS-1152 XV^t, 3Ph, 4-G, 3 X 3.0kW/240VAC, 220/380-240/415VAC, INTL | |
| ALL DECIMAL ± .005" | CREATED BY: DK | DATE: 07/18/2016 | DRAWING NO. E115290 |
| ANGULAR ± 1/2° | DRAWING BY: DK | SCALE: 0.188 | REVISION A |
| THIRD-ANGLE | APP'D BY: AG | SHEETS: 9 of 13 | |
| MATERIAL: N/A | GAUGE: N/A | FINISH: N/A | |

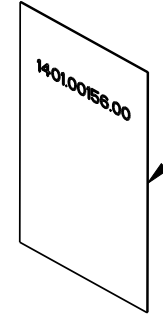
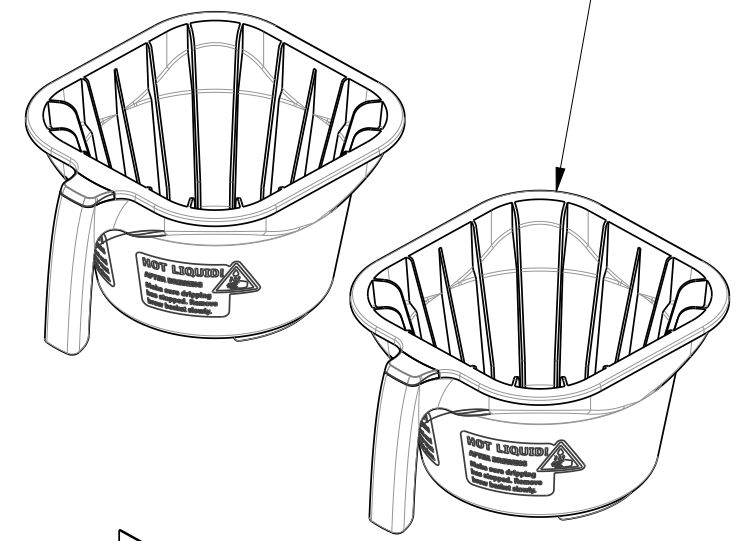
PROPRIETARY AND CONFIDENTIAL.
 THE INFORMATION CONTAINED IN THIS DRAWING IS THE SOLE PROPERTY OF FETCO.
 ANY REPRODUCTION IN PART OR AS A WHOLE WITHOUT THE WRITTEN PERMISSION OF FETCO IS PROHIBITED.

| REVISIONS | | | | |
|-----------|------------|--------|-------------|-----|
| REV | DATE | ECO NO | DESCRIPTION | BY: |
| A | 07/18/2016 | N/A | ORIGINAL | DK |

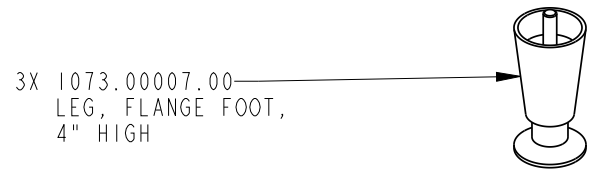
A



SKU # E115291 - 2X B015280BN2 (BROWN PLUG)
 SKU # E115291M - 2X B002280B1 (BLACK HANDLE)
 BB ASSEMBLY, 16" x 6", Ø.280" HOLE



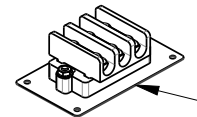
1401.00156.00
 WIRING, CBS-1152 XV+
 L1, L2, L3, N+GND, 3 HEATERS, EXPORT



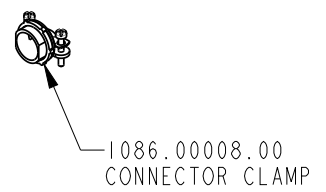
3X 1073.00007.00
 LEG, FLANGE FOOT,
 4" HIGH

4X 1084.00012.00
 #6-32 HEX NUT

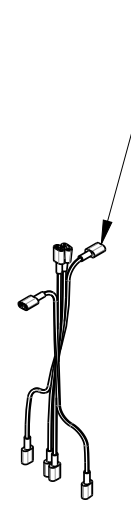
4X 1083.00009.00
 #6 INT. TOOTH WASHER



1102.00284.00
 ASSEMBLY, TERMINAL BRACKET



1086.00008.00
 CONNECTOR CLAMP



1402.00052.01
 HARNESS HIGH AMP CE,
 CBS-1152 XV+

1104.00074.01
 TANK ASSEMBLY, CBS-1152 XV+
 3 x 5kW/240VAC

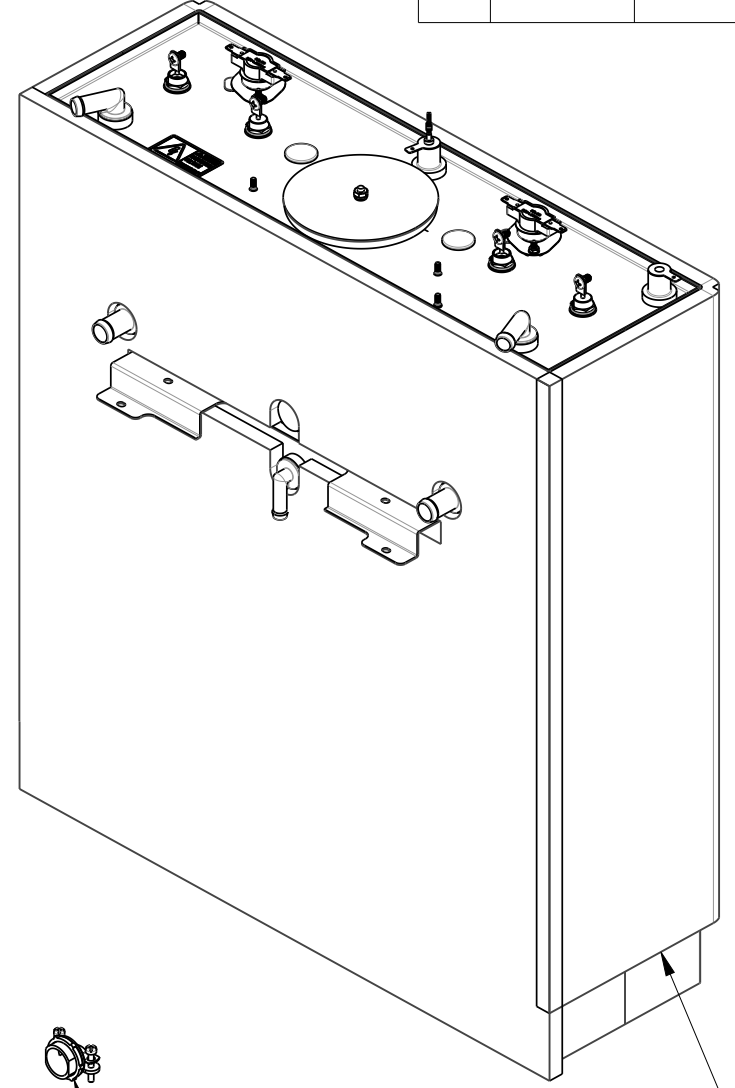
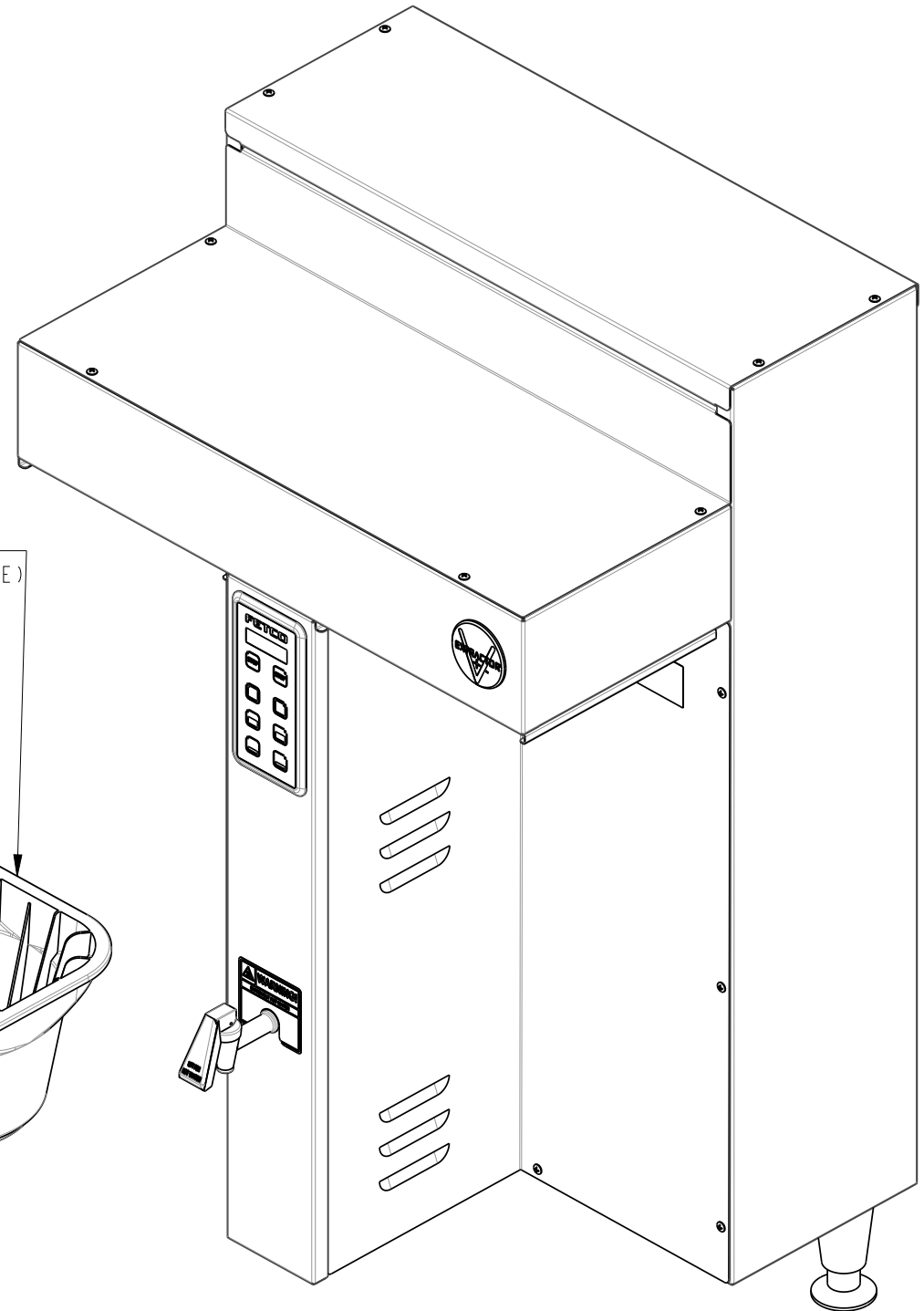
E115291 & E115291M
 (IDENTICAL TO 1101.00339.00 EXCEPT AS NOTED)

PROPRIETARY AND CONFIDENTIAL.
 THE INFORMATION CONTAINED IN THIS DRAWING IS THE SOLE PROPERTY OF FETCO.
 ANY REPRODUCTION IN PART OR AS A WHOLE WITHOUT THE WRITTEN PERMISSION OF FETCO IS PROHIBITED.

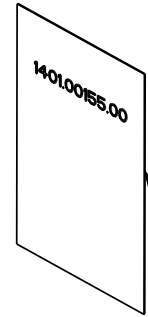
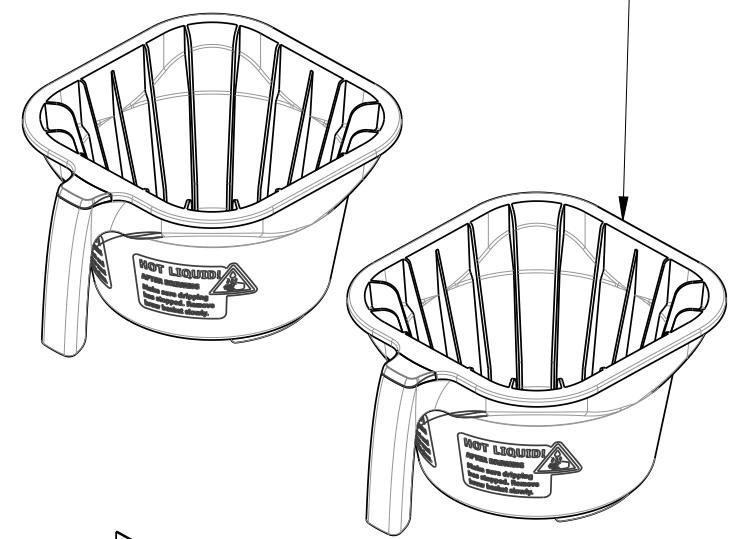
| TOLERANCES | | FETCO® FOOD EQUIPMENT TECHNOLOGIES COMPANY | |
|----------------------------|----------------|---|----------------------------|
| UNLESS OTHERWISE SPECIFIED | | 600 ROSE ROAD, LAKE ZURICH, IL 60047, USA PHONE: (800) 338-2699 FAX: (847) 719-3001 E-MAIL: engineering@fetco.com www.fetco.com | |
| ALL DIMENSIONS IN INCHES | | DRAWING NAME: CBS-1152 XV+, 3Ph, 4-G, 3 X 5.0kW/240VAC, 220/380-240/415VAC, INTL | |
| ALL DECIMAL ± .005" | CREATED BY: DK | DATE: 07/18/2016 | DRAWING NO. E115291 |
| ANGULAR ± 1/2° | DRAWING BY: DK | SCALE: 0.188 | REVISION A |
| THIRD-ANGLE | APP'D BY: AG | SHEETS: 10 of 13 | |
| MATERIAL: N/A | GAUGE: N/A | FINISH: N/A | |

| REVISIONS | | | | |
|-----------|------------|--------|-------------|-----|
| REV | DATE | ECO NO | DESCRIPTION | BY: |
| A | 07/18/2016 | N/A | ORIGINAL | DK |

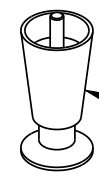
A



SKU # E115292 - 2X B015280BN2 (BROWN PLUG)
 SKU # E115292M - 2X B002280BI (BLACK HANDLE)
 BB ASSEMBLY, 16" x 6", Ø.280" HOLE



1401.00155.00
 WIRING, CBS-1152 XV+
 LI, N + GND, 2 HEATERS, EXPORT



3X 1073.00007.00
 LEG, FLANGE FOOT,
 4" HIGH



1086.00008.00
 CONNECTOR CLAMP



1402.00053.01
 HARNESS HIGH AMP,
 CBS-1152 XV+

1104.00080.01
 TANK ASSEMBLY, CBS-1152 XV+
 2 x 3kW/240VAC

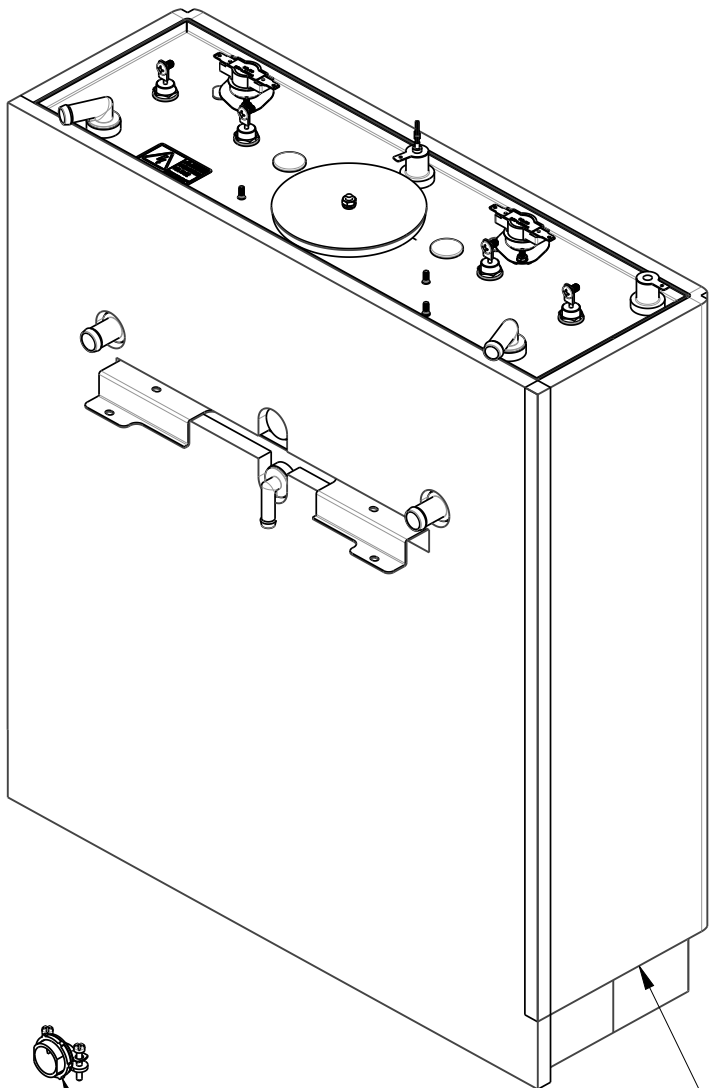
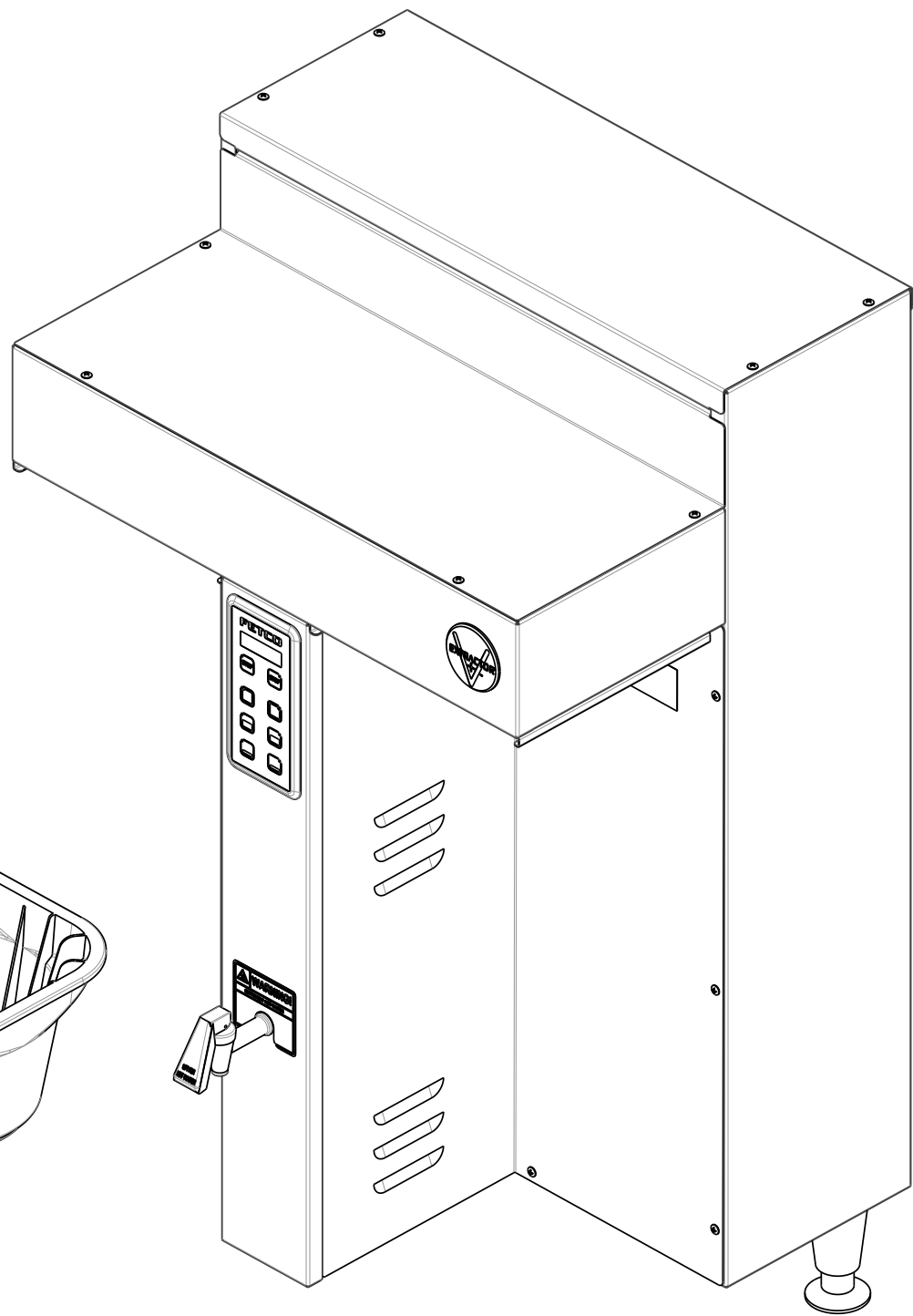
E115292 & E115292M
 (IDENTICAL TO 1101.00339.00 EXCEPT AS NOTED)

| TOLERANCES | | FETCO® FOOD EQUIPMENT TECHNOLOGIES COMPANY | |
|---------------------------------------|--------------|---|--------------------|
| UNLESS OTHERWISE SPECIFIED | | 600 ROSE ROAD, LAKE ZURICH, IL 60047, USA PHONE: (800) 338-2699 FAX: (847) 719-3001 E-MAIL: engineering@fetco.com www.fetco.com | |
| ALL DIMENSIONS IN INCHES | | DRAWING NAME: CBS-1152 XV+, 1Ph, 2IG, 2 X 3.0kW/240VAC, 200-240VAC, INTL | |
| ALL DECIMAL ± .005" ANGULAR ± 1/2° | THIRD-ANGLE | CREATED BY: DK | DATE 07/18/2016 |
| | | DRAWING BY: DK | SCALE 0.188 |
| | | APP'D BY: AG | SHEETS 11 of 13 |
| MATERIAL N/A | GAUGE N/A | DRAWING NO. E115292 | |
| | | FINISH N/A | |

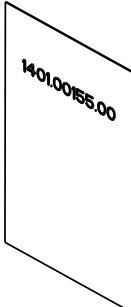
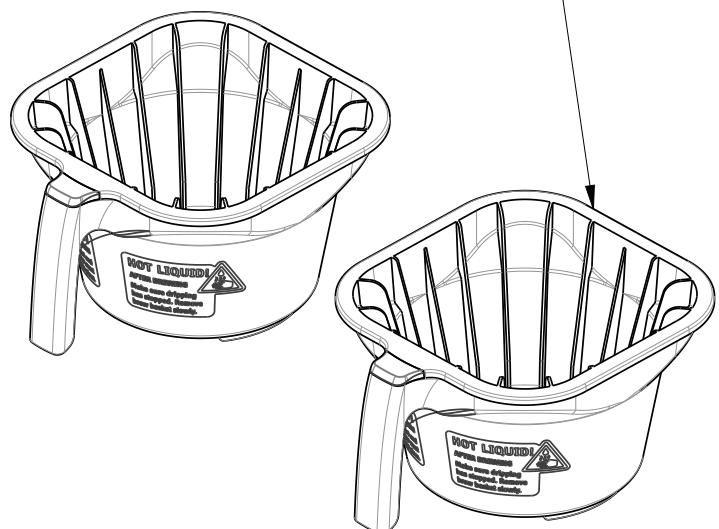
PROPRIETARY AND CONFIDENTIAL.
 THE INFORMATION CONTAINED IN THIS DRAWING IS THE SOLE PROPERTY OF FETCO.
 ANY REPRODUCTION IN PART OR AS A WHOLE WITHOUT THE WRITTEN PERMISSION OF FETCO IS PROHIBITED.

| REVISIONS | | | | |
|-----------|------------|--------|-------------|-----|
| REV | DATE | ECO NO | DESCRIPTION | BY: |
| A | 07/18/2016 | N/A | ORIGINAL | DK |

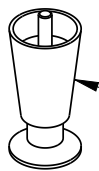
A



SKU # E115294 - 2X B015280BN2 (BROWN PLUG)
 SKU # E115294M - 2X B002280B1 (BLACK HANDLE)
 BB ASSEMBLY, 16" x 6", Ø.280" HOLE



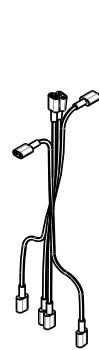
1401.00155.00
 WIRING, CBS-1152 XV+
 LI, N + GND, 2 HEATERS, EXPORT



3X 1073.00007.00
 LEG, FLANGE FOOT,
 4" HIGH



1086.00008.00
 CONNECTOR CLAMP



1402.00053.01
 HARNESS HIGH AMP,
 CBS-1152 XV+

1104.00081.01
 TANK ASSEMBLY, CBS-1152 XV+
 2 x 5kW/240VAC

E115294 & E115294M
 (IDENTICAL TO 1101.00339.00 EXCEPT AS NOTED)

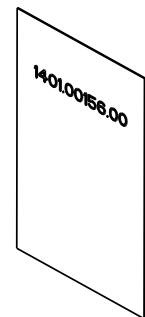
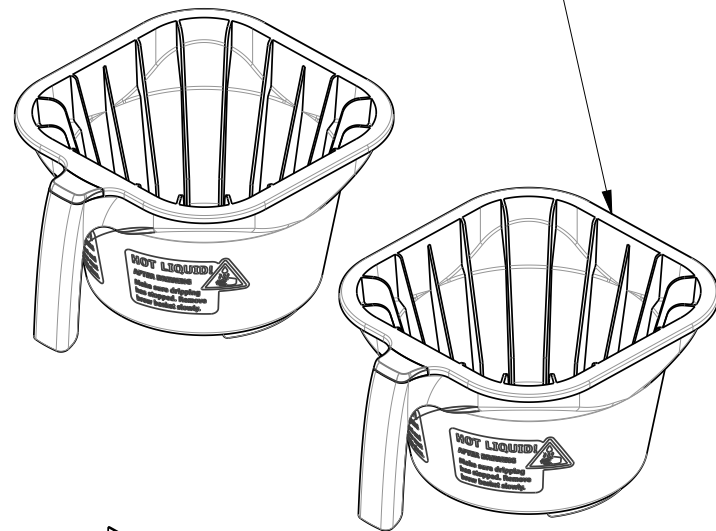
| TOLERANCES | | FETCO® FOOD EQUIPMENT TECHNOLOGIES COMPANY | |
|----------------------------|--|--|------------------|
| UNLESS OTHERWISE SPECIFIED | | 600 ROSE ROAD, LAKE ZURICH, IL 60047, USA | |
| ALL DIMENSIONS IN INCHES | | PHONE: (800) 338-2699 FAX: (847) 719-3001 | |
| ALL DECIMAL ± .005" | | E-MAIL: engineering@fetco.com www.fetco.com | |
| ANGULAR ± 1/2° | | DRAWING NAME: CBS-1152 XV+, 1Ph, 2IG, 2 X 5.0kW/240VAC, 200-240VAC, INTL | |
| THIRD-ANGLE | | CREATED BY: DK | DATE: 07/18/2016 |
| DRAWING BY: DK | | DRAWING NO. E115294 | |
| APP'D BY: AG | | SCALE: 0.188 | |
| MATERIAL: N/A | | SHEETS: 12 of 13 | |
| GAUGE: N/A | | REVISION: A | |
| FINISH: N/A | | | |

PROPRIETARY AND CONFIDENTIAL.
 THE INFORMATION CONTAINED IN THIS DRAWING IS THE SOLE PROPERTY OF FETCO.
 ANY REPRODUCTION IN PART OR AS A WHOLE WITHOUT THE WRITTEN PERMISSION OF FETCO IS PROHIBITED.

| REVISIONS | | | | |
|-----------|------------|--------|-------------|-----|
| REV | DATE | ECO NO | DESCRIPTION | BY: |
| A | 07/18/2016 | N/A | ORIGINAL | DK |

A

SKU # E115296 - 2X B015280BN2 (BROWN PLUG)
 SKU # E115296M - 2X B002282B1 (BLACK HANDLE)
 BB ASSEMBLY, 16" x 6", Ø.280" HOLE



1401.00156.00
 WIRING, CBS-1152 XV+
 L1, L2, L3, N+GND, 3 HEATERS, EXPORT

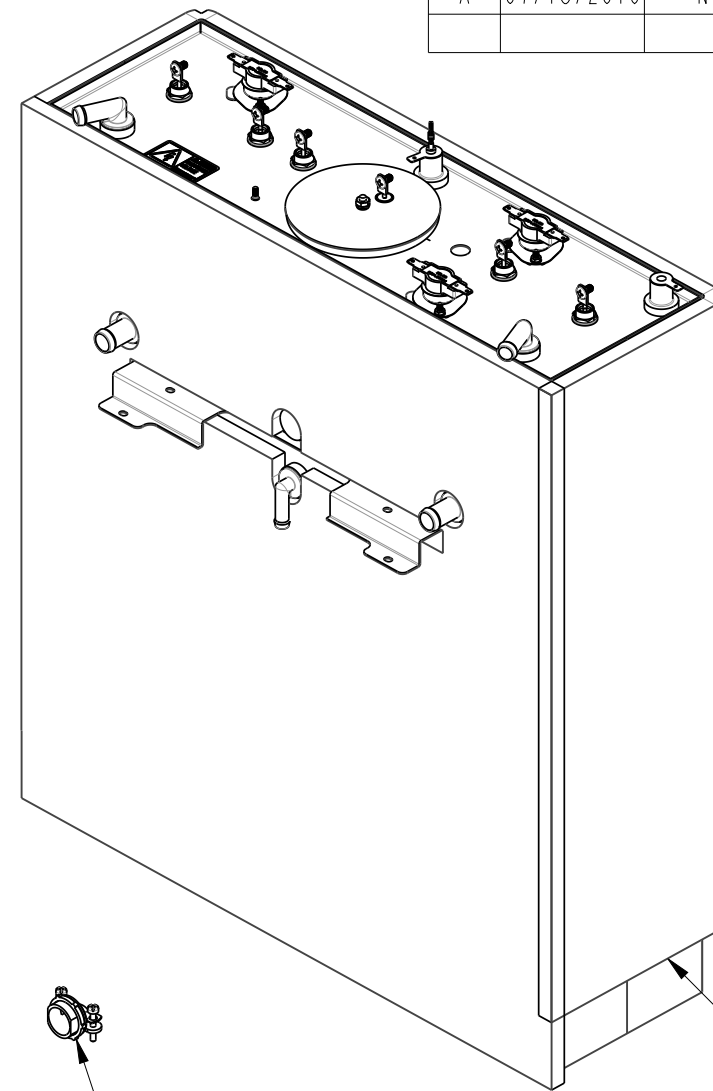
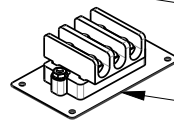
3X 1073.00007.00
 LEG, FLANGE FOOT,
 4" HIGH



4X 1084.00012.00
 #6-32 HEX NUT

4X 1083.00009.00
 #6 INT. TOOTH WASHER

1102.00284.00
 ASSEMBLY, TERMINAL BRACKET



1086.00008.00
 CONNECTOR CLAMP

1104.00075.01
 TANK ASSEMBLY, CBS-1152 XV+
 3 x 4kW/240VAC

1402.00052.01
 HARNESS HIGH AMP CE,
 CBS-1152 XV+



E115296 & E115296M
 (IDENTICAL TO 1101.00339.00 EXCEPT AS NOTED)

| TOLERANCES | | FETCO® FOOD EQUIPMENT TECHNOLOGIES COMPANY | |
|----------------------------|----------------|--|---------------------|
| UNLESS OTHERWISE SPECIFIED | | 600 ROSE ROAD, LAKE ZURICH, IL 60047, USA | |
| ALL DIMENSIONS IN INCHES | | PHONE: (800) 338-2699 FAX: (847) 719-3001 | |
| ALL DECIMAL ± .005" | | E-MAIL: engineering@fetco.com www.fetco.com | |
| ANGULAR ± 1/2° | | DRAWING NAME: CBS-1152 XV+, 3Ph, 4-G, 3 X 4.0kW/240VAC, 240/415VAC, INTL | |
| THIRD-ANGLE | CREATED BY: DK | DATE: 07/18/2016 | DRAWING NO. E115296 |
| ⊕ | DRAWING BY: DK | SCALE: 0.188 | REVISION A |
| ⊕ | APP'D BY: AG | SHEETS: 13 of 13 | |
| MATERIAL: N/A | GAUGE: N/A | FINISH: N/A | |