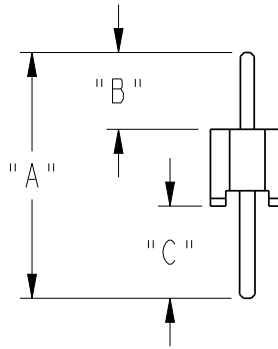
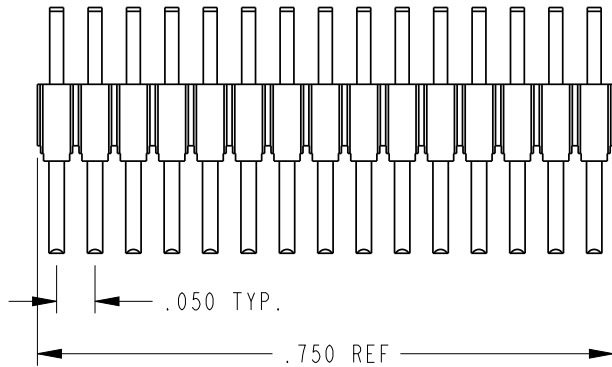


NOTES:

1. CHANGE OF MATERIAL IS NOT PERMITTED UNLESS APPROVED IN WRITING BY FETCO ENGINEERING PERSONNEL.
2. DRAWING TO BE INTERPRETED IN ACCORDANCE WITH THE CURRENT REVISION OF ASME Y14.5M.
3. TSI TO BE INTERPRETED AS THEORETICAL SHARP INTERSECTION.
4. PARTS SHALL BE FREE OF ALL CONTAMINANTS INCLUDING GREASE, DIRT, MACHINING OIL AND OTHER CONTAMINANTS.
5. PARTS SHALL BE PACKAGED IN A MANNER TO PREVENT SCRATCHING, BOWING OR OTHER DAMAGE DURING SHIPMENT.
6. PURCHASED FROM: SAMTEC  
VENDOR P/N: TMS-115-02-L-S



REVISIONS

REV	DATE	ECO NO	DESCRIPTION	BY:	<b>B</b>
A	08/17/2016	N/A	ORIGINAL	DK	
B	8/17/2017	N/A	REVISED DATA TABLE	E.FORONDA	

DATA TABLE

LEAD STYLE	DIM. "A"	DIM. "B"	DIM. "C"
TMS-02	.320 (8,13)	.100 (2,54)	.120 (3,05)



MANUFACTURING SPECIFICATIONS:  
PLATING: Au OR Sn OVER 50μ" (1,27μm) Ni

PROPRIETARY AND CONFIDENTIAL.  
THE INFORMATION CONTAINED IN THIS DRAWING IS THE SOLE PROPERTY OF FETCO.  
ANY REPRODUCTION IN PART OR AS A WHOLE WITHOUT THE WRITTEN PERMISSION OF FETCO IS PROHIBITED.

TOLERANCES UNLESS OTHERWISE SPECIFIED		<b>FETCO</b> ® FOOD EQUIPMENT TECHNOLOGIES COMPANY 600 ROSE ROAD, LAKE ZURICH, IL 60047, USA PHONE: (800) 338-2699 FAX: (847) 719-3001 E-MAIL: engineering@fetco.com www.fetco.com	
ALL DIMENSIONS IN INCHES		DRAWING NAME: <b>CONNECTOR, DISPLAY</b>	
ALL DECIMAL ± .005" ANGULAR ± 1/2°	CREATED BY: DK	DATE 08/17/2016	DRAWING NO <b>1065.00012.00</b>
	DRAWING BY: E.FORONDA	SCALE 4.000	REVISION <b>B</b>
THIRD-ANGLE 	APP'D BY: AG	SHEETS 1 of 1	
MATERIAL SEE NOTE 6	GAUGE N/A	FINISH N/A	